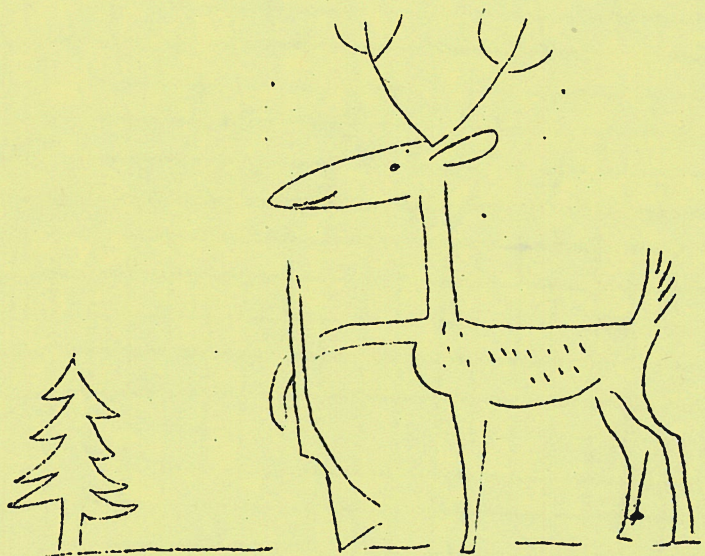
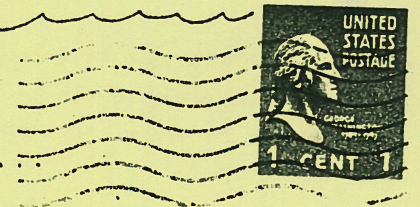
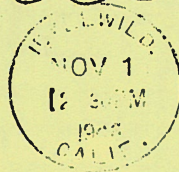


EXTRA!

\* DEER SHOTS  
MAN!



\* RUMOR - BUT LOOK  
INSIDE -



TO BOX HOLDER  
IDYLLWILD  
CALIF



# Town Crier

NOVEMBER 1, 1946

VOL. 1 - No. 1

• NOVEMBER 4th IS THE DATE •

NOMINEES FOR BOARD OF TRUSTEES

November 4th is the date of our next Chamber of Commerce meeting. The main business of the evening is the election of six new members to the Board of Trustees. For the first time, representatives from Pine Cove and Mountain Center will be chosen.

From all indications, this meeting should be of a lively nature. The agenda is packed with interesting items for the membership to tackle. It seems that when the summer trade has disappeared down the hill, the whole community takes on new life. The golden oak leaves and the frost upon the ground is the signal for the Chamber to open its attack upon the many problems and projects for the 1946-47 season.

For those persons who may not be too familiar with the Idyllwild Chamber of Commerce, the TOWN CRIER offers this brief resume. In actual number of members, we are the largest Chamber in Riverside Co. Actually, we are more like a "town meeting". Instead of representing only the commercial interests, our organization is composed of townsfolk. Merchants, tavernkeepers, carpenters, stonemasons, artists, housewives and loggers all meet to discuss our common problems. It is the hope of the Chamber to have every activity of the hill represented at the meetings and our presence will help to make this a reality.

The November 4th meeting will be held at the Idyllwild Inn, at 7:30 P.M. sharp. Let's see you there.



From Pine Cove  
D.H. BARDWELL -  
Owner of Pine Crest cabins.

PAUL KEMP -  
Owner of Lookout Cafe

From Mountain Center

AGNES WASSELL - Housewife

From Idyllwild  
(4 to be elected)

HUB M. BAIRD - Accountant

MORT BOSS - Manager San Jacinto Mt. Lumber Yard.

TED C. BUCK - Owner T n' T ranch  
Breeder of Arabian horses

R.B. HATCH -  
Ranger-San Jacinto State Park

ROLLIN HUMBER - Fern Valley Realtor

HELEN JAYNES -  
Co-owner Desert Sun School

ERNEST MAXWELL -  
Cartoonist - Illustrator

C.T. ROBERTS -  
Freight and Hauling Service

CHARLES STEVENS -  
Owner Woodland Craft Shop

Additional nominations may be made from the floor.

Reports persist that there is a native maple tree in this area. Also, that bears still linger in the San Jacinto Mts. The TOWN CRIER offers a fine bag of pine cones to anyone verifying these reports. Two maple leaves or a bear skin will do.



The TOWN CRIER is published semi-occasionally.

Editors: Betty and Ernest Maxwell. Our policy is flexible but alert to those ideas and projects which forward the development of this community. We feel that the Mount San Jacinto area is one of the choicest spots in Southern California. We'd like to keep it that way. Maybe we can help by putting out the TOWN CRIER for our friends and neighbors on the mountain.

\* \* \* \* \*

#### FOREST SERVICE CUT

Because of the drastic cut in Forest Service funds, our local station will be limited to three men this winter. Only one pumper will remain in Idyllwild.

This Congressional action means that much of the beetle control, trail work and recreational maintenance will have to be abandoned. A crew of 18 men will circulate throughout the entire San Bernardino area during the winter. They will spend a limited time in each section, doing only the essential winter chores. Two men from the Idyllwild summer crews will serve on this unit.

It is sometimes difficult for persons in non-mountain areas to appreciate the work of the Forest Service. The rangers' work is far-reaching in its scope. Almost everything they do looks ahead to the next generation. The protected forests of yesterday are the ones we enjoy today. Tomorrow's trees are those the U.S. Forest Service plants today.

It seems short-sighted of those of our lawmakers who fail to realize the important contribution of the Forest Service in the preservation and development of our natural resources.

#### GHOSTS AT PLAY!

The teachers and students of the Idyllwild Grammar school entertained at a Halloween party on October 31st. Guests were invited, at their own risk, to endure the rigors of the Spook House and then watch a parade of ghosts, goblins, devils, Indians and Scarlett O'hara's. Jimmy Davis, Linda Allen, Michael Allen and Gary Sanderson won prizes for the best costumes. There was a Straw and Bean race, a Marshmallow race and Musical Chairs. Refreshments of popcorn balls, cookies and punch topped off a very exciting party.

#### ELECTRICAL IMPULSE

According to Glenn Froehlich, local representative of the Light and Power people, Idyllwilders are using more electricity this October than ever before. Meter readings for the month indicate 150% increase over October of last year. It is also greater than in any single month in the summer of 1945. Glenn claims that this is due to the greater number of families permanently living in the mountain area.

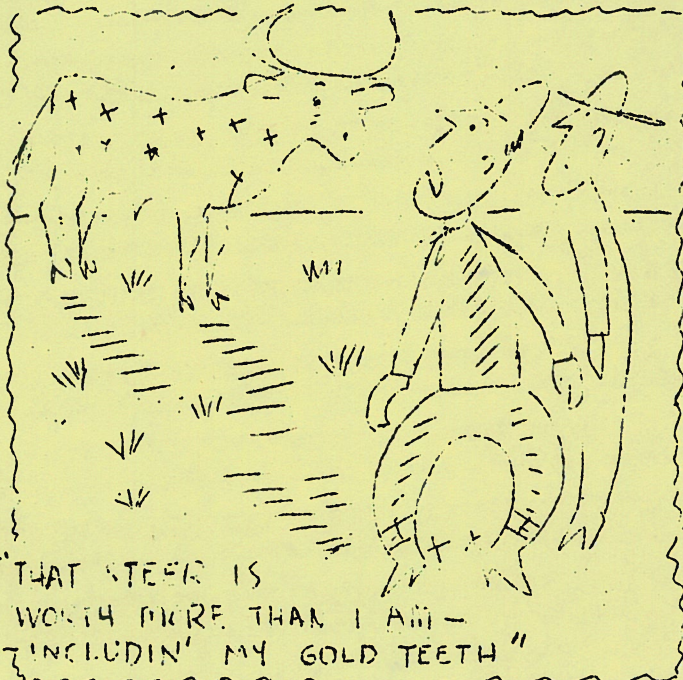
The new substation will be ready for the final hook-up in about ten days. This will provide the area with a better all-round service.

\* \* \* \* \*

The E.H. Kincaids have bought the Cole house nearing completion on the corner of River Drive. Mr. Kincaid has applied for his state nursery license and expects to be able to serve you after the first of the year. He will specialize in varieties of trees, shrubs and wild flowers native to this mountain region.

#### WINTER INDOOR SPORTS

It looks as though the winter ahead will bring us our share of fun and frolic! Besides the several shows and entertainments planned by the Entertainment Committee of the Chamber, there will be other regular hi-spots. The Rustic Theatre will be open Friday to Monday each week presenting two different bills. Fern Valley Lodge will continue to have its special events and the new Idyllwild Innkeepers plan to have weekly get-togethers for the townsfolk. Sounds good, doesn't it?





## SEASONAL NOTE

The Hallowe'en holiday was duly observed with parties that brought the townsfolk out in force.

Wednesday night saw an evening of dancing and an informal get-together at the Idyllwild Inn and if the party was a forerunner of other good times there, we're all for it. A costume dinner-dance was the attraction at Fern Valley Lodge on Thursday night and some hilarious and priginal get-ups were seen in the masquerade line-up.

Local pranks were at a minimum. Of course, if you have your own A few soaped windows were the on-chickens, cows, rabbits, pigs, deer ly testament to night-working witchesr squab, you can ignore those fig- Perhaps the watchfulness of Mike lures -- at least, for the moment.

Don't forget that on Tuesday, November 5th, the polls are open for all voters. The Idyllwild Inn is the place to do your ballot stamping.

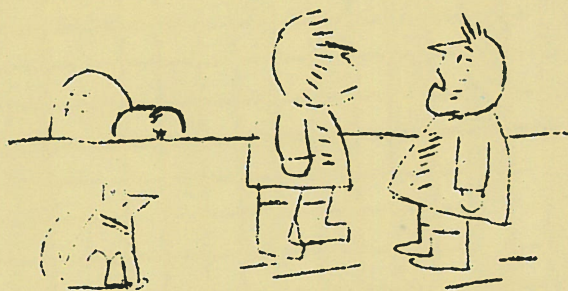
Since our government is run by the persons whom we select, let's have a good turnout for the mountain area. If you vote, you have earned your right to participate - if you don't vote, be careful how you object to the way the government operates.

## SNOW SCENE

## MOUNTAIN VIEWS

We're happy to see Gay Humber back in circulation again. Those fuzzy ear muffs of his remind us that snow-time is somewhere around the corner...Our faithful lookout, "Pete", is down from the peak. He picked up two blisters on the hike down.....Sorry to hear of Oscar Trotta's accident in Oklahoma..... TOWN CRIER plans to carry a swap column in the next issue. Our rates are reasonable.

Our financial expert has gone into a huddle and come up with some strange figures about costs. Wholesale prices as of the week of October 14th showed that commodities were up 7.2 % over the previous week. This is 28% above wholesale prices of a year ago - or 59% above the 1937 level. Wholesale meat prices jumped 25 % above the previous week's scale. General food prices were 66 % above those of October 1945.



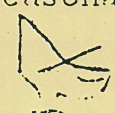
"IT LOOKS LIKE A COLD WINTER"

That shivering you were doing Tuesday and Wednesday nights was on the up and up. Forestry Service thermometers registered a minimum of 21 and 24 degrees. Better fetch out the red flannels!

\* \* \* \*

If you would welcome the ring of the TOWN CRIER'S bell in future issues, let us hear from you. We'd like to have your suggestions. Address Box 49, Idyllwild.

In case you're interested, experts predict 10 million people in So. Calif. by 1952. Nobody seems to know just where they all will go. \*\*\*\*\*The Pontas boys were rather unusual womenfolk in their Hallowe'en costumes. \*\*\*\*Jess and Brown have just completed a mammoth sign down on the desert. It was 40 feet long.\*\*\*Bob Hatch has several dozen ground squirrels in the Park. He'll trade them for one good pair of Army boots. Want to kick in? \*\*\*\*\*TOWN CRIER weather forecast for Idyllwild...Warm, chilly, p-co-la.

\$  SWAN \$