

See page 18.



**News bites**

**Propane prices**

Assemblyman Nestande hears citizen concerns. See page 9.

**School elections**

3 HUSD candidates speak to TC readers. See page 10.

**Peter vs. Wolf**

Harry Shearer has breaking news version. See page 12.

**Living Free**

30th Anniversary on Oct. 16. See page 15.

**Golf**

Jack Clark's saga of the Soboba Classic. See page 16.

**Idyllwild Chamber**

Moving forward and growing. See page 22.

**Inside**

A&E ..... 11  
 CALENDAR ..... 5  
 CHURCHES ..... 8  
 CLASSIFIEDS ..... 23  
 CROSSWORD ..... 25  
 HOROSCOPE ..... 25  
 LODGING ..... 8  
 MASTHEAD ..... 6  
 ON THE TOWN ..... 11  
 PUBLIC NOTICES ..... 26  
 REAL ESTATE ..... 18  
 SERVICES ..... 28  
 SPORTS ..... 16  
 SUDOKU ..... 25  
 WEATHER ..... 2

**In an EMERGENCY go to towncrier.com for news!**



POSTMASTER: Dated material, please deliver Oct. 6-8, 2010

**Idyllwild Town Crier**



Covering the San Jacinto and Santa Rosa Mountains from Twin Pines to Anza to Pinyon  
 ALMOST ALL THE NEWS — PART OF THE TIME

VOL. 65 NO. 40

75¢ (Tax Included)

IDYLLWILD, CA

THURS., OCTOBER 7, 2010



Lingering rain clouds from Saturday's storm are reflected in the puddles on the Village Centre's lawn. (See story on page 8.) PHOTO BY CID CASTILLO

**Edison installs smart meters**

BY MARSHALL SMITH  
 STAFF REPORTER

From September through November, Southern California Edison (SCE) will be replacing existing meters in Idyllwild with Edison Smart-Connect (Smart) two-way communicating meters. The new meters have the capability to transmit daily household energy usage data to customers' SCE website sign-in page.

Smart meters allow SCE customers to monitor energy consumption and costs online in hourly increments for residential customers and 15-minute segments for business customers. With these data, customers can save energy and money by shifting electricity use to off-peak hours such as evenings

and weekends.

According to SCE, smart meters will quickly identify system outages and, in many cases, resolve them remotely.

Ken Devore, director of SCE's smart meter project, advised that the meters' two-way communication feature will not be operable immediately after installation. It will come online over a six-month period ending mid-year 2011.

"We've been testing the software for over a year," said Devore. "We'll bring it online a bit at a time, informing customers by letter [when the customer energy-monitoring and two-way communication feature will be operable]. We spent time on the technology and we will spend similar time

See Meters, page 8

**Search for veterinarian**

BY CAREY POWERS  
 NEWS INTERN

With a sense of wholehearted humanity, many Idyllwild pet owners, including those at Animal Rescue Friends of Idyllwild (ARF) who have a strong solicitude for animals, consider their companions to be more than obedient sources of entertainment, or easy company. There is an understood love between an owner and his pet that resembles no other love and that involves unique commitment.

"We have to take the responsibility of protecting our dogs and cats," said Maria Lehman, ARF president, elaborating on the result of domestication.

Part of this responsibility includes ensuring quality healthcare for Idyllwild pets, which, in the past, has been a strenuous effort for many local pet owners. The lack of a veterinary clinic, or emergency and surgery facilities has posed serious problems for the Hill's pet population.

Pet owners are familiar with the long, usually over-heated, 20-mile trips down

the mountain when their pets are agitated, sick, or terrified, in order to find veterinary services elsewhere. Dr. Susan Eyer-Johnson, the mobile vet visiting ARF monthly, is much appreciated by the community, but after a dog named Sadie was put down away from home following a traumatic drive down the hill, ARF decided that something more needed to be done.

"That is not how she should've spent the last bit of her life," said Kristin Ethier, Sadie's owner. Spurred by this regrettable event, ARF

See ARF, page 21

**Assemblyman hears locals**

BY J.P. CRUMRINE  
 EDITOR

On Tuesday, Sept. 28, local Assemblyman Brian Nestande (R-CA 64) visited Idyllwild. He held a town meeting at Idyllwild School where a cozy group of about six constituents had the opportunity to have a personal conversation with the state legislator.

Topics ranged from propane pricing (see story on page 9) to the state budget; legislative leaders had

only just announced a likely agreement with Gov. Arnold Schwarzenegger.

Although Nestande did not have the details of this year's solution, he readily explained that a year ago, the 2009-10 budget solution was as permanent as a spider web.

The \$20 billion gap was solved with strands that had the life expectancy of a mere year. For example, nearly half of the \$20 billion in cuts were replaced with the use of federal stimulus

See Nestande, page 9



# NEWS OF RECORD

## Fire log

Hill fire stations responded to the following calls, Monday to Sunday, Sept. 27 to Oct. 3:

### Idyllwild Fire Department and Ambulance

**Sept. 27** — Public service assist, Maranatha Drive, Idyllwild.

**Sept. 27** — Walk-in medical aid.

**Sept. 28** — Walk-in medical aid.

**Sept. 29** — Walk-in medical aid.

**Sept. 30** — Medical aid, San Jacinto and Fern Valley roads, Idyllwild.

**Oct. 1** — Walk-in medical aid.

**Oct. 2** — Medical aid, Village Center Drive, Idyllwild.

**Oct. 3** — Walk-in medical aid.

### Riverside County Fire, Pine Cove

**Sept. 29** — False alarm.

**Sept. 30** — Fire assist.

**Oct. 1** — Wildland fire.

**Oct. 1** — Fire menace standby, electrical.

### Riverside County Fire, Garner Valley

**Sept. 28** — Traffic collision, highways 74 and 243, Mountain Center.

**Sept. 28** — Ringing alarm, 35000 block of Pathfinder

Road, Garner Valley.

**Sept. 29** — Vegetation fire, Bautista Road, Anza.

**Sept. 30** — Vegetation fire, 49000 block of Pima Ave., Aguanga.

**Sept. 30** — Vegetation fire, 68000 block of San Carlo Drive, Pinyon.

**Oct. 1** — Vegetation fire, 39000 block of Cary Road, Anza.

**Oct. 2** — Public service assist, 56000 block of Apple Canyon Road, Garner Valley.

**Oct. 2** — Traffic collision, 33000 block of Morris Ranch Road, Garner Valley.

### Riverside County Fire, Pinyon

**Sept. 28** — Fire, Anza.

**Sept. 28** — Medical aid.

**Sept. 29** — Fire, Anza.

**Sept. 30** — Fire, Aguanga.

**Sept. 30** — Fire, Palm Springs.

**Oct. 1** — Fire, Anza.

**Oct. 1** — Fire, Anza.

### Riverside County Fire, Anza

**Sept. 27** — Medical aid, Terwilliger and Grandon roads, Anza.

**Sept. 27** — Medical aid, Highway 371 and Contreras Road, Anza.

**Sept. 28** — Traffic collision, Bautista Canyon and

Old Cary roads, Anza.

**Sept. 29** — Vegetation fire, Bautista and Cahuilla roads, Anza.

**Sept. 29** — Vegetation fire, Anza.

**Sept. 29** — Vegetation fire, Bautista Road and Highway 371, Anza.

**Sept. 30** — Cover assignment, Jamacha Road, El Cajon.

**Sept. 30** — Unknown type of fire, Western Hills Drive and Deer Mountain Road, Anza.

**Oct. 1** — Medical aid, Jack Lane and Mitchell Road, Anza.

**Oct. 1** — Vegetation fire, Highway 371 and Cary Road, Anza.

**Oct. 1** — Traffic collision, Wellman and Kirby roads, Anza.

**Oct. 2** — Public service assist, Jay Dee Lane and La Cima Road, Anza.

**Oct. 2** — Medical aid, Highway 371 and Lake Riverside Drive, Anza.

**Oct. 2** — Medical aid, Highway 371 and Lake Riverside Drive, Anza.

**Oct. 2** — Medical aid, Highway 371 and Lake Riverside Drive, Anza.

**Oct. 2** — Medical aid, Mitchell and Bohlen roads, Anza.

**Oct. 3** — Medical aid, Fisher Road and Glenda Lane, Anza.

**Oct. 3.** — Medical aid, Trails End and Terwilliger Road, Anza.

## CHP log

The resident post of the California Highway Patrol responded to the following call from Monday to Sunday, Sept. 27 to Oct. 3. This may not be a complete list of responses:

**Sept. 30** — Single-vehicle, noninjury traffic collision, Highway 74 east of Strawberry Creek.

## Sheriff's log

The Lake Hemet Sub-division of the Riverside County Sheriff's Department responded to the following calls from Friday, Oct. 1 to Tuesday, Oct. 5. This may not be a complete list of responses:

**Oct. 1** — An unknown suspect committed a felony check forgery in the 58700 block of Meyers Lane in Anza. The case remains open but suspended.

*All people identified here are presumed innocent of these preliminary charges pending court actions. Only the names of suspects charged with felonies will be printed.*



**Irving**, a handsome boxer, belonging to **Lauren Devore** of *B's Mountain of Books*, was injured when he was attacked last week by an unleashed dog. Irving was initially treated at an emergency room in Murrieta. Two subsequent visits to the Anza vet were needed because of an infection of the throat, neck, head and ears from the bites. PHOTO BY CID CASTILLO

Vist [www.towncrier.com](http://www.towncrier.com) for up-to-date local breaking news

**Roby Gray Construction Co.**

General Contractor  
Fine Home Building • Remodels  
Decks • Additions • Doors • Windows

**(951) 659-3307**

P.O. Box 3227  
Idyllwild, GA 92549  
SLB 586585  
Est. 1990

## Idyllwild Weather

From the National Weather Service

Thursday 10/7	Friday 10/8	Saturday 10/9	Sunday 10/10	Monday 10/11
<b>55/39</b> 20-percent chance of rain.	<b>70/46</b> Mostly sunny.	<b>72/48</b> Mostly sunny.	<b>74/48</b> Mostly sunny.	<b>72/46</b> Mostly sunny.

Idyllwild this year					Idyllwild last year				
Date	High	Low	M	S	High	Low	M	S	
9-27	88	56			89	41			
9-28	85	55			81	51			
9-29	na	na			81	48			
9-30	85	55	.13		72	41			
10-1	78	34	.87		74	40			
10-2	74	50	.60		76	43			
10-3	75	48			68	42			

Moisture in inches		Snow in inches	
To date this season (Idy):	1.70	To date this season (Idy):	0
To date last season (Idy):	.29	To date last season (Idy):	0
Total last season (Idy):	23.61	Total last season (Idy):	35.91
To date this season (PC):	1.40	To date this season (PC):	0
Total last season (PC):	30.92	Total last season (PC):	72.5

**TEMPERATURES AND 24-HOUR** moisture and snow totals for Idyllwild are recorded daily at 4 p.m. at the Idyllwild Fire Station. Pine Cove totals are measured by resident George Tate also at 4 p.m. Moisture inches include all precipitation such as rain, melted hail and melted snow.

Weather season is July 1 to June 30. For Hill road conditions and Hill weather, visit the Internet at <http://www.towncrier.com> or call Caltrans road update at 1-800-427-7623.

## Idyllwild, we're here for you!

2011 SUBARU  
**OUTBACK**  
2.5i Premium Package

\$26,657

As low as **3.9% interest** for 72 months on approved credit

2010 SUBARU  
**LEGACY**  
2.5i Premium Package

\$22,960

As low as **2.9% interest** for 63 months on approved credit

2010 SUBARU  
**IMPREZA**  
2.5i Premium Package

\$18,845

As low as **0% interest** for 48 months on approved credit

- All-Wheel Drive standard
- 4-wheel disc brakes with ABS
- 6 standard airbags
- 170-hp Subaru Boxer engine
- All-weather package

Stock #: 207231  
Vin #: 241656  
Model #: AAD

- All-Wheel Drive standard
- 4-wheel disc brakes with ABS
- 6 standard airbags
- 170-hp Subaru Boxer engine
- All-weather package

Stock #: 217013  
Vin #: 319299  
Model #: BDD

- All-Wheel Drive standard
- 4-wheel disc brakes with ABS
- 6 standard airbags
- 170-hp Subaru Boxer engine
- All-weather package

Stock #: 207106  
Vin #: 508691  
Model #: AJD

\*Tax, title, license and registration fees not included. Available through October 31, 2010.

[www.palmspringssubaru.com](http://www.palmspringssubaru.com)



# OUTSIDE IDYLLWILD

By BRUCE WATTS

## Mark Twain said it best

"A banker is a fellow who lends you his umbrella when the sun is shining and wants it back the minute it begins to rain," said Mark Twain.



The above quote has been unofficially attributed to Mark Twain but, like many of his quotes, it is filled with both truth and a deep understanding of human nature. Although I have read many of Mark Twain's books, I am more fascinated with the man himself than with his literary works.

Because of Samuel Clemens' unique insights into human nature, I have learned to laugh at myself as well as at other humans. To me, the only other author that comes close to Twain's humorous observations about human nature is Kurt Vonnegut. At any rate, I find a sense of humor very important when dealing with the public, who ask some very interesting questions at the shop.

As anyone that was on the hill this past weekend knows, we had some major thunder showers on Friday and Saturday. In fact, the two days were almost a carbon copy of each other with the downpours beginning at around 2 p.m. and continuing for more than an hour.

On Saturday, while purchasing a rain jacket, a gentleman asked me if he could bring it back if he didn't wear it in the rain. After thinking it over for a split second, I gave him my one word answer: "No".

One of the things I dislike doing is trying to talk people out of doing things that may put them in jeopardy. Things like climbing Tahquitz on a day when lightning and rain are imminent. Sometimes, simple logic does not dissuade them from taking the risk of climbing a long route such as "Whodunit," so I hit them with a line I heard from Clark Jacobs.



The California fuchsia (*Epilobium canum* aka *Zauschneria californica*) requires no summer water and is highly attractive to hummingbirds. California fuchsia, a western native, looks best in late summer and fall when so few natives are blooming. It spreads by roots, so allow room or keep it contained.



Sticky cinquefoil (*Potentilla glandulosa*) occurs from Alberta to British Columbia in the north; south to California, Arizona, New Mexico, and northern Baja California; and east to South Dakota. Cinquefoil will grow one to two feet tall with creamy, yellow flowers. It is a leafy plant with several stems, often reddish and sticky with minute, glandular hairs, topped by yellow flowers in loose, branched clusters.

PHOTOS COURTESY OF HAROLD VOORHEIS

Clark tells them that if rain catches them, they will have to rappel off the climb, which means leaving lots of valuable gear behind. This bit of logic usually does the trick.

Another easy question to answer came from a customer who found a pair of pants on the sale rack. He brought the pants inside and went into his spiel about supporting the little shops like ours and how he wanted to shop at my store if and only if I would give him the pants at a price below wholesale. This time I just chuckled a little and he knew he had his answer.

Sometimes, people do listen to my advice. On Sat-

urday, I advised two young climbers to go to Suicide Rock, do shorter routes and try and be done by 2 p.m. They had just finished up and just like clockwork the thunder showers came at 1:57 p.m.

Of course, when it comes to the weather, I sometimes get it wrong. Like everyone else, including the national and local forecasters, I tend to err on the side of caution. But that is just me. Although it did not rain on Sunday, I was still telling people to be prepared.

Finally, another quote by Mr. Clemens: "Everybody talks about the weather but nobody does anything about it." At least, I try to factor in the weather when I give advice.

*"Metropolitan close ... feels like a million miles away"*



Larry Bischof



### PICTURE PERFECT

Pride of ownership. Featured in the Harvest Home Tour and Garden Tour. Remodeled. Wood paneling in Living Room w/open beam ceiling & brick Fireplace. Three Bedrooms, Office, Breakfast Nook & formal Dining. Wrap around decks. Lush landscaping w/pond. 2-car garage with private Office. **\$429,000**

### FREEDOM

4.5-Acre Log Home Estate. Beautiful valley views. Soaring ceiling in Living Room w/ raised River Rock Fireplace. Gourmet Kitchen w/granite counters. Three Bedrooms + Master w/private deck. Paved driveway. 6 car carport plus workshop. Detached Dog Kennel & grooming enclosure. U.S. Forest close. **\$625,000**



*Dreams of Creeks and Logs*



### HIDEAWAY

Log cabin stirs memories of yesteryear. Covered front porch. Open floor plan, River Rock Hearth. Homesteader Kitchen, Office/Den area. Master Bedroom + Guest Bedroom. 2 Baths. Spacious back porch, fenced yard, pine forest views. **\$219,000**



### ON STRAWBERRY CREEK

Fern Valley babbling creekside setting amid towering pines and cedars with Lily Rock views. Spacious family home. Inviting Living Room includes River Rock hearth and vaulted ceiling. Large formal Dining opens to Kitchen. 3 Bedrooms, 2 Full Baths. Partially fenced for pets. Decks front and back. **\$369,000**

### EXCELLENCE IN LOGS

2 Homes. 36' x 48' R.V. Garage/ Workshop. Over 3 acres. Horse legal. Finely crafted log home w/3-car Garage. Prow-shaped Living Room w/cathedral ceilings; River Rock Hearth. Country Kitchen. Master + 2 Bdrms. & Den. 2nd Home offers vaulted ceilings, fireplace, Formal Dining and roomy Kitch. 3 + Bdrms. Spacious decks. **\$649,000**





## CLUBS

### High Country Garden Club

**Paul Elmore** of Elmore's Saw and Welding in Anza will speak at the next meeting of the **High Country Garden Club** at 12:30 p.m. Saturday, Oct. 9 at Lizzie Ann's Garden Center.

The presentation entitled "Winterize your Whacker" is not limited to weed-whackers. Elmore will explain the "do's and don't's" of long term storage of small engine and power tools (such as chainsaws, chippers and mowers). Elmore will also speak on what to look out for when buying used equipment.

For more information, contact **Annika Knoppel**, garden club leader, at (888) 834-9005, ext. 5, or hcgardenclub@gmail.com.

### Democrats

**Scott** and **Kathy Bloom-Rudibaugh** will lead a discussion on the Propositions that are on the Nov. 2 Ballot at the next meeting of the **Democrats of Hemet-San Jacinto** at 6:15 p.m. Tuesday, Oct. 12 at 530 1/2 E. Florida Ave. in Hemet. Refreshments will follow the meeting.

For more information, contact **Hal Spangenberg** at hspangenberg@msn.com or (951) 487-0325.

### Women's Guild

**Chris Rockwell** will speak about his service of feeding the homeless at the next **Women's Guild** of the **Idyllwild Community Presbyterian Church** meeting Wednesday, Oct. 13.

The group meets in the church's **Fellowship Hall** for lunch at noon and the speaker begins at 1 p.m. Lunch costs \$4. All women on the Hill are invited.

For more information, call **Linda Young** at 659-9603.

To get a listing in "Clubs," visit [www.towncrier.com](http://www.towncrier.com), click on "News" in the menu at the top and click on "Submit a news item," or stop by and fill out a news form.



The Prairie Dove's **Phyllis Currington-Brown**, seen in the foreground holding **Dawson**, is the latest merchant to join the Idyllwild Chamber of Commerce. Also celebrating the occasion is, left to right, **Nick Todd**, board member, **Bill Sheppard** from Showtime Video, with **Debbie Sheppard**, Sales Associate at the Prairie Dove. **Gerry High**, background, owner of Artspresso Gallery, **Billy Sheppard** holding **Pixel** and chamber board member **Lauren Devore**, B's Mountain of Books.

PHOTO BY CID CASTILLO



**TOTAL**  
AUTO BODY & FRAME SHOPPE

**FREE**  
Estimates

**For Your Total Auto Body Needs**  
**Foreign and Domestic**  
Mon.-Fri. 7a.m.-5p.m.  
Corner of Menlo & Buena Vista  
491 East Menlo • Hemet

**(951) 929-9565 • Steve & Jana Desrocher**

## ONLY IN IDYLLWILD

Only in Idyllwild can you walk onto the property of a fine restaurant and enjoy looking at the vegetable garden planted and cared for by the owner. If you look carefully, you may see the resident rabbit!

Corrinne Brown  
Idyllwild

"Only in Idyllwild" may be sent one of four ways: e-mail to [beth@towncrier.com](mailto:beth@towncrier.com), call 659-2145, Ext. 17, fax to 659-2071 or drop off at the office, 54295 Village Center Drive.



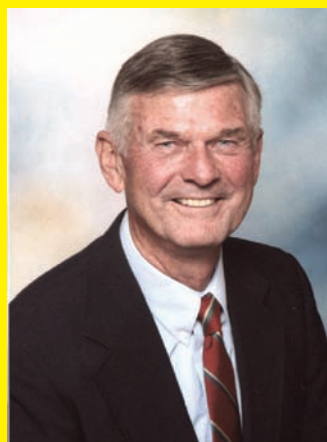
**Kathy Anderson**, regional marketing representative for the California Travel and Tourism Commission, addressed the Idyllwild Business Roundtable at its recent meeting. Anderson suggested many ways that Idyllwild could market itself in state tourism booklets, brochures and online.

PHOTO BY MARSHALL SMITH

## ROSS VALENZUELA

### Hemet Teachers' School Board Picks

The Hemet Teachers' Association is pleased to endorse Paul Bakkom, Ross Valenzuela and Joe Wojcik for the Hemet School Board. Hemet's teachers trust that these three candidates' familiarity with the Hemet District, open-mindedness, and commitment to improving student achievement will serve our community well.



**Paul Bakkom**  
Retired teacher



**Joe Wojcik**  
Parent/Attorney



**Ross Valenzuela**  
Retired librarian/  
teacher

- Safe, secure schools
- Sound financial management
- Improved vocational education
- Recruitment of highest quality teachers
- Budget cuts kept away from classroom

**Bakkom • Wojcik • Valenzuela**

Paid for by Political Action Group for Education — Hemet Teachers' Association



# COMMUNITY CALENDAR

For the Idyllwild Arts & Entertainment Calendar, see "On the Town," on page 11.

## WEDNESDAY, OCT. 6

- Idyllwild Rotary Club, 7:30-9 a.m. American Legion Post 800, 54360 Marion View Dr.
- Town Crier News Meeting, public welcome, 8:30 a.m. Café Aroma, 54750 North Circle Dr.
- Creekside Writers, 9 a.m.-noon. Call 659-2844.
- Garner Valley Women's Club, 10:30 a.m. Garner Valley Common, 61600 Devil's Ladder Rd.
- Alcoholics Anonymous, noon. St. Hugh's Episcopal Church, 25525 Tahquitz Dr.; 6 p.m., Spiritual Living Center, women only, 26120 Ridgeview Dr. (the Courtyard building)
- Awareness Meditation Group, 5-5:30 p.m. Spirit Mountain Retreat, 25661 Oakwood St. Call 659-2523.
- AWANA for ages 3 to fifth-graders, 5:45-8 p.m. Idyllwild Bible Church, 54400 Pine Crest Ave.
- Codependents Anonymous meeting, 7:30 p.m. Spiritual Living Center, Church of Religious Science, 26120 Ridgeview Dr. (the Courtyard Building)

## THURSDAY, OCT. 7

- "Forgotten God," Women's Ministry Bible Study, 10 a.m.-noon. Chapel in the Pines Church Office, 29430 Hwy. 243, Mountain Center.
- Fit After Fifty, 11 a.m. Mile-High Fitness, 54423 Village Center Dr.
- Alcoholics Anonymous, noon. St. Hugh's Episcopal Church, 25525 Tahquitz Dr.
- Soroptimist International business meeting, 5:30 p.m. Arriba Mexican Restaurant, 55980 Highway 243. Call Karen Doshier, 659-0790.
- ESL classes, 6-8 p.m. Idyllwild School, 26700 Hwy. 243.
- Narcotics Anonymous, 7:30 p.m. Spiritual Living Center, Church of Religious Science, 26120 Ridgeview Dr. (the Courtyard Building)

## FRIDAY, OCT. 8

- Baby Play Group, 10:30 a.m. Call Debbi Geisinger, 659-8710 or (951) 966-1094.
- Alcoholics Anonymous, noon. St. Hugh's Episcopal Church, 25525 Tahquitz Dr.; Pick-a-stick candlelight, 7:30 p.m. Idyllwild Community Presbyterian Church, Manse Alcove, Fellowship Hall, 54400 North Circle Dr.
- Celebrate Recovery, Christ-centered 12-Step program. BBQ 6-7 p.m.; Open Share meeting 7-9 p.m. Former Morning Sky School, 29375 Hwy. 243, Mountain Center. Child care available. Call 659-0097 for information.

## SATURDAY, OCT. 9

- Stand in Silent Vigil for Peace, Justice and Nonviolence, noon. Town center. Call 659-2718.
- Alcoholics Anonymous, noon. St. Hugh's Episcopal Church, 25525 Tahquitz Dr.; 7:30 p.m. Community Presbyterian Church, Fellowship Hall, 54400 North Circle Dr.

## SUNDAY, OCT. 10

- Zen Meditation Group, 8 a.m. Call 659-2253.
- Peace Meditation Practice, 10 a.m. Tibetan Buddhist Dharma Center, 53191 Mountain View, Pine Cove.
- Teen Group, 10-11:30 a.m. Spiritual Living Center, Church of Religious Science, 26120 Ridgeview Dr. (the Courtyard Building)
- Alcoholics Anonymous, 12x12 Book Study closed meeting, noon. Idyllwild Water District, 25945 Hwy. 243; 5 p.m., Rancho Encino Mountain Club, 45915 Orchard Road, Poppet Flats, across from CalFire Station 6.
- Idyllwild Writer's Guild, 3 p.m. 25685 Big Pine St., Cedar Glen. Call 659-0130.

## MONDAY, OCT. 11

- Associates of Idyllwild Arts, 10 a.m. Wilson classroom, 52500 Temecula Dr.
- Alcoholics Anonymous, noon & 7:30 p.m. St. Hugh's Episcopal Church, 25525 Tahquitz Dr.

• Idyllwild Community Meditation, Session I: 5:30-6:30 p.m.; Session II: 6:45-8 p.m. Idyllwild Yoga Studio. Call Val at 659-5750 for information.

• Pinyon Communities Council, 7 p.m. Pinyon Fire Station, 70080 Hwy. 74, Pinyon.

## TUESDAY, OCT. 12

- Zen Meditation Group, 7 a.m. & 7 p.m. Call 659-2253.
- Mountain Quilters of Idyllwild, 9:30 a.m. Community Presbyterian Church, 54400 North Circle Dr.
- Mountain Communities Fire Safe Council public board meeting, 9:30 a.m. Mountain Resource Center, 25380 Franklin Dr. Call 659-5208 for information.
- Fit After Fifty, 11 a.m. Mile-High Fitness, 54423 Village Center Dr., Strawberry Creek Square.
- Alcoholics Anonymous, noon. St. Hugh's Episcopal Church, 25525 Tahquitz Dr.; AA Open Meeting & Big Book Study, 6-7 p.m., Spiritual Living Center, Church of Religious Science, 26120 Ridgeview Dr. (the Courtyard Building)
- La Leche League, 1 p.m. Call 659-8321.
- International Healing Rooms of Idyllwild, 5-7 p.m. Shiloh Christian Ministries, 54960 Pine Crest Ave.
- Idyllwild Fire Protection District Commission, 5:30 p.m. Idyllwild Fire Station, 54160 Pine Crest Ave.
- ESL classes, 6-8 p.m. Idyllwild School, 26700 Hwy. 243.
- Healthy Lifestyle Class, 5:30

p.m. optional weigh-in; health talk by Brenda Scherlis, 6 p.m. Silver Pines, 25955 Cedar St.

• Celebrate Recovery, Christ-centered 12-Step Study meeting, 6:30-8 p.m. Former Morning Sky School, 29375 Hwy. 243, Mountain Center. Call 659-0097 for information.

## WEDNESDAY, OCT. 13

- Idyllwild Rotary Club, 7:30-9 a.m. American Legion Post 800, 54360 Marion View Dr.
- Town Crier News Meeting, public welcome, 8:30 a.m. Pine Cove Water District building, 24917 Marion Ridge Dr.
- Creekside Writers, 9 a.m.-noon. Call 659-2844.
- Pine Cove Water District, 10 a.m. PCWD, 24917 Marion Ridge Rd., Pine Cove.
- La Leche League, 10 a.m. Call 659-8321.
- Community Church Guild, noon. Church, 54400 North Circle Dr.
- Alcoholics Anonymous, noon. St. Hugh's Episcopal Church, 25525 Tahquitz Dr.; 6 p.m., Spiritual Living Center, women only, 26120 Ridgeview Dr. (the Courtyard building)
- Awareness Meditation Group, 5-5:30 p.m. Spirit Mountain Retreat, 25661 Oakwood St. Call 659-2523.
- County Service Area 38 Advisory Committee meeting, 5:15 p.m. Mountain Resource Center, 25380 Franklin Dr.
- AWANA for ages 3 to fifth-graders, 5:45-8 p.m. Idyllwild Bible Church, 54400 Pine Crest Ave.
- Mountain Disaster Pre-

paredness board meeting, 6-7:30 p.m. Creekstone Inn, 54950 Pine Crest Ave.

• Codependents Anonymous meeting, 7:30 p.m. Spiritual Living Center, Church of Religious Science, 26120 Ridgeview Dr. (the Courtyard Building)

## COMMUNITY SERVICE HOURS

- California Department of Forestry (bark beetle issues), 8 a.m.-5 p.m. Monday-Friday. 25380 Franklin Dr., 659-3335.
- Chamber of Commerce, 54325 North Circle Dr., 12-3 p.m. Monday-Saturday. 659-3259.
- Idyllwild HELP Center, 26330 Highway 243, 9 a.m.-noon & 1-3 p.m. Tuesday-Friday. 659-2110.
- Idyllwild Area Historical Museum, 54470 North Circle

Dr., 11 a.m.-4 p.m. Saturday & Sunday. Group tours by appointment. 659-2717.

- Idyllwild Library, 54185 Pine Crest Ave., 10 a.m.-6 p.m. Monday & Friday, 11 a.m.-7 p.m. Wednesday, 10 a.m.-4 p.m. Saturday, 659-2300.
- Idyllwild Nature Center, 25225 Highway 243, 9 a.m.-4:30 p.m. Tuesday-Sunday.. 659-3850.
- Idyllwild Skate Park, Idyllwild Pines Camp, 26375 Highway 243, 2:30 p.m.-dusk Wednesday & Thursday; 1:30 p.m.-dusk Friday; noon-dusk weekends.
- Idyllwild Transfer Station, 28100 Saunders Meadow Rd, 8 a.m.-4:30 p.m. Thursday-Monday; Grinding Facility, 8 a.m.-noon & 1-4 p.m. Monday-Friday; 10 a.m.-2 p.m. Saturday.

## Opening to intuitive guidance

At Spirit Mountain Retreat on Oct. 16, professional intuitive Miriam Mousaioff will teach a 1-day workshop focusing on how to listen deeply to your spirit and the spirit of the Earth. To awaken to a new level of consciousness, Mousaioff advises the spiritual community to become more grounded by connecting deeply and making choices that are healthy. She says that deep listening begins by shifting focus inward and opening to the voice of intuition. In order to listen and trust this inner voice, she says that one must quiet the mind, connect with the body, and become more present.

The program will run from 9:30 a.m.-4 p.m. The fee is \$65 and includes lunch. Individual readings will also be available. Call 659-2523 for information.



**TAI CHI**  
Traditional Yang Style  
**NEW BEGINNERS CLASS**  
trudybaludy@yahoo.com  
www.trudylevy.net  
659-9548

**Urgent news for people who had HIP REPLACEMENT**

Several hip replacement systems used since 2003, including ones made by DePuy and Zimmer, have been recalled or had sales suspended due to an increased need for a second hip replacement. If you had or need a second hip replacement or are having unexpected hip problems, call us now for a free consultation at 1-800-THE-EAGLE (toll-free). No fees or costs until your case settles. We practice law only in Arizona, but associate with lawyers throughout the U.S.

**GOLDBERG & OSBORNE**  
1-800-THE-EAGLE  
(1-800-843-3245)  
www.1800theeagle.com

Open 7 days a week

**LUMBER • SCREEN DOORS • NAILS**

**FOREST LUMBER**  
Since 1949  
Everything you need for your home or your 2<sup>nd</sup> home

**OCTOBER BARGAINS OF THE MONTH**

**SAVE 23%**  
**4.99**  
reg. 6.49  
**100W Standard Halogen Floodlight**  
For indoor/outdoor use.  
1500 lumens, 2,000 hours.  
E 797 046 B6  
While supplies last.

**SAVE 37%**  
**4.99**  
reg. 7.99  
**1.88" x 60-Yd. Multipurpose Duct Tape**  
Applies smoothly, tears easily. Holds well on curved surfaces. Durable, waterproof backing. P 642 094 B24 While supplies last.

**Save 50%**  
**9.99**  
reg. 19.99  
**Flashlight & Keychain Combo Pack**  
Features 30-LED 2 "D" flashlight, 9-LED 2 "AA" flashlight and bonus LED keychain. Batteries included. E 127 983 B4  
While supplies last.

**True Value**  
START RIGHT. START HERE.®

**FOREST LUMBER**  
54200 Pine Crest  
659-9691 Fax  
**659-2609**

Mon.-Sat.  
8 a.m.-5 p.m.  
Sunday  
9 a.m.-1 p.m.

**WINDOWS • PAINT • TOOLS • SIGNS**

**LIGHTING • BUG CONTROL • INSULATION • ELECTRICAL NEEDS**

**SUMMER FLOWERS • WINDOW GLASS • PLUMBING • HARDWARE**



## INITIAL THOUGHTS

October a busy month for personal safety ...

**How to reach us**  
 Phone:   
 (951) 659-2145  
 or toll-free:  
 1-888-535-6663  
 Fax: (951) 659-2071  
 E-mail: itc@towncrier.com  
 Web site: www.towncrier.com

**When to reach us**

**OFFICE HOURS**  
 9 a.m. – 5 p.m.  
 Monday – Friday  
 Closed Saturday & Sunday

**DEADLINES MONDAY**  
 News Items — 10 a.m.  
 Classified Ads — Noon  
 Display Ads — Noon

◆  
**Grace Reed**  
 Publisher  
**J.P. Crumrine**  
 Editor  
**Jim Crandall**  
 Chief Operations Officer

◆  
**Marshall Smith**  
 Staff Reporter  
**Sandy Burns**  
 Classified, Service Directory  
 & Legal Sales Advisor

**James Larkin**  
 Production, Circulation  
**Shane Fender**  
 Advertising Sales

**Beth Nottley**  
 Copy Editor,  
 Staff Reporter  
**Cid Castillo**  
 Staff Photographer

**Juli Burleson**  
 Accountant

**Wayne Parker**  
 Newsstands

**Carey Powers**  
 Production, Copy Editor

**Contributors:**  
 Lee Arnson  
 Jack Clark  
 Mike Esnard  
 Chris Fisher

R.J. Gentry  
 Steve Hudson  
 Jenna Hunt

Conor O'Farrell  
 RMRU

Cihan Sesen  
 Bob Smith  
 Dave Stith  
 Bruce Watts

◆  
**Please read your ad.**  
**We assume no responsibility for errors after first insertion.**

The IDYLLWILD TOWN CRIER (USPS 635260) is published weekly for \$29 per year in county and \$33 per year out of county by the IDYLLWILD TOWN CRIER, P.O. Box 157, 54295 Village Center Dr., Idyllwild, CA 92549. Periodical postage paid at Idyllwild, CA. Send subscription and change of address requests to the above address. Please allow up to two weeks for requests to take effect.

**POSTMASTER:**  
 Send address changes to IDYLLWILD TOWN CRIER, P.O. Box 157, Idyllwild, CA 92549.

All contents of the Idyllwild Town Crier are copyrighted by the Idyllwild Town Crier. Per copy, 75 cents (tax included). Single mailing of newspaper, \$2.50.

**This newspaper is printed on recycled paper.**



October is a busy month, starting with fire prevention this week, the continuing vigil for breast cancer and the opening of Ghost-town.

Fire Prevention Week began Sunday and continues through Saturday, Oct. 9. I hope you are doing all you can to prevent fires or to minimize their consequences if one were to start in or near your home.

This year, the U.S. Fire Administration (USFA), is urging citizens to check their home fire alarms, be sure they are working and, if necessary, install them in your domicile. According to the USFA, an estimated 385,500 fires occur in residential buildings every year resulting in 2,770 civilian deaths and 13,250 injuries.

Speaking of self-checking for safety, October is also Breast Cancer Awareness Month. Women, please take the time for a self-exam, but visiting a physician is better.

Also, two local groups are sponsoring a Susan G. Komen Race for the Cure® in the next few weeks. On Sunday, Oct. 17, the Inland Empire affiliate will hold a race in Temecula (951-676-RACE (7223)). On Nov. 7, the San Diego affiliate will conduct a race for the cure (760-692-2900).

Ask yourself, what are you doing to ensure your family's safety? Whether it's installing fire alarms or encouraging your mother or wife to have a checkup, the lives you might effect belong to your family.

I'm from the East Coast. I know that suggests an aura of effete snobbery since I had never seen anything green that operates with chlorophyll, except for the plastic red geraniums, until I arrived here in paradise.

But I had used a fireplace, even a wood burning stove, enough to know one doesn't put the ashes in a cardboard box and store the container on the wood porch or deck. Hyperbole, huh?

No! Since I've been at the Town Crier, Idyllwild Fire Department has had to respond to several home fires because of the above reason.

You can prevent tragedy simply by testing and maintaining your smoke alarms and practicing a fire escape plan.

Whether you're wide awake or fast asleep, a working smoke alarm is constantly scanning the air. It never sleeps.

It's plain and simple. Smoke alarms save lives. But, they have to be installed the right way, and be working!

USFA recommends every home have both an ionization and photoelectric smoke alarm, or dual sensor smoke alarms, containing both ionization and photoelectric smoke sensors. You need both — because they detect either smoke or flames, and you never know what type of fire might start.

The 9-volt batteries that power smoke alarms should be replaced at least once each year. You can time the replacements with seasonal or time changes such as the spring or fall daylight savings time changes.

Long-life lithium will power the smoke alarm for about 8 to 10-years. Once the battery is dead, the entire smoke alarm unit, battery included, needs to be replaced. It takes just a few minutes of maintenance for years of protection.

When a smoke alarm sounds while you're cooking or taking a shower with a lot of steam, it's just doing its job. Simply press the hush button on the alarm and open a window or door. If your alarm doesn't have a hush button, wave a towel at the alarm to clear the air. Never remove the smoke alarm's battery, false alarm or otherwise.

It can take 30 seconds for a small flame to become a huge fire. In case of a fire, everyone in your home needs to know how they will get out.

Prepare an escape plan and practice it with everyone in the home. It's really important to include children. Teach them not to hide in closets or from firefighters. Everyone should gather at an established meeting place outside the home. Get out and stay out. Never go back into a burning home.

J.P., EDITOR

## READERS WRITE

### "The Big Cabin"

EDITOR:

I just read with great sadness of the fire that destroyed Lew and Irene Brahm's cabin. The cabin, as you know, has special significance to the Belden family as well as to the Brahm family.

The Brahms on several occasions graciously allowed our family to use it. My father, Ted Belden, has told us the history of the cabin.

For history's sake, I wanted to make a correction to the article. The article stated that the cabin was started in 1929. This could not be true as the Belden family only moved to the mountains in 1934 and the Brahm's cabin was not the first cabin that my grandfather, Charles Selden Belden, built after he moved to Pine Cove.

The cabin, which was called "The Big Cabin" by my grandparents, Selden and Coral Belden, was one of four cabins that he built during his early years in Pine Cove.

The "Big Cabin" was started around the fall of 1935, but not finished until 1936 or 1937. I believe my grandfather built the fireplace by hand with rocks that he hauled himself.

The story goes that he built the first fire in the fireplace using the bags from the furniture in the cabin might have been built about the same time as the cabin.

It is a tragic loss.

LORI BELDEN POPE  
 REDLANDS

### SCE's smart meters

EDITOR:

This is to inform your readers that you can (temporarily) say "No" to SCE's attempt to install a so-called smart meter in your home (which they will charge you for on your monthly bill).

A consumer organization called TURN has a website: [www.turn.org/opt-out](http://www.turn.org/opt-out).

TURN has opposed smart meter programs from the start, based on the accuracy of the technology. (A CPUC investigation of the meters is still in progress as of summer 2010.) After Pacific Gas and Electric (PG&E) installed

Editorials, letters to the editor, guest editorials and cartoons reflect the opinions of the authors and not necessarily the Town Crier or Tindle Publications.

### Mr. Funny Guy

by Chris Fisher



## Holiday closings

**Hill businesses and institutions that will be closed Monday, Oct. 11, to observe Columbus day:**

Area post offices  
 BBVA Compass  
 Idyllwild Library

Idyllwild Water District  
 Pine Cove Water District  
 Riverside County offices

**These will be open:**

Fern Valley Water District  
 Hemet Unified School District  
 Idyllwild Health Center  
 Idyllwild Pharmacy

Idyllwild Transfer Station  
 Mount San Jacinto State Park  
 Town Crier  
 U.S. Forest Service

smart meters in San Diego county, consumers' rates jumped up.

Some neighborhood groups and cities, including San Francisco, Sebastapol and Santa Cruz support

a moratorium on smart meters, as does an editorial in the San Francisco Chronicle.

DIANN COATE  
 IDYLLWILD

[See Letters, page 27](#)

## How to get a letter published

The Town Crier welcomes letters reflecting all opinions. Letters should be concise and to the point. They should be no longer than 400 words. Letters must be typewritten, double-spaced and in upper/lower case (not in all caps). Letters must be signed (unless e-mailed) and must be identified with the writer's name, address and weekday phone number.

Exceptions: Anonymous letters will not be accepted. Letters of thanks are not accepted. A special advertising rate is available for thank-you letters. Political letters cost 10 cents per word.

We reserve the right to reject or edit letters for length, taste, clarity or frequency of submission. Letters do not necessarily reflect the opinions of Town Crier staff. Letters may be submitted in person, by mail, by fax (659-2071) or by e-mail (itc@towncrier.com).



# BEFORE OUR TIME

BY ROBERT B. SMITH

## Home to summer camps...

Like thousands of others, I got my first taste of Idyllwild by attending summer camp. Numerically speaking, organized camps have been the Hill's dominant industry for nearly 90 years. But because supervised campers are typically confined to their grounds, they remain relatively invisible.



Idyllwild's pioneer developer Claudius Lee Emerson, believing camps would attract people and business that would help infuse a family atmosphere into his resort town, gave away land to scouting and religious groups. His first recipient, the Riverside County Boy Scout Council, opened Camp Emerson in 1921, which has operated continuously in the same location ever since. (In fact, it's the oldest scout camp west of the Mississippi River).

Our busiest year-round camp today, Idyllwild Pines, stemmed from Emerson's 1924 donation to a group of Christian businessmen and also continues in its original location. The following year, Emerson sold land now occupied by the Nature Center and Cedar Glen neighborhood to the Long Beach Boy Scout Council at a reduced price. Camp Tahquitz operated there until 1958, when several scout camps were consolidated into the San Bernardino Mountains.

Once the summer camp idea was planted, others joined in. In 1923, Harriet Snyder opened her Peak & Pine Camp for girls on the site of today's Rainbow Inn. She emphasized equestrian skills and maintained stables along Tollgate Road, where the L.D.S. church is now located. Peak & Pine operated for 40 summers before Snyder retired.

Fern Valley developers Frank Strong and George Dickinson got in the game in 1929 by offering free land on South Circle Drive to the Los Angeles County Christian Endeavor Union, provided the group convince enough of its constituents to buy surrounding lots. The Depression largely foiled that scheme, but the LA County and California State CE unions attracted enough donations to buy and open my "summer camp" alma mater, the Tahquitz Pines Conference Grounds, in 1931. Despite changes of management and ownership through the years, Tahquitz Pines also continues to operate.


One happy ending involved the CE unions' real estate agent, Margaret Rentchler. During negotiations, she fell in love with Idyllwild, settled here, and eventually met and married Rollin Humber, the namesake of Humber Park. (I recently discovered that it was actually my grandfather, Frank Moote, who created the holding company that bought and managed the camp for the CE unions.)

World War II failed to stifle summer camp operations, and toward its end a new wave of camps began to join the original five. Some, like Azalea Trails Girl Scout Camp in Dark Canyon, Camp Lackey (YMCA) on the north slope of Fuller Ridge, and Trailfinders Camp in Hall Canyon (now the James Reserve) were built in rugged, remote locations. More accessible Garner Valley attracted Camp Roosevelt, a family camp near Hurkey Creek that,

[See Our time, page 27](#)

**IDYLLWILD HEALTH CENTER**

Flu Shots Available • Accepting new patients



Brenda Scherlis, full-time Nurse Practitioner  
Providing comprehensive care for our community  
**OPEN Mon.-Fri. 8:30am-5:00pm**  
(951) 659-4908 54910 Pine Crest Ave.

## ON THE FRINGE

© GİHAN SEŞEN & STEVE HUDSON  
illustrator writer



## TOWN TALK

BY CID CASTILLO, STAFF PHOTOGRAPHER

*What is your opinion of the new smart readers Southern California Edison is installing?*



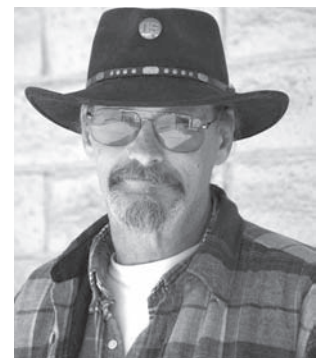
**Chris Fourroux**  
Telecommunications  
Engineer  
8-year Idyllwild resident  
*"I'll trust the equipment to give the correct readings, but what concerns me is the loss of jobs — that's a lot of meter readers out of work."*



**Marcy Lipare**  
Aesthetician  
Just moved to Idyllwild from Las Vegas  
*"I really don't trust the equipment to send the right signal. I prefer people looking at my reader."*



**John Gooch**  
Retired  
17-year Pine Cove resident  
*"Well, the power goes out all the time. If this new meter can somehow call the base and report the power outage, and the power come back on quicker, then it's a good thing. I don't know if it can do that, though."*



**Harris Byerley**  
New to Idyllwild from Texas  
Texas BBQ Chef  
*"When have you ever seen a change made by a utility company that doesn't cost you money?"*

The Town Crier's 33rd annual

# Snow Guessing Contest

An Idyllwild Tradition

*The contest will appear in the Oct. 21 issue*

**Business Owners:**

**Sign up now to distribute coupons ... Only \$26 includes coupons, fliers, publicity, increased traffic, etc.**



**Call Shane by noon on Monday, Oct. 18 to sign up or for details**

**659-2145**



## Meters

*Continued from page 1*

on customer education and information exchange." Devore explained that if a customer has smart appliances, marketed as possessing that technology capability, they would be able to monitor energy use by appliance.

When asked about a study of customer complaints regarding the spiking of energy charges after Pacific Gas and Electric (PG&E) installed Smart meters, Devore referred to the California Public Utilities Commission's (CPUC) report from Structure Consulting Group (Structure).

The report found Smart meters to be accurate in about 99 percent of testing scenarios, and also found that PG&E failed to adequately educate the public about "pervasive issues with meter data or billing systems," including the fact that PG&E installed meters in the Central Valley at the beginning of summer when energy use and prices typically spike. PG&E customers indicated that communication and notifications surrounding physical meter installation were lacking and that the transition to automate the Smart meter data for use in billing was not clearly addressed.

As a result, SCE is installing Smart meters at times when installation areas experience normal energy

use. SCE is also providing customers detailed explanatory "Welcome Packets," introducing them to Smart meters and the concomitant technology.

State Senator Dean Florez, D-Shafter, remains unconvinced about the Structure report commissioned by the CPUC. Florez plans to convene a hearing and possibly assemble a panel of experts to ensure that what is in the Structure report meets the standard of inquiry expected by ratepayers and that Smart meters meet or exceed prevailing industry standards.

The Utility Reform Network (TURN) of San Francisco, [www.turn.org](http://www.turn.org), said that "hundreds of consumers" have contacted them to complain about the PG&E Smart meters and "thousands more" have complained to the CPUC. Town Crier reader Diann Coate advised the paper that TURN is suggesting electricity customers boycott Smart meter installation by making meters inaccessible or attaching a sign that refuses installation until CPUC completes its study. See [www.turn.org/boycott](http://www.turn.org/boycott) or [www.turn.org/opt-out](http://www.turn.org/opt-out) for more information.

SCE's partner, Corix Utilities of Garden Grove, will be installing the meters in the Idyllwild area. Typically, replacement of meters takes only a minute or so. If your meter is inaccessible, Corix will leave contact

By J.P. CRUMRINE  
EDITOR

Idyllwild residents have not seen rain since July 15, when .1 inch fell. Last week, an infrequent but welcomed friend returned. Rain fell on the Hill for three days, Thursday through Saturday.

Total rainfall measured at Idyllwild Fire Station was 1.6 inches. Pine Cove received nearly 1.2 inches, according to George Tate.

Since 1948, the average October rainfall has been 1.06 inches, which has been surpassed in the

first two days of October 2010. Slightly more rain may come later this week.

Since July 1, the beginning of the rain year, total precipitation has been 1.7 inches compared to a normal average of 2.35 inches through September 30. In 2009, nearly .29 inches fell by Oct. 1 and .77 inches in 2008.

Both rain years were nearly 10 percent below the average annual precipitation of 25.7 inches.

*J.P. Crumrine can be reached at [jp@towncrier.com](mailto:jp@towncrier.com).*

# Season's first storm



South Circle Drive was pelted by driving rain on Saturday afternoon this weekend. The welcomed rain was the first storm of the season. PHOTO BY CID CASTILLO

### Free waste recycling

Hosted by the Green Coalition of San Jacinto Valley, there will be free electronic waste recycling in the Ramona Bowl Parking Lot, 27400 Ramona Bowl Rd. in Hemet, on Saturday and Sunday, Oct. 30 and 31 from 9 a.m.-3 p.m.

Items they will accept include computers, monitors, laptops, printers, scanners, copiers, phones, TVs, toner cartridges, power supplies, auto/rechargeable batteries, home entertainment systems, and small portable devices.

They will not accept refrigerators, washers and dryers, light bulbs, household batteries, and hazardous waste.

information for customers to arrange an alternate installation time.

SCE anticipates that customer use of energy monitoring data may reduce demand on the electricity grid by about 1,000 megawatts (the average California

power plant has a 70 MW capacity) and reduce greenhouse gas emissions by a minimum of 365,000 metric tons per year, the equivalent of removing 79,000 cars from the road.

*E-mail Marshall Smith at [marshall@towncrier.com](mailto:marshall@towncrier.com).*

## Churches and Spiritual Centers Directory of Idyllwild

### Chapel in the Pines Christian Fellowship

Interdenominational, Pastor Wally Boer.  
Sunday Worship Service & Sunday School, 10am  
plus Weekly Studies. Call for info, 659-0097, 659-2038.  
On Hwy 243 at Morning Sky School in Mountain Center.

### Christian Science Church

25970 Cedar St. at River Drive, 659-2511. Sunday school, 10 a.m.; Service 10 a.m.; Wednesday meeting, 7 p.m.  
Christian Science Reading Room, in church building, open to the public, Wednesday through Friday, 2 - 5 p.m.

### Community Presbyterian Church

54400 N. Circle Dr. 659-2935 • Rev. Richard Olson  
Sunday Worship - 9:30 a.m.  
Celebration: 5th grade & under during worship -  
Child care available • Wednesday: Men's Breakfast - 6:15 a.m.

### Idyllwild Bible Church

25860 Highway 243, Pastor Tim Westcott.  
A Family Friendly Bible Based Fellowship.  
Sunday Worship & Nursery Care, 9 a.m.  
Sunday Worship, Nursery Care & Sunday School, 10:45 a.m.  
Mid-week Bible Studies & Youth Groups.  
Hymn Singing 6:30 p.m. 2nd Sunday  
Call Church Office for Information. 659-4775

### Queen of Angels Roman Catholic Church

54525 N. Circle Dr., P.O. Box 1106, Idyllwild, CA  
Father Charles E. Miller  
Mass Schedule: Tues.-Fri. 8:30 a.m.;  
Sat. 5 p.m.; Sun. 8 a.m. + 10 a.m.;  
Confession: Sat. 4:30 p.m. or by appt. 659-2708

### St. Hugh's Episcopal Church

An Anglican House of Prayer for all people  
Rev. Gordon Scheible • Sunday Service, 10:00 am  
25525 Tahquitz Dr. (in Fern Valley off South Circle Dr.)  
Phone (951) 659-4471

### Spiritual Living Center

Idyllwild Religious Science  
26120 Ridgeway Dr. (the Courtyard Building) 659-3464.  
Dr. Betty Jandl. Classes available - contact Church;  
Sunday service, 10:00 a.m. Sunday school, 10:00 a.m.;  
Teen group, 10:00-11:30 a.m. Sundays.

### Shiloh Christian Ministries

~ FULL GOSPEL ~  
54968 Upper Pine Crest  
Pastor Kristeen Bandelin 659-2416  
Sunday Worship 10 am - Wed. Bible Study 7 pm  
International Healing Rooms of Idyllwild  
First three Tuesdays., 5 p.m. to 7 p.m. 659-5255

### Yokoji Zen Mountain Center

58900 Apple Canyon Rd., Mtn. Center, CA 92561  
Zen Buddhist Retreat Center & Monastery  
Under the direction of Charles Tenshin Fletcher, Roshi.  
SUNDAY PROGRAM 9:30 a.m. to 1 p.m.  
Including silent meditation, Buddhist service, lecture & lunch. Meditation instruction available. Call 659-5272 or 3275 for info. [www.zmc.org](http://www.zmc.org)

## Lodging Directory of Idyllwild

<p><b>The Fireside Inn &amp; Cabins</b> • Fireplaces, TV/DVD players, pets welcome • 1-877-797-3473 54540 North Circle Dr. • <a href="http://www.thefireside-inn.com">www.thefireside-inn.com</a></p>	<p><b>The Bluebird Cottage Inn</b> on 3 ac. • <a href="http://www.thebluebirdcottageinn.com">www.thebluebirdcottageinn.com</a> • Dogs welcome 26905 Hwy. 243 • (951) 659-2696</p>
<p><b>Quiet Creek Inn &amp; Vacation Rentals</b> Quality Cabins • Creekside • Fireplaces • Pet Friendly 26345 Delano Dr. • <a href="http://www.quietcreekinn.com">www.quietcreekinn.com</a> • 800-450-6110</p>	<p><b>Edelweiss Lodge</b> • <a href="http://www.1cabin4u.com">www.1cabin4u.com</a> Romantic cabins • Kitchens • Fireplaces 25055 Marion Ridge Dr., P.O. Box 1747, 659-2787</p>
<p><b>Alhatti Private Christian Resort</b> A private Christian setting • Lodging, Weddings, Conferences 23551 Hwy. 243 • (951) 659-2066 • <a href="http://www.alhatti.com">www.alhatti.com</a></p>	

**Check out our Lodging Directory Web site at [www.towncrier.com](http://www.towncrier.com)**



# Nestande considers action on propane pricing



Assemblyman **Brian Nestande** spoke to Idyllwild residents last week.

PHOTO BY J.P. CRUMRINE

BY MARSHALL SMITH  
STAFF REPORTER

As winter descends on the Hill, many residents look warily at their propane tanks, worried that propane costs, which traditionally escalate through the winter, will cause household budgets significant hardships.

The worry is justified because propane prices are not regulated by the California Public Utilities Commission (CPUC) and are not made public by the various Hill propane companies. As a result, Hill residents, even those with the same propane company, can be paying wildly different price per gallon charges, depending on vagaries of propane pricing.

At a recent Idyllwild town hall meeting with Hill Assemblyman Brian Nes-

tande (R-64, Palm Desert), propane pricing dominated much of the discussion with attendees complaining about the lack of regulation and uniform pricing structure. Attendee Jerry Holldbber complained that there is no regulation of propane prices and that price regulation should come under CPUC.

"I'd have no problem introducing something like that," said Nestande, "since we're already a highly regulated economy."

Attendees also noted, with alarm, that Hill residents, upset over greatly varying propane prices, often drive to St. George Spirit station in Hemet to fill up propane tanks and then transport filled tanks back up the Hill without proper signage warning of risks to other motorists. Propane prices at St. George

are typically lower than Hill prices.

Nestande received an earful from those in attendance about how prices from the same propane company can vary by as much as \$2 to \$3 per gallon, and how charges to remove one company's propane tank when switching to another often "lock in" customers who don't want to deal with the hassle.

Idyllwild resident Larry Baker argued that if a person owned their own tank they should be able to obtain propane from their company of choice. Retired resident Jerry Buchanan noted that propane companies would object to that on grounds of liability. At the end of the discussion, even with Nestande's willingness to introduce legislation, attendees expressed frustra-

## Mont Belvieu spot prices

Date	Price per Gallon of propane
Sept. 20	\$1.1382
Sept. 21	\$1.1413
Sept. 22	\$1.1488
Sept. 23	\$1.1513
Sept. 24	\$1.1600

tion in determining a propane price applicable to the whole community, similar to how gasoline prices are publicly posted.

Most of the propane used in the U.S. originates from storage facilities located in Mont Belvieu, Texas, just east of Houston. Most propane pricing is based on the Mont Belvieu spot price, which is readily available online on a daily basis. Propane dealers charge a premium above the Mont Belvieu spot price to cover the cost of transit, storage and overhead, commonly called the "basis." (Mont Belvieu plus 25 cents/gallon is the way this is commonly stated). While propane future contracts are traded on the New York Mercantile Exchange, it is not a heavily traded commodity, which is why the market relies on the Mont Belvieu spot price (See <http://www.eia.doe.gov/>

[dnav/pet/hist/LeafHandler.aspx?n=p&s=rprousg&f=d](http://www.eia.doe.gov/dnav/pet/hist/LeafHandler.aspx?n=p&s=rprousg&f=d)).

Add 25 cents to the Mont Belvieu price to get some sense of a spot price, including transit. The quoted Mont Belvieu propane price per gallon for Oct. 1, 2010 is \$1.166 or \$1.17 per gallon. Add 25 cents and the price would be \$1.42 per gallon (although transportation costs to the West Coast could add a higher premium). Today's propane price (Oct. 5) at St. George Spirit station in Hemet is \$1.89, which would seem to add a premium West Coast transportation charge.

Propane prices do fluctuate by season, with winter months often seeing a 100 percent increase over summer months. Typically, propane prices are at their highest from October through February due to heating demand.

[See Propane, page 27](#)

## Nestande

*Continued from page 1*

funds. This year, the state has the same \$20 billion budget gap.

"There was no long term adjustment," he said. "No realignment with reserves. There is a structural deficit and the overhaul hasn't changed."

In his opinion, he doubts the current proposal will bring any long-term changes and the problem will become the new governor's first major crisis in January.

"This will get us into the credit markets, to avoid the Controller issuing IOUs," he said. "The problem will re-occur in January or February for the next governor."

"Long term, I'm worried about inflation," he averred. "Forty percent of the budget is for debt payments or use."

The issue of public employee pensions was also dis-

cussed. While some referred to the recent revelations of salary and pension abuse in Bell, Nestande said that the governor has been trying to negotiate changes with state employees for more than a year.

The estimated cost of public employee pensions ranges from \$200 to \$500 billion, according to Nestande. He has recommended legislation that would make the state's long-term liabilities transparent. The public should know the commitments that legislators are making, he said.

"One solution is to stop pension spiking in an employee's last year of work," he recommended. "We can go to a rolling 3-year average salary." He suggested that this solution may be included in the ultimate budget bill enacted later this month.

Before leaving the budget problem, Nestande shared his thoughts about the state revenues. He argued that the

state would be better overall if it reduced its dependence on property tax and enacted a consumption tax. One significant advantage, according to the Assemblyman, is the reduction in volatility.

The recent real estate boom and then bust has played havoc with state revenues, he stated. Consumption is much more constant and less volatile.

"The nine states with some sort of service tax were ultimately more stable revenue than the states relying on income or property taxes," he said.

Later in the discussion, AB 32 was briefly addressed. The bill, which addresses climate change, may be suspended if Proposition 23 is passed in November.

Nestande expressed concern about the "huge" regulatory structure the legislation would create. He agreed that government had a role to set controls to protect the environment. But he prefers

to regulate the problem at the service level.

In his view, the controls or incentives are more effective when directed at the delivery of the service or the consumer.

"Most of us are environmentalists, but when you regulate so much, you upset the natural order," he commented.

His example was SB 375 that set up state controls or oversight of local development decisions. The result is a great benefit for Sacramento lobbying firms, according to Nestande.

"The Attorney General has to approve the county's plan and these lobbyists set meetings with the AG to lobby for changes and approval, not the local boards," he said. "We've turned planning decision over to the AG office — a massive change in the regulatory scheme."

*J.P. Crumrine can be reached at [jp@towncrier.com](mailto:jp@towncrier.com).*

On the end,  
it's all about the baby.

Dr. Smith's Diaper Ointment.  
Problem solved.

Copyright © 2010 Mission Pharmacal Company. All rights reserved. DRS-10901

**MASON ONLINE  
GALLERY  
CONSIGNMENT**

trading  
assistant  
on  
**ebay**

Your Local Online Consignment &  
Inventory Liquidation Specialist  
951-659-5325 [kathysroom@roadrunner.com](mailto:kathysroom@roadrunner.com)

He's a stand-up guy.

**Fritz Coleman**  
*returns to Idyllwild for a night of  
comedy at Idyllwild Pizza!*

**Sat., Oct. 16, 8 p.m.**  
Tickets go on sale Monday,  
Oct. 11 at Idyllwild Pizza.  
Pre-sale tickets only — no door sales.  
\$15 per ticket  
(\$2 of each ticket sale goes to the Idyllwild  
Community Center playground, and Fritz is donating his fee to Living Free Animal Sanctuary.)

*Come enjoy a night of comedy and  
help support ICC and Living Free.*



# Four HUSD candidates for two seats

BY MARSHALL SMITH  
STAFF REPORTER

Four candidates, incumbent Joe Wojcik, parent and attorney, challenger Horacio "Ross" Valenzuela, retired educator and librarian, challenger Jim Little, retired school employee, and Jayson D. Sandoval, motor vehicle representative, compete for two seats on Hemet Unified School District's (HUSD) Board, Trustee Area 3, the Hemet Valley floor.

Four-year incumbent Wojcik likes the Measures of Academic Performance (MAP) program new Superintendent Dr. Steven Lowder intends to import and implement at HUSD. MAP is a testing tool designed to measure where each child stands in their unique learning path. MAP dynamically adapts to the students' responses as they take the test: answer a question correctly and the test presents a more challenging item; miss a question and MAP offers a simpler item. Wojcik believes that adaptation is important since it measures a student's uniquely individual performance, not the same kind of cookie cutter testing that is federally and state mandated.

"We assume, wrongly, that each child learns at the same rate," said Wojcik. "And that leads to rigid curricula, and to teaching to the middle. It forgets those at the top who we want to continue to excel." Wojcik also believes that it is counterproductive to assume that each student is on a college or academic track. "Does every student have to take or benefit from taking Algebra II?" Wojcik asked. "Does each student need that? Curricula should have some relation to what a student is interested in, not what a legislator thinks is important."

Wojcik referenced European models where, at eighth- or ninth-grade level, students, based on interests, ability and test scores move into either an academic track or apprenticeship and trade school track.

Wojcik acknowledged that current law makes it difficult for a school district to carve out meaningful



**Horacio "Ross" Valenzuela,**  
HUSD candidate

exceptions to the college for everyone's mentality. "We try, to the extent we can, to cater to the individual needs of our students," he said, noting the district's charter schools, the Hemet Academy for Applied Academics and Technology, the Western Center Academy, and alternative programs available through the Alessandro continuation school and through the AdvancePath online curriculum. Wojcik believes that if money were available and laws permitted, it would be beneficial to offer different forms of educational paths to students and to get out of the mold of one size fits all.

Wojcik also noted the board's efforts to preserve extra-curricular programs, including the arts. "We're supposed to be preparing our students for life, as fully rounded individuals and we need those programs for that," he said. "We're trying to cut [budgets] in areas that don't impact kids directly." One of those cuts Wojcik supported was not renewing four HUSD cabinet positions.

Jim Little, retired school worker in warehouse delivery, maintenance, grounds and custodial, said he is running because he has a passion for the district, its teachers and students and because his grandchildren will be attending district schools.

He is concerned that the district's administration is not prudently spending district funds. "I believe our [HUSD] administration is frivolously spending tax dollars," said Little. Little cited the prior administration practice of holding a symposium in resort areas such as Palm Springs before the school year's commencement, and giving raises for cabinet members when

other staff got no raises and retirement packages for key administrators.

"They set themselves up with one helluva program," said Little. "Pendley set up a great retirement. This affects the classrooms [and what money is left for classroom programs]."

Little cited other examples of what he considers bad spending decisions by the district. "The district bought a \$30,000 lawnmower," said Little. "I was there [in maintenance] when it came in; also a \$12,000 to \$13,000 [ATV] vehicle to drag the track at Tahquitz High School; and \$500 for two chairs, one for the Superintendent and one for a secretary; and \$25,000 to a search firm to help locate a new Superintendent. We have an HR [Human Resources] department. They could have hired the guy. That's what I'm looking to change. I want to get in there to change the board's eyes. We need that money in the classrooms so teachers can do their jobs," he said.

Little opposes the current testing procedures that lock teachers and the district into fixed curricula. "Current testing procedures take away the flexibility of



**Jim Little,** HUSD candidate

teachers to teach [to the needs of students] in their classrooms." Little also opposes the current bussing restrictions that he says require grade school students within five miles of their schools to walk. Little noted the number of sex offenders resident in the Hemet Valley, and believes that current bus regulations put students at risk. Little also advocates cutting administration further to free up classroom dollars.

Horacio "Ross" Valenzuela is a retired educator and librarian, with a masters degree in library science from Cal State Fullerton. He has worked in Los Angeles and Riverside County school systems since 1973. He came to the Hemet Valley in 1978

where he has worked ever since, retiring in 2007 from Dartmouth and Santa Fe Middle Schools. Valenzuela also taught as adjunct faculty at Mount San Jacinto Junior College.

Each of his three children, all Hemet High School graduates, have at various times been teachers. He has six grandchildren who will be attending district schools.

His primary goal is ensuring safety in district schools and giving all students an equal opportunity to learn. "I'm running to do my civic duty to my community," he said, "and to make sure that how we prioritize spending has a direct impact on the classroom." Valenzuela noted that elementary school teachers, of which his daughter is one, routinely spend from \$500 to \$1,000 per year of their own money on classroom supplies. "Board members need to be asking why this is the case," he said.

As to his major agenda items, Valenzuela cited maintaining safe school environments in which both parents and students feel secure, ensuring continued school resource officer deployment from Riverside County Sheriff's Depart-



**Joe Wojcik,** incumbent board member, and HUSD candidate

ment, conducting regular disaster and fire drills, ensuring that teachers are sensitive to the needs of all kids, acknowledging economic, religious, and racial differences and perpetuating an atmosphere of tolerance in district schools.

"As a school board member, I'll seek to promote more volunteer participation in classrooms, especially of senior citizens who could make meaningful contributions."

The fourth candidate, Jayson D. Sandoval has not responded to requests for an interview.

Marshall Smith can be reached at [marshall@towncrier.com](mailto:marshall@towncrier.com)

## ATTENTION HOMEOWNERS AND UNLICENSED CONTRACTORS

"California Business and Professions (B&P) Code requires all home improvement jobs (grading, construction, remodeling, landscaping, etc.) valued at more than \$500 for labor and materials be done by an individual or company with a CSLB (Contractors State License Board) license, and that license number must be included in all advertisements for their contracting services. ... The number is required by law to be printed on all contractor business and advertising documents, such as the bid, contract, print ad, or business card." (This is not the same as a Riverside County Business Registration number, AKA: County Business License number.)

"If you're caught contracting (verbally or in writing, by bid or hourly) without a license, you will likely have to go in front of a judge to answer to misdemeanor charges, which carry a potential sentence of up to six months in jail and/or a \$500 fine, and a potential administrative fine of \$200 to \$15,000. If you get caught again, the penalties get stiffer. You could face a mandatory 90-day jail sentence as well as a fine of 20 percent of the contract price of the work performed, or a \$4,500 fine."

Source: <http://www.cslb.ca.gov>

Ask the person offering their services which license they hold, if any.

- PAID ADVERTISEMENT -

## WANTED! Phone Numbers!

*If you aren't listed with Verizon, you aren't automatically in the Idyllwild Phone Book!*

To add, change or delete your residential white pages listing in the **2011 Idyllwild Phone Book**, please do so in the space provided below & drop off or mail by Monday, Nov. 3, 2010 to:

**Cell or 659 numbers  
Idyllwild Town Crier  
54295 Village Center Dr.  
P.O. Box 157 • Idyllwild, CA 92549**

Change  Deletion  Addition

( )  
Name Phone #

Signature

### Important Notes

If you made changes to your listing in previous years, you may need to request it each year. Also, if you were left out of last year's book, you may want to turn in this form.

**For advertising information, please call 659-2145.**



# On the Town

Local Dining, Arts & Entertainment



## Arts & Entertainment Calendar

Arts & Entertainment Calendar listings are at the discretion of the editor. Submittal forms can be picked up at the Town Crier.

### Wednesday, Oct. 6

Native Basketry Roundtable, 11 a.m. Idyllwild Nature Center.  
Desert Rose, 6-9 p.m. Café Aroma.  
"Wall Street," 7 p.m. Rustic Theatre.

### Thursday, Oct. 7

Bridge, 12:30-4 p.m. Creekstone Inn. For information, call 659-4910.  
Peter Curtis, 6-9 p.m. Café Aroma.  
"Wall Street," 7 p.m. Rustic Theatre.

### Friday, Oct. 8

Blast to the Past, 5-8 p.m. Idyllwild School Gym.  
Willy B., 5:30-8:30 p.m. Arriba Mexican Restaurant.  
The GirlZ, 6-9 p.m. The Creek House.  
Paul Carman, 6-9 p.m. Café Aroma.  
"Easy A," 7 p.m. Rustic Theatre.  
Creative Writing Guest Reading: Orlando White, 7:30 p.m. Stephens Recital Hall, Idyllwild Arts.  
Karaoke, 8 p.m.-midnight. Jo'An's Restaurant.  
Karaoke, 9 p.m.-2 a.m. Bone Daddyz.

### Saturday, Oct. 9

Live Music, 8 a.m.-5 p.m. Idyllwild Tea Company.

David Jerome, 9 a.m.-noon; Greg Jones, 1-3 p.m. & 6-9 p.m. Café Aroma.  
Idyllwild Fire Department Open House with refreshments, 10 a.m.-2 p.m. Idyllwild Fire Station.  
"Climbing Tahquitz Rock," Historical Exhibit, 11 a.m.-4 p.m. Idyllwild Area Historical Museum.  
Women Inspiring Women, Part 2, 2-4:30 p.m. Spirit Mountain Retreat.  
"Easy A," 2, 4:30 & 7 p.m. Rustic

Theatre.  
Art Alliance of Idyllwild 13th-annual Art Walk & Wine Tasting, 2-5 p.m. Map at Town Centre.  
Sandii Castleberry & Paul Carman, 5:30-8:30 p.m. Arriba Mexican Restaurant.  
Satellites, 9 p.m.-2 a.m. Bone Daddyz.

### Sunday, Oct. 10

Live Music, 8 a.m.-5 p.m. Idyllwild Tea Company.

See A&E, page 14



Duffy Hudson as Albert Einstein at the annual meeting of the Friends of the Idyllwild Library, Saturday, Oct. 2.

PHOTO COURTESY OF FRANCOISE FRIGOLA



### THE AMERICAN LEGION

★ Public Always Welcome ★ Post 800

54360 Marion View Dr. 659-3517

(Alcoholic Beverages Sold to Members & Their Guests Only)



## Horseshoe Tournament

Saturday, Oct. 16

\$15 Entry Fee

Sign-ups from 10am-Noon

Tournament starts at 12 Noon

Prizes for 1st, 2nd & 3rd place

**Goodtimes Pub & Grill**  
11am-8pm Wed.-Sun.  
Specials Available 5-7pm  
Wed. Oct. 6 – Fish Tacos & Ground Beef Tacos, (DINE-IN ONLY) \$1<sup>00</sup> each.  
Thurs. Oct. 7 – Fish & Chips, All you can eat, (DINE-IN ONLY) \$10<sup>99</sup>  
Wed. Oct. 13 – Fish Tacos & Ground Beef Tacos, (DINE-IN ONLY) \$1<sup>00</sup> each.  
Thurs. Oct. 14 – Fish & Chips, All you can eat, (DINE-IN ONLY) \$10<sup>99</sup>  
**Best Burger on the Hill**  
659-5222 • 26345 Hwy. 243

**The Gastrognome**  
*Think Gnome!*  
**Breakfast Lunch Dinner**  
Open Daily from 10:00am  
Cocktails CafeMenu Catering  
Reservations or information 659-5055

**OPEN TO THE PUBLIC**  
**Crafts Show & Sell**

Thousand Trails, a private preserve, located at 24400 Canyon Trail in Pine Cove, opened to nonmembers effective Feb. 1, 2010. Doing so has created opportunities for all Idyllwild and Pine Cove residents to rent a table at our monthly vendor craft tables for show and sell. The Show & Sell will be the first Saturday of the month. Please contact Chris Reed, Recreation Director, at (951) 659-0698 for further details. This is a first come, first served basis so call ahead to reserve your table. We are looking forward to meeting all of you and to seeing your crafts and talents.

While you are shopping at the Market Place, take some time to enjoy a hamburger or hot dog with all the fixings for a reasonable price at the Coyote Grill Patio area.

Looking forward to seeing you here at our wonderful preserve!

**Thousand Trails** LP  
America's Finest Family Camping

**Jo'An's**  
Just in case you haven't heard, the original

**JO'AN IS BACK**  
at Jo'An's Restaurant

We have **SPECIALS** on **BREAKFAST, LUNCH, and DINNER, MONDAY-FRIDAY**

**MONDAY NIGHT FOOTBALL SPECIALS**

We will be closed for repairs Monday – Wednesday, Oct. 4 – 6  
Open as usual, Thursday, Oct. 9

Our **HALLOWEEN COSTUME PARTY** is in the works with **CASH PRIZES** and **THE SATELLITES** providing the music.

**the CREEK HOUSE**

Idyllwild's Classic Creekside Dinner House  
Steaks\*Seafood\*Salad Bar\*Cocktails  
659-0686  
Dinner Thursday ~ Sunday  
Happy Hour Nightly until 5:30 p.m.  
54905 No. Circle Dr.

– Live Entertainment in the Lounge –  
**Friday, Oct. 8, 6-9 p.m.**  
**The GirlZ**



# Satirist Harry Shearer's new take on 'Peter and the Wolf'

By Marshall Smith  
Staff Reporter

Renowned satirist and "This is Spinal Tap" alumnus Harry Shearer brings a whole new take to Sergei Prokofiev's 1936 composition "Peter and the Wolf." On Saturday, Oct. 16 and Sunday Oct. 17, Shearer, accompanied by the Idyllwild Arts (IA) Orchestra, brings his version to Idyllwild at the IAF Theatre on campus.

IA Orchestra Conductor Peter Askim encouraged Shearer, also of "The Simpsons," "Le Show," Christopher Guest's "A Mighty Wind" and "For Your Consideration" fame, to make the performance his own. "Go your own way with it," Askim advised Shearer.

Any fan of Shearer's long, iconoclastic career would recognize that with that level of encouragement, Shearer would spin something provocatively entertaining. So Shearer's

"Wolf" will recount Peter's and friends' adventure in the form of headline news and commentary from Wolff Blitzer and Larry King.

"We'll be telling the same story as if it were a news story," said Shearer. "It will be fully scripted and will be a challenge for all of us."

Shearer's newscast approach to "Peter" harkens back to his 1969 to 1976 radio comedy group "The Credibility Gap," which featured Shearer and newsmen from KRLA 1110 presenting fractured news reporting and commentary. Also bolstering Shearer's newscast approach to "Peter" is the format of his long-running National Public Radio program, "Le Show," a compilation of satirical news commentary and music and sketch comedy that Shearer says "takes aim at the mega morons of the mighty media" who, according to Shearer, be-

lieve that feedback is more important than content and are now using focus groups to evaluate news stories.

And will anything be sacred when Shearer takes on Prokofiev? Probably not, as long as Shearer is at the helm. He said he believes in equal opportunity skewering.

A number of narrators have tackled "Peter" on record, including members of Prokofiev's family, Sir Ralph Richardson, Sir John Gielgud, Leonard Bernstein, Basil Rathbone, Peter Ustinov and Sean Connery, but Shearer's will be an unprecedented and unique departure.

Shearer has received several Primetime Emmy Award and Grammy nominations and in 2009 received a star on Hollywood's Walk of Fame in the radio category. Shearer cocreated, cowrote (although much of the film was improvised), and costarred in 1984's "This

is Spinal Tap," which is ranked 29th on the American Film Institute's top 100 American cinema comedy movies and was selected by the Library of Congress for inclusion in the United States National Film Registry as a film "culturally, historically [and] aesthetically significant."

The Saturday, Oct. 16 IA performance is a "special performance for Idyllwild Arts families," and, as such, is closed to the public. The Sunday, Oct. 17 performance is open to the public and a \$10 donation is suggested.

Shearer will return to Idyllwild to participate in the Thursday Nov. 18 presentation of composer Richard Thompson's genre defying "Cabaret of Souls," also under the direction of Peter Askim.

Marshall Smith can be reached at [marshall@towncrier.com](mailto:marshall@towncrier.com).

## Lagoni photography reception



A reception was held this weekend at Café Aroma to display the works of renowned photographer Pamela Lagoni, center. Viewing Lagoni's photos taken in Nepal, Mexico, Bhutan, Alaska, Africa, Europe, China and the Arctic, are Forrest Dobson, left, and Shelley Currie, right. Music at the event was provided by popular singer-guitarist Kevin Danzig.



**Seafood**

**BREAKFAST All DAY**  
served *Every* DAY

**Lunch Special (Mon.-Fri.)**  
**Dinner Specials**  
**Champagne Sunday Brunch**  
**Full Bar Open 7 Days**

*Monday Night - Taco Night*  
*Wednesday Night - Tostada Night*  
*Thursday Night - 1/2 Priced Reg. Margarita & Beer Night*

★ LIVE MUSIC 5:30 p.m. - 8:30 p.m. ★  
FRIDAYS: Willy B.  
SATURDAY: Sandii Castleberry & Paul Carman

**25980 HWY. 243**      **OPEN 8 AM - 9 PM**  
**659-4960**                      **7 DAYS A WEEK**

## The Chakra Shack

Spiritual Art Gallery, Tapestries, Sarongs, Clothing & Jewelry,  
Gifts, Yoga Supplies, Intuitive Readings, Meditation Room,  
Vintage this-n-that, Reading Room, Special Events.  
Portrait Photography Studio by Julia

*Save 10% on purchases over \$50\**

54750 North Circle Dr. (Next to Café Aroma)

(951) 659-3191 ☎ [www.chakrachack.com](http://www.chakrachack.com)

We Gift Wrap and Ship Worldwide

\*Excluding consignment merchandise

WWW.RUSTICTHEATRE.COM

THE RUSTIC THEATRE & Performing Arts

VIDEOS · DVD'S · PLAYS · CONCERTS · PRIVATE RENTAL

Showing Oct. 8<sup>th</sup> through Oct. 14<sup>th</sup>

### "Easy A"

The escape of a little white lie teaches a clean-cut teenager (Emma Stone) to use the high-school rumor mill to her advantage.

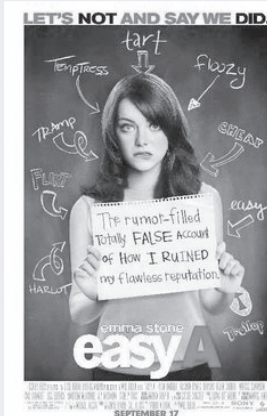
**Starring:** Emma Stone, Penn Badgley, Amanda Bynes, Dan Byrd, Thomas Haden Church

**Director:** Will Gluck

**Genre:** Comedy

**Rated:** PG-13

**Runtime:** 1 hr. 33 min.



**Showtimes: Nightly: 7:00 pm**

**Sat. & Sun.: \*2:00, 4:30 & 7:00 pm**

**Admission: Adult, \$9.00**

**Senior (62+), Child (11+) & \*Matinée: \$7.00**

**Don't forget, we have DVD rentals**

54290 N. Circle Drive Idyllwild CA 951.659.2747



# Discover mountain gardening

By DEBORAH M. GMEINER  
IDYLLWILD GARDEN CLUB

If you read the Town Crier last month, there was an article stating that we are at significant risk for a dry winter. Although we had rain this week, water shortages always loom over us. The landscape consumes a significant part of household water usage. Los Angeles and San Diego are rationing water. Desert communities are adopting native landscaping plans. So, what is a mountain gardener to do?

Go native and drought tolerant in your garden. Use plants that, once established, need little or no water. One of the best examples is in the Idyllwild School's Junior Garden. This garden blooms

in spring with blue, yellow and red flowering shrubs and trees. Another local native garden with flowering plants is at the Idyllwild Water District.

To make going native easier, the Idyllwild Garden Club will hold its annual native plant and bulb sale and gardening event, "Discover Mountain Gardening," from 10 a.m. until 4 p.m., Saturday Oct. 16. This year's event will include a free-to-the-public presentation by noted author and horticulturist, Jan Busco, the author of "Native Plants for High Elevations." She will share information about native plants suitable for Idyllwild from 10 a.m. until 11 a.m. at the Caine Learning Center. Ms. Busco's presentation is

cohosted by the Friends of the Idyllwild Library, the Fern Valley Water District, and the Idyllwild Water District.

The bulb and native plant sale will be held from 11 a.m. until 4 p.m. at the Idyllwild Area Historical Society. Proceeds from the sale will be used to support the Historical Society Village Garden. The Pine Cove Water District will cohost a free children's garden table, with donations going to the Junior Garden Program.

Fall is the ideal time for planting bulbs and natives. It allows the plant time to establish the root system without the need to water excessively, which can threaten the life of the plant. Native plants on sale will include manzanita, toyon, California fuschia and elderberry. Each

of these plants benefit from fall planting. Their colorful foliage and berries are ideal for mountain gardens.

A variety of exceptional native and naturalizing bulbs will be available for sale, including golden stars and mariposa lilies. There will also be several varieties of daffodils from an exceptional grower. These flowering bulbs will naturalize and bring a burst of color to a spring garden.

In addition to the plant sale, Edith Brix will demonstrate various uses for native plants, including plants that are edible and decorative. Gary Parton, noted lilac grower, will discuss plans for restoration of the Village Garden and for the introduction of a thousand lilacs to the business district.

## Children's books sought for school library

Karen Visel, Idyllwild School librarian, said she welcomes donations of children's books to be used in the school library and for children to check out to read at home. Donations of books in good condition can be made at the Idyllwild School office.

### Celebrate Recovery in Mountain Center

A Christ-centered, 12-step addiction recovery program called Celebrate Recovery meets twice a week at the grounds of the former Morning Sky School in Mountain Center.

On Tuesdays from 6:30 to 8 p.m. there is a 12-Step Study meeting. Fridays the group meets from 6 to 7 p.m. for a barbecue, followed by a 7 to 9 p.m. Open Share meeting.

Celebrate Recovery began as a Saddleback Church program, and has now expanded nationwide. The Mountain Center meetings are sponsored by Chapel in the Pines. For more information, call Pastor Wally Boer at 659-0097.

### Anza Citizens Patrol seeks volunteers

The Anza Citizens Patrol is now accepting applications for the prestigious position of volunteer. You may even choose your own days and hours. The meetings are held the first Tuesday of every month. Please call Brian at 951-763-5324 for more information.

### Medicare info for baby boomers

On Jan. 1, 2011, the first "official" California baby boomers will turn 65 and become eligible for Medicare benefits. A group called "Early Baby Boomers" have simplified information about Medicare, Medigap and other life questions into a brief and easy-to-follow website at [www.ababyboomersguide.com](http://www.ababyboomersguide.com).



**ART ALLIANCE OF IDYLLWILD**  
**Art Walk & Wine Tasting**  
Sat., Oct. 9, 2010  
2-5 pm  
\$25 ticket includes commemorative wine glass - Buy online now at [www.artinidyllwild.com](http://www.artinidyllwild.com)  
Sponsored by **Chris Maxson & The Rainbow Inn Idyllwild**  
One of the 100 Best Art Towns in America  
**877.439.5278**

## IdyllwildARTS EVENTS

### Friday, October 8

*Creative Writing Guest Reading:* Orlando White. 7:30 PM, Parks Exhibition Center.

### Sunday, October 10

*Guest Recital:* Tina Su, *French horn* and Judy Huang, *pianist*. 3 PM, Stephens Recital Hall.

### Monday, October 11

*Guest Recital:* Duo-pianists David Viscoli and Daniel Rieppel. 7:30 PM, Stephens Recital Hall.

### Friday, October 15

*Family Weekend Exhibition:* Opening Reception. 6 PM, Parks Exhibition Center. Show runs through October 29.

*Creative Writing Reading.* 7:30 PM, Parks Exhibition Center.

### Saturday, October 16

*Idyllwild Arts Academy Orchestra Concert: Peter and the Wolf.* 4 PM, IAF Theatre. Special performance for Idyllwild Arts families.

### Sunday, October 17

*Musical Theatre Cabaret.* Noon, Rush Hall.

*Idyllwild Arts Academy Orchestra Concert: Peter and the Wolf.* 2 PM, IAF Theatre. Suggested donation of \$10.

### Wednesday, October 20

*LabWork.* 7:30 PM, Rush Hall.

### Friday, October 22

*College & Conservatory Fair.* Noon-2 PM, Nelson Dining Hall.

### Monday, October 25

*Music in the Meadow.* 7:30 PM, Stephens Recital Hall.

### Tuesday, October 26

*Guest Recital:* Michelle Schumann, *pianist*. 7:30 PM, Stephens Recital Hall.

Listed events are open to the public and admission is FREE  
951-659-2171 x2200 • [www.idyllwildarts.org](http://www.idyllwildarts.org)

## SOUTHERN CALIFORNIA FAIR

Carnival • Food • Exhibits  
Shopping • Music • Livestock

**STEER OVER HERE**  
October 9<sup>th</sup> - 17<sup>th</sup> 2010

### Motorsport Action

All shows FREE with paid Fair admission

**Sprint Car Races** ~ Saturday~ Oct. 9 ~ 1:30 & 7:00  
**Demolition Derby** ~ Sunday Oct. 10 ~ 1:30 & 7:00  
**Auto Hockey** ~ Monday & Tuesday Oct. 11 & 12 ~ 7:30  
**Auto Hockey Finals** ~ Wednesday Oct. 13 ~ 7:30  
**Freestyle MX** ~ Thursday Oct. 14 ~ 7:30  
**Monster Truck Shows** ~  
Friday Oct. 15 ~ 7:30  
Saturday Oct. 16 ~ 1:30 & 7:00  
& Sunday Oct. 17 ~ 1:30  
**RV Motorhome Demo Derby** ~  
Sunday Oct. 17 ~ 7:00

**They're Big! They're Loud! They CRUSH!**

Discounts and Information available online  
[www.SoCalFair.com](http://www.SoCalFair.com)

LAKE PERRIS FAIRGROUNDS

18700 Lake Perris Drive Perris CA ~ 951-657-4221



**A&E**

*Continued from page 11*

**Ernesto Ale**, 9 a.m.-noon; **Kojo & Faultline**, 1-3 p.m.; **Skeleton Crew**, 6-9 p.m. Café Aroma.  
**"Climbing Tahquitz Rock,"** Historical Exhibit, 11 a.m.-4 p.m. Idyllwild Area Historical Museum.  
**"Easy A,"** 2, 4:30 & 7 p.m. Rustic Theatre.

**Monday, Oct. 11**

**Dan Papaila**, 6-9 p.m. Café Aroma.  
**Movie Night**, 7 p.m. The Chakra Shack.  
**"Easy A,"** 7 p.m. Rustic Theatre.  
**Guest Recital: Duo-pianists David Viscoli and Daniel Rieppel**, 7:30 p.m. Stephens Recital Hall, Idyllwild Arts.

**Tuesday, Oct. 12**

**Jazz Night**, 6-9 p.m. Café Aroma.  
**"Easy A,"** 7 p.m. Rustic Theatre.

**Wednesday, Oct. 13**

**Dalea Cherie and Rocky Zharp**, 6-9 p.m. Café Aroma.  
**"Easy A,"** 7 p.m. Rustic Theatre.

**Thursday, Oct. 14**

**Bridge**, 12:30-4 p.m. Creekstone Inn. For information, call 659-4910.  
**Tucker**, 6-9 p.m. Café Aroma.  
**"Easy A,"** 7 p.m. Rustic Theatre.

**Friday, Oct. 15**

**Willy B.**, 5:30-8:30 p.m. Arriba Mexican Restaurant.  
**Family Weekend Exhibition: Opening Reception**, 6 p.m. Parks Exhibition Center. Show runs through Oct. 29.  
**Sandii Castleberry, Paul Carman & Don Reed**, 6-9 p.m. The Creek House.  
**Creative Writing Reading**, 7:30 p.m. Parks Exhibition Center.  
**Karaoke**, 8 p.m.-midnight. Jo'An's Restaurant.  
**Karaoke**, 9 p.m.-2 a.m. Bone Daddyz.

**Saturday, Oct. 16**

**Fall Arts and Crafts Fair**, all day. Hamilton Museum, Anza.  
**Live Music**, 8 a.m.-5 p.m. Idyllwild Tea Company.  
**David Jerome**, 9 a.m.-noon; **Desert Rose**, 1-3 p.m. Café Aroma.  
**"Native Plants for High Elevation Western Gardens,"** 10 a.m. Caine Learning Center.  
**"Autumn Splendor" Quilt Show**, 10 a.m.-4 p.m. Idyllwild Elementary School Gym.  
**Living Free Animal Sanctuary 30th-anniversary: "It's All About the Animals,"** with emcee **Fritz Coleman**, 10 a.m.-5 p.m. Living Free Animal Sanctuary.  
**Native Plant, Seed, and Bulb Sale; Gardening Presentations**, 11 a.m.-4 p.m. Idyllwild Area Historical Society.  
**Horseshoe Tournament**, noon. American Legion Post 800.

**Tie Dye Workshop & Parking Lot Party**, 2-7 p.m. The Chakra Shack.  
**Idyllwild Arts Academy Orchestra Concert: Peter and the Wolf**, 4 p.m. IAF Theatre, Idyllwild Arts.  
**Sandii Castleberry & Paul Carman**, 5:30-8:30 p.m. Arriba Mexican Restaurant.  
**An Evening of Comedy with Fritz Coleman**, 8 p.m. Idyllwild Pizza Company.  
**Change Required**, 9 p.m.-2 a.m. Bone Daddyz.

**Sunday, Oct. 17**

**Live Music**, 8 a.m.-5 p.m. Idyllwild Tea Company.  
**Ernesto Alé**, 9 a.m.-noon; **Hojo and the Halfnotes with Kevin Hamby**, 1-3 p.m.; **Skeleton Crew**, 6-9 p.m. Café Aroma.

**"Autumn Splendor" Quilt Show**, 10 a.m.-4 p.m. Idyllwild Elementary School Gym.  
**"Climbing Tahquitz Rock,"** Historical Exhibit, 11 a.m.-4 p.m. Idyllwild Area Historical Museum.  
**Musical Theatre Cabaret**, noon. Rush Hall.  
**Idyllwild Arts Academy Orchestra Concert: Peter and the Wolf**, 2 p.m. IAF Theatre, Idyllwild Arts.

**Monday, Oct. 18**

**Children's Storytime**, 10:30 a.m. Idyllwild Library.  
**Sandii Castleberry and Willie B.**, 6-9 p.m. Café Aroma.

**Tuesday, Oct. 19**

**Jazz Night**, 6-9 p.m. Café Aroma.

**Healthy Lifestyle class offered**

Brenda Scherlis, Idyllwild Health Center's nurse practitioner, will lead a Healthy Lifestyle class, at 6 p.m. every Tuesday at the Silver Pines Lodge located at 25955 Cedar Street.



**20% OFF EVERYTHING**

**This weekend only**

Beautiful Idyllwild, CA

Oakwood Village • 54425 N. Circle Dr.

amanda@idyllwildartisans.com  
 or 951-659-9091 for more info.

**Trivia test**

**Music:** What pop-rock band had a Grammy-winning song called "If You Leave Me Now"?

*Answer: Chicago*

**BONE DADDY'Z**

**NEW ORLEANS STYLE ~ PUB & GRILL ~**

**Monday Night Football Specials: \$1 off all Beer & \$1 Tacos**

5-9 p.m.

**Live Entertainment: Every Friday, 9 p.m.-2 a.m.**

**KARAOKE NIGHT**

Sat., Oct. 9, 9 p.m.-Close

**SATELLITES**

Sat., Oct. 16, 9 p.m.-Close

**CHANGE REQUIRED**

**Hours:** Thursday & Sunday, Noon - 10 p.m.  
 Friday & Saturday, Noon - 2 a.m.  
 Kitchen open 'til 1 a.m. Fri. & Sat.  
 Monday-Wednesday, Closed

**LOCATED IN THE FORT ~ 659-2600**

**Idyllwild Tea Company**  
 featuring **Oma's European Bakery**

54241 Ridgeview Dr.  
 (951) 659-0263  
 www.idyllwildteacompany.com

Mon. - Fri. 8 a.m. - 3 p.m.  
 Sat. & Sun. 8 a.m. - 5 p.m.  
 Wine Walk Gallery

- Breakfast/Lunch All Day
- Beer & Wine
- Organic Teas & Coffees
- Art Rental & Sales Gallery
- Gift Shop
- Cozy & Comfortable
- Outdoor Patio Seating
- Live Music on Weekends
- Free Wi-Fi



# 30 years of Living Free

BY MARSHALL SMITH  
STAFF REPORTER

On Saturday, Oct. 16, Living Free, the “no-kill” animal sanctuary in Mountain Center, celebrates 30 years of rescuing, rehabilitating, fostering and providing lifetime homes for cats and dogs facing euthanasia in public shelters.

Founded by Emily Jo Beard in 1980, the 153-acre shelter was among the first “no-kill” facilities. It moves proudly into its fourth decade with a day-long party, which celebrity weatherman Fritz Coleman of KNBC in Los Angeles and KNSD in San Diego will emcee.

According to Living Free Public Relations Specialist Clay Helgren, the anniversary party is autumn-themed, with hayrides and a pumpkin patch. Families can purchase Halloween pumpkins and, if they choose to, carve a winning entry as part of Living Free’s Pumpkin Carving Contest. Three family winners will take home cash prizes.

In addition to pumpkin pleasures, the celebration features arts, crafts, vendors, a silent auction and raffle prizes, an antique car show, face painting and

clowns, live demonstrations including sheepherding, dog obedience training, a presentation by Dr. Michelle Stone, (an animal behaviorist who will discuss animals with behavioral issues), live entertainment and food. Idyllwild’s Rotary Club will grill hamburgers, veggie-burgers and hot dogs and Tim Madison will host a chuck wagon with chicken and tri-tip. For the sweet tooth, Koala Ice will be serving shaved ice and novelty ice creams. Idyllwild’s Candy Cupboard will be selling caramel apples and other treats.

Ken Dahleen will provide stage and sound for entertainment that includes desert singers and nightclub entertainers Carol Kamenis and Laurie Deane.

Fritz Coleman will present a comedy show at 8 p.m. Saturday, Oct. 16 at the Idyllwild Pizza Company. Tickets, which are \$15, go on sale Monday, Oct. 11 at the Pizza Company. Part of the proceeds benefit the community playground construction at the Idyllwild Community Center site. Coleman is donating his fee to Living Free.

Living Free Animal Sanctuary is located at 54250 Keen Camp Road, Mountain



The rain did not deter members of the Inland Empire Jaguar Club from making the annual trek to Idyllwild to be shown at the Idyllwild Inn on Village Center Drive. A few of the later models are shown here. According to club members, more than 40 Jaguars were displayed.

PHOTO BY CID CASTILLO



On Sundays, Jo’An’s Restaurant features the unmistakable voice of **Jerome Robinson**, who is best known for his performances with the *Second Generation Platters*. Jerome is one of very few authorized to perform the original *Platter’s* songs.

PHOTO BY CID CASTILLO

Center. For more information, contact [www.living-free.org](http://www.living-free.org), [chelgren@living-free.org](mailto:chelgren@living-free.org), or call (951) 659-4687. There is a \$5 suggested donation per adult.

Marshall Smith can be reached at [marshall@towncrier.com](mailto:marshall@towncrier.com).

**MOUNTAIN RESTAURANT** telephone 951.659.1974  
[www.themountainrestaurant.com](http://www.themountainrestaurant.com)  
26290 Idyllwild Rd. (Hwy 243)  
Idyllwild, CA 92549

Open for **Dinner** 4:30 - 9 p.m.  
Thursday - Monday

Open for Sunday **Brunch** 10a.m. - 2p.m.

- **Monday locals 2 course special** — Price and special will be listed on Web site Sunday evening.
- **Thursday — 1/2 Price Off entire wine list**

The ingredients are prepared with passion, plated with attention to detail, and served with honor and care in a comfortable environment.

Call or Email for Reservations  
[people@themountainrestaurant.com](mailto:people@themountainrestaurant.com)

## COLONEL BO'S BACKSWING



It must have been 1961. We fighter pilots were flying the hot, supersonic F-101 out of a misty Royal Air Force Base in England. A normal flight: Loaded with a virtual hydrogen bomb we would fly out over Europe “on-the-deck,” then somewhere over the Balkans we would toss the “bomb,” on our target, climb to 40,000 feet and return to base. To break the routine of fly, fly, fly, I had discovered golf. In East Anglia there are literally dozens of beautiful golf courses and “Yanks” (still WWII heroes) could then play free. We played a lot. In fact, daily. One day my general called me in: “Major, last Tuesday we had an emergency flight and needed a pilot. I found you were on the golf course. Now, I realize that you fighter pilots consider yourselves professional athletes, but I need to know. Are you a professional golfer or a professional aviator?” That Saturday, I sold my clubs at a yard sale in Ipswich. Exactly fifty years later — Last Monday, I got up at 1 a.m. to watch the RYDER CUP, the biannual golf battle between the best American golfers and the best Europeans. Well, we got beat. But just barely, and on the same golf course where I played my very last round — beautiful Celtic Manor in Wales — Read the whole story at B’s MOUNTAIN of BOOKS in Idyllwild — Bo’s War Stories.

### Art Walk & Wine Tasting

Visit us at the Beginning or End of your Tour

Quiet Creek Living Room Gallery  
Saturday, October 9 2-5 pm



A mile south of the village.  
Six acres on Strawberry Creek.  
Brilliant paintings. Fantastic ceramics.  
Stunning photography and more.

Indescribable wine and music.



**Quiet Creek**  
26345 Delano Dr  
Highway 243 to Tollgate Road,  
1st right on to Delano Dr.





# Steele returns home in the money

BY JACK CLARK  
PROFESSIONAL GOLF CORRESPONDENT

Brendan Steele added another top 20 finish to his Nationwide Tour success — his tenth of this season — at the Soboba Golf Classic in San Jacinto last week.

With his 11-under-par (70-67-65-71) 273 total, he finished in a tie for 16th place. Steele earned \$16,500 in prize money, which boosted his official earnings for the year to nearly \$141,000. This moved him up to 34th on the official money list. If he finishes the tour's season among the 25 Nationwide Tour top money earners, Steele would advance to the PGA Tour for 2011.

The Idyllwild native's best round came on Saturday. Steele posted eight birdies against only two bogeys for a six-under-par 65 that moved him well up the leaderboard to a tie for 6th place going into Sunday's final round.

However, that fourth round was frustrating. Steele missed several birdie putts by an inch. He began the 18th and final hole at even par for the day.

Just as he did at the Soboba tournament in 2009, Steele produced a crowd-thriller on the 72nd hole. On the 521-

yard 18th, he blasted his drive to the right side, carrying a large sand bunker, splitting a pair of palm trees, and cutting across the dogleg into the center of the fairway. Protecting the front edge of the green, he then flew a pitching wedge over the pond and toward a pin that was placed only a couple of yards onto the green's front surface. The ball dropped practically on top of the flag and stopped instantly, leaving him only a 10-inch tap in for an eagle three.

Steele's Soboba performance tightened his grip on a 40th-or-above ranking on the Nationwide Tour money list. This result would give him a bye into the final stage of Q School, the PGA Tour qualification tournament during the off season and an entry into this month's season-ending Nationwide Tour Championship in South Carolina, either of which could launch him onto the 2011 PGA Tour.

Steele now is about \$22,000 shy of the current 25th place holder on the money list. Including the Tour Championship, he still has three more tournaments in which to improve his money list standing.

This week Steele heads east for the \$500,000 Chattanooga Classic at the Black Creek Club in Chattanooga, Tenn. The winner's share of that purse will be \$90,000.



Grandfathers for Golf and the Soboba Golf Classic encouraged professional golfers to help local children develop good golf skills. Here, **Brendan Steele** is working with 6-year-old **John-John Britt** of Temecula at the kid clinic. PHOTO BY JACK CLARK

## My week at the Soboba Classic

BY JACK CLARK  
PROFESSIONAL GOLF CORRESPONDENT

The Soboba Classic was added to professional golf's Nationwide Tour only last year, and this year's second-annual version was even better.

Monday and Tuesday were allotted for practice rounds for Nationwide Tour tournament players, which spectators could attend.

Tuesday's special event was a junior golf clinic sponsored by Grandfathers for Golf (GFG), an organization whose purpose is "to attract young people to the game of golf, provide opportunities to enhance their skills in the game, and promote their continued interest and involvement."

Native Idyllwilder Brendan Steele, a Nationwide Tour professional, is a member of the board of directors of GFG. Tony Viola, GFG's president, coined the name

"The Steeleheads" to describe those in the organization who cheer on Steele's developing professional golf career.

This year at the junior golf clinic, Steele worked with 6-year-old John-John Britt of Temecula, who avows that Steele is his favorite player. Before their session was over, Steele had the talented youngster hitting drivers off the deck.

Many people are not aware that professional golf tournaments constantly raise money for charities. Wednesday's two Soboba Casino Charity Pro-Am tournaments are fundraisers featuring five-somes, which are comprised of a Nationwide touring pro and four amateurs who pay entry fees. The 2010 beneficiary of these pro-ams was The V Foundation For Cancer Research, a 17-year-old organization founded by former North Carolina State

See Soboba, page 30



**Brendan Steele**, Idyllwild, at the 2010 Soboba Classic. He is well known for his high finish. PHOTO BY JACK CLARK

**AVON**  
Skin Care, Gifts, Cosmetics  
**LARRY EDWARDS**  
Independent Sales Representative  
Serving Idyllwild and Palm Springs  
**760-831-3299**  
[www.youravon.com/larryedwards](http://www.youravon.com/larryedwards)  
[pinkiemeringue@yahoo.com](mailto:pinkiemeringue@yahoo.com)

**GRINER CONSTRUCTION**  
**Terry Griner**  
General Building & Engineering Contractor  
*License# 530771 A&B*  
P.O. Box 1692 - Idyllwild, CA 92549  
951-659-5660 Office 951-659-0053 Fax

**Valley**  
**Auto Refinishers Inc**  
Collision and Restyling Specialists  
**Have you been in an accident?**  
*Lifetime guarantee on work for as long as you own the car.*  
**Come see mountain resident Bob Skaug.**  
**Collision Repair:**  
All Makes & Models  
Expert Color Matching  
Auto-Trucks-RVs-Boats  
Free Estimates  
Quick Honest Service  
No Pressure, Friendly Service  
**ALL Insurances Accepted!**  
**FREE Estimates**  
1327 N. Juanita St. • San Jacinto  
**654-9480** fax 654-9467

**Idyllwild Barber Shop**  
walk-ins welcome appts. available  
26500 Hwy. 243  
Idyllwild, CA 92549  
**951-216-4151**  
[idyllwildbarbershop@yahoo.com](mailto:idyllwildbarbershop@yahoo.com)  
Reg. cut \$10 Senior cut \$8  
Fades \$11 Norelco \$12  
Kids \$10 Hippies \$15

**Too much weight that won't budge?**  
**Dr. Dunn has Solutions—Naturally!**  
**Naturopathic Health Care**  
**Dr. Jon Dunn,**  
Licensed Naturopathic Physician  
OPEN Thurs. & Fri. 9—4 by appointment  
54790 N. Circle Dr. (951) 659-6124 [www.DrJonDunn.com](http://www.DrJonDunn.com)





The Never Was were the Division B volleyball winners. Here **Robert Priefer, Wyatt Priefer** (returning serve) and **Jessica Priefer** are seen playing. Not shown are teammates **Brennen Priefer** and **Rowland Perales**. PHOTO BY J.P. CRUMRINE



The Hilltoppers won the Division A 150 plus Volleyball Tournament. **Dan Hitchcock** sets up a return from teammate **Misty Hitchcock** or **Dawn Sonnier**. Not shown is the fourth mate, **Jason Sonnier**. PHOTO BY J.P. CRUMRINE



**Holly Guntermann**, Idyllwild School physical education teacher, was pitching sportsmanship and philanthropy last weekend. The 2nd Annual Fall Classic (softball and volleyball tournaments) benefited Idyllwild School's middle school sports and Town Hall's recreation program. PHOTO BY J.P. CRUMRINE



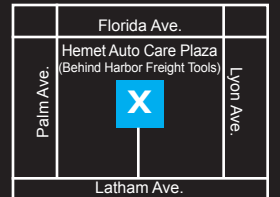
**Bill Whitman**, Idyllwild, (left) and **Javier Gomez**, the reigning triathlon world champion. Gomez finished 2nd in Sunday's Los Angeles Triathlon race. PHOTO COURTESY OF BILL WHITMAN



The NYFA (New Year Free Agents) were the winning team in the Fall Classic Softball Tournament. Back row: **Brennen Priefer, Sonny Vogt, Nicky DeLeone, Bud Vogt, Jason Sonnier, Nick DeLeone**. Middle Row: **Jessica Priefer, Kristina Vogt, Maria Loutzenhiser, and Dawn Sonnier**. Front row kids: **Payton Priefer, Kierstynn Vogt, Riley Vogt, Gianna DeLeone, Katelyn Sonnier, and Cole Sonnier**. PHOTO BY KATHY LEWIS

## Advance Muffler

- MUFFLERS
- CONVERTERS
- HIGH PERFORMANCE
- EXHAUST
- 4" DIESEL SYSTEMS



**951.766.8843**

1200 W. Florida Ave. Ste. YZ  
Hemet, CA 92543



### FLU SHOTS NOW AVAILABLE HERE

Go to [www.IdyllwildPharmacy.com](http://www.IdyllwildPharmacy.com) to save with our monthly specials, refill prescriptions and find out more about your neighborhood pharmacy.  
54391 Village Center Dr. • (951) 659-2135

Fall Checkup  
**\$45.00**

Call Idyllwild Heating  
659-HEAT  
54730 North Circle Drive

Applies to furnaces, wall heaters and free-standing gas stoves in the Idyllwild area  
Does not include parts or filters  
Lic.#676943

## 2010 Winter Survival Guide

The Idyllwild Town Crier's guide to keeping safe and warm this winter.

This special section contains important advice on preparing your home, your land, your vehicle, and your family for the challenges of living and traveling in winter conditions.

Articles by organizations offering helpful safety information, businesses advertising winter services and products to keep you warm and your house and land safe from fire and ice, and emergency advice and phone numbers to call when you need help, will make this an insert the Town Crier readers will keep for reference all winter long.

This special pull-out section will be inserted in the November 11 edition of the Town Crier. It is also published as a stand-alone piece that is distributed free online and throughout the Mountain Communities.

**All ads are in Full Color at no extra charge.**  
**AD DEADLINE IS OCT. 27**  
Call Shane at the Town Crier for rates  
**(951) 659-2145**

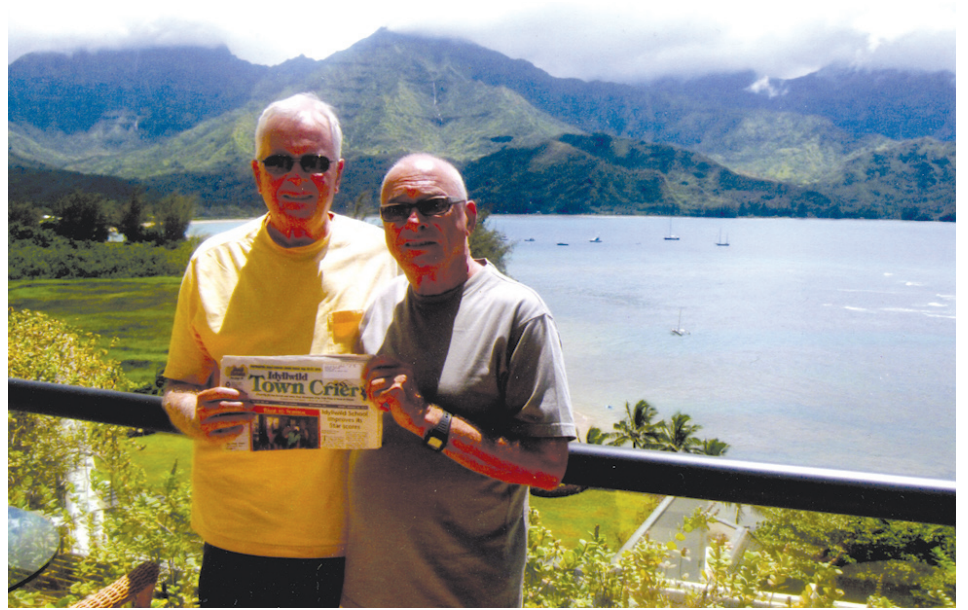
**CSRC** Cremation Society of Riverside County  
Burial or Cremation • Dignified Low Cost Alternative  
Family Owned & Operated  
We Accept All Funeral Plans  
[www.cremationsociety.com](http://www.cremationsociety.com)  
Member Cremation Association of North America  
24 Hours  
**951-928-9108 OR 800-922-7773**  
FD-1445





**Kristin Ethier** of Idyllwild and **Jamie Giannioses** of Bend, Ore., had a wonderful road trip through the eastern Sierras, including time to soak in the hot springs outside of Bridgeport, Calif., and wander the trails below Mount Shasta (in the background).

PHOTO COURTESY OF JAMIE GIANNIOSES



**Dick Dorisse** and **Morry Copeland** of Idyllwild needed the *Town Crier* to navigate the Hawaiian islands. Here they are at the Princeville resort on the island of Kauai.

PHOTO COURTESY OF DICK DORISSE

### Living Free 30th anniversary event

Living Free Animal Sanctuary is celebrating its 30th anniversary of rescuing cats and dogs from shelter euthanasia from 10 a.m. to 5 p.m. Saturday, Oct. 16.

The all day, fun-filled event will be hosted by Fritz Coleman, local NBC weathercaster. Living Free is seeking entertainers passionate for the cause of saving the innocent lives of cats and dogs facing euthanasia to perform at this celebration event. Vendor booth spaces and sponsorship opportunities are still available. Call (951) 659-4687 for more information.

### Actor Harry Shearer in IA production

Actor and comedian Harry Shearer ("Spinal Tap," "The Simpsons," "A Mighty Wind") will join the renowned Idyllwild Arts Academy Orchestra for a production of the classic favorite "Peter and the Wolf" by Sergei Prokofiev. The Saturday, Oct. 16 performance is for Idyllwild Arts families only, but the Sunday, Oct. 17 performance, which begins at 2 p.m., is open to the public.

### Fall Arts & Crafts Fair

On Saturday, Oct. 16, the Hamilton Museum on South Contreras Road in Anza will be hosting the annual fall Arts & Crafts Fair. Crafts of all kinds will be available for purchase, including pottery, wood carving, purses, jewelry and weaving. Harriet Bergman Costo will be providing some musical entertainment on the pump organ, and the Apple Cider Queen will be cranking out delicious apple juice on a cider press. Other possible entertainment may be gun fighters, butter-making, weaving and spinning demonstrations, and strolling minstrels.

## Real Estate



**Marge Muir**

Broker-Owner

Cell: 951-440-0114

Office: 951-659-8335

margemuir@idyllwild.com

DRE#0635890

# Muir's Mountain Realty

**Idyllwild Office**  
26115 Scenic Highway 243  
Suite A  
Idyllwild, CA 92549  
www.muirsmountain.com



#### There's nothing NOT TO LIKE

From the covered entry, surrounding decks and a light and airy interior. 3 lovely bedrooms, 2.5 baths, real dining room, large living room, fireplace, garage and so much more. On Marion Ridge. On approx. 1/2 acre. (2 lots.) MLS#5077 \$349,000

**A True A-Frame.** Well built, lots of beautiful wood in the interior, a spiral stairway, balcony off the very large bedroom, full bath, decks, large fenced yard. In Fern Valley. Now just **\$238,000** MLS#4276

**Coulter Pines Residential Park** **\$69,900** for the perfect getaway. 1 bedroom, like new, deck and large open area for possible addition. Park fee is only \$150/mo. Well managed, water, trash and some snow removal included.



#### Peace and Serenity reign here!

This is a picture-perfect home. Garden setting. Warm and wonderful home with 3 bedrooms, 3.5 baths, 2-car garage. You can find this home on Idyllmont Drive ... offered at **\$419,000** MLS#5159



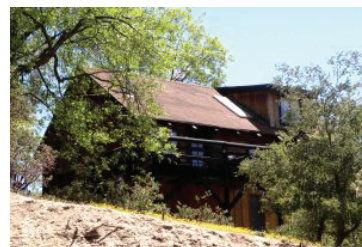
#### MOVE-IN READY in every detail

Wood floors, large kitchen with dining area. Two bedrooms, 2 baths, den, decks and a detached 2-car garage. More storage than one may ever need. Well priced at **\$219,000**. Single story and it's ready.



#### You'll like the privacy

The home is just a short distance from the Village but feels away from it all. Updated throughout with large new kitchen, and more. Over 1/2 ac. fenced yard. On Pine Crest Ave. Asking **\$265,000** MLS#5213



#### Bring your Lincoln Logs

This is a real log cabin with views on large lot and ready for fun. Inside open feeling with three bedrooms, two baths, airtight wood stove and furnished. Corner lot w/view. Great price at just **\$279,000**. MLS#5173



#### BRAND NEW

**New price of just \$239,000**

Be the first to enjoy this lovely new home. Every room is very spacious. Corner fireplace, all new high standard appliances, 2.5 baths, 3 bedrooms, 2-car garage. Approx 2,100 sq. ft. City light views from the decks. Originally priced at **\$385,000**. MLS#4823

#### LOTS AND ACREAGE

**New listing** On Idyllmont Drive, near the Arts Academy a near-level lot with a gentle rise to give a bit of character. 100 ft. frontage. Approx. .40 acre. Asking **\$69,000**

**12 acres** on the outer edge of Idyllwild with panoramic views. Owner financing may be available. Asking **\$250,000** MLS#4269

**Incredible view lot** on Double View Drive. One acre, and the price includes architectural plans for an approx. 1,200 sq. ft. home. Offered for **\$155,000**

**Pinewood 2** great lots with access to the backcountry and surrounded by National Forest. 1 with water service available, owner financing available, asking **\$89,000** MLS#4702

**Also in Pinewood**, over 1/2 acre, level building site. Asking **\$47,500**

**Two lots with** views offered as a package for just **\$45,000**, updated perc test. They're ready.

**Seasonal Creek & Mt. Top Views** from this just-listed lot. Perked & ready. **\$48,900**



#### Remember When?

You sat around the Radio to hear about the world? This home will remind you of those days. Two story, 3 bedrooms, bath, large living room, separate dining. Need some work? Yep. Come see. Asking **\$149,000**. Nice level lot. MLS#5259





# A Taste of Idyllwild Lots to choose from, give me a call!

**Dora  
Dillman**

**Cell: (951) 288-5604**  
dora@lovethehill.com



Village Center Office



**SHORT STROLL TO TOWN**

Immaculate, charming gambrel-style cabin on level, easy-access lot. 2 story, 2 bedroom/1 bath classic with new flooring, appliances and interior paint. Covered entry opens to large flowing living area with beamed ceiling, pantry and a corner Franklin stove. 2 spacious upstairs bedrooms with closet space. Wraparound deck. Room for an RV! MLS#5301 **\$164,500**



**WELCOME HOME!**

Large bedroom and huge, high loft with high ceilings and 1.75 baths. Airtight woodstove heats entire house. Lots of closet space plus extra storage under house. Huge fenced backyard. **\$189,000 Seller financing available.** MLS#4490



**MOVE-IN READY**

Light and airy with wonderful knotty pine cabin flair. Entry level has vaulted ceilings, woodstove, sliding doors to deck with sunset views. Main level has 1 bdrm. and full bath. Upstairs has large bedroom, loft and .5 bath with laundry hookup. On 2 parcels, just under .5 acre. MLS#5208 **\$245,000**



**IMMACULATE CONTEMPORARY**

Vaulted ceiling living room with fireplace. Bright kitchen/dining. Main level has 1 bdrm, bath, large deck and fenced backyard. Upstairs has 2 bdrms & bath. Carport for RV. Circular drive. Fruit trees abound. Drip irrigation. MLS#4851 **\$269,000**



**COMPLETELY RENOVATED**

This home has it all! Main level has living room, large kitchen, bedroom w/.75 bath and laundry. Upstairs is large loft w/wood burning stove, master bedroom w/bath. Natural cedar and redwood paneling. Award-winning decks. Large .31-acre corner lot. MLS#5114 **\$329,900**

**TWO ON ONE IN FERN VALLEY**

Two historic charmers on one lot in Fern Valley. Both come fully furnished, right down to the linens, and sleep three people in each. With full baths and kitchens, these two cabins are great for rentals or a family compound. Feel the Old Idyllwild cabin charm with its knotty pine wood and beautiful rock fireplace, while enjoying the upgraded kitchen and bath. Serene setting, with your own seasonal creek in the backyard, allows you to enjoy the true outdoors, set back from the street amongst the tall trees. Jacuzzi tub, laundry, decks and wood storage all add to the comforts you desire. Easy walking distance to town center in just .8 of a mile. Back cabin presently rents for \$500 month to month. Front cabin is established with www.vrbo.com as a successful vacation rental @ \$115/day. Seller is willing to finance, submit terms. MLS #5224 **\$215,000**



**SHORT SALE SPECIALS**

**LARGE FAMILY HOME**

Lots of potential. 2 bdrms, full bath on the entry level with flowing living area and back deck looking towards the mountain peaks. Lower level has huge family room plus bedroom and 1/2 bath and separate entrance. Two large sheds in the backyard, carport at street with walkway to the house makes it wheelchair accessible. MLS#5170 **\$152,000**



**SITTING HIGH ABOVE THE VALLEY**

High vaulted ceiling in living room with massive flagstone fireplace, dining area and pass-through kitchen. Master suite with 3/4 bath and private deck. 2nd bdrm includes ample storage and comfort. Covered deck, lower entry with access to 1-car garage with workshop. 1-bdrm apt. off the garage. Over a full acre. MLS#5197 **\$249,000**



**EXQUISITE SECLUDED COMPOUND**

Unique compound without outstanding views from peak to ocean. Main house completed in 2005 has open main level living area and bright kitchen, loft office, master suite, plus lower level bedroom/bath and huge workout room. Efficient radiant floor heating, AC, steam shower, reclamation water storage systems. Second house is an old charmer, with stunning solarium, bedroom/bath and views. Studio. Separate garage. 1.48 acres. MLS#5270 **\$589,000**



**IDYLLIC MOUNTAINTOP SETTING**

Pure elegance. Great room with floor-to-ceiling windows & rock wall fireplace. Dining area has built-in wet bar and French doors opening to covered deck. Gourmet kitchen. Master suite plus two more bedrooms, three baths. Spectacular views. 2-car carport. Just over an acre w/ drought-resistant landscaping. MLS#5123 **\$795,000**





# Real Estate



**JoAnn S. Graham, CSEO**  
**Sue Westfall, ESCROW ASSISTANT**



**Mountain High Escrow**

Over 30 years of Escrow Experience

54545 N. Circle Dr. Phone: 951-659-1911  
www.mountainhighescrow.com



**stewart**  
title guaranty company  
A STEWART INFORMATION SERVICES COMPANY [NYSE: STC]



**ELLEN ANDERSON**  
Business Development



**Inland Empire Division**  
7065 Indiana Ave., Suite 100  
Riverside, CA 92506  
800-220-6886 Customer Service  
951-313-6750 cell • 800-637-2769 Riv.  
eanderson@stewart.com • www.stewartca.com




**TRISCHA CLARK**  
REALTOR® Associate

54295 North Circle Drive  
P.O. Box 243, Idyllwild, CA 92549  
E-mail: trischa@idyllwildrealtor.com  
www.idyllwildproperty.com

Bus: (951) 659-2125  
Cell: (951) 288-8789  
Fax: (951) 659-2127

**Ron Schingo**  
Realtor-Associate

Cell: (951) 212-9172  
ron@lovethehill.com  
www.lovethehill.com

**Call me!**




**Linda Allen**  
"The Road Runner of Real Estate"  
Idyllwild Realty  
Log Cabin Office  
54230 North Circle Dr.  
**In the ♥ of town**  
**(951) 452-9327**



**True Mountain A-Frame**



3 BR, 1 BA, basement with Swedish FP and furnished! Cedar interior, rock FP in LR and spacious storage shed. Walk to FV corners and town. Large lot. MLS#5166 **\$217,000**

**Village PROPERTIES** MLS REALTOR

**951-659-2114** **IdyRealtors.com**

*The REALTORS you recommend to friends.*  
**Jackie Kretsinger and Barbara Hunt**  
See our WebCam at wesellidyllwild.com

**WWW.TOWNCRIER.COM!**



To have your Real Estate Ad appear in the Idyllwild Town Crier's Real Estate Section, contact Grace Reed or Shane Fender at the Town Crier at (951) 659-2145.




**Idyllwild's #1 Real Estate Company "Year After Year"**

**Broker: Shane Stewart**  
office@lovethehill.com

**North Circle Office**  
(951) 659-2125 • (800) 760-2816  
Jim Billman, Maggie Morphett, Steve Taylor, Trischa Clark, Wayne Johnston

**Village Center Office**  
(951) 659-3425 • (866) 680-3425  
Pete Capparelli, Dora Dillman, Sheila Zacker, Christina Stewart, Lucie Stenseth, Emily Pearson, Gary Budnick, Joe McNabb, Jackie Wagner

**Log Cabin Office**  
(951) 659-4673 • (800) 760-1884  
Bill Sperling, Linda Allen, Ron Schingo, Tiffany Raridon

**THIS MONTH'S NEW LISTINGS**



**STROLL TO TOWN**  
Two bedrms., 1 ba. New flooring, appliances and paint. Wood beams. New wraparound deck. 8x10 storage shed. Room for RV. MLS#5301 **\$164,500**



**OPEN FLOOR PLAN**  
Great 2 bdrm., 1.5 ba. cabin. Open living room, eating area & kitchen. Large family room downstairs. Private in a quiet area. MLS#5300 **\$170,000**



**PRIDE OF OWNERSHIP**  
The Birdhouse Home. 3 bedrms., 2 full and a 3/4 bath. Guest studio with bath. Partially fenced. Carport. Snowplow friendly. MLS#5254 **\$199,900**



**BACKS COUNTY PARK**  
2 bedrms. Seasonal creek. Private rear deck. New hardwood flooring. Newer paint. Well maintained. Newer leach field. MLS#5294 **\$235,000**



**INVESTMENT**

**TWO ON ONE**  
Two historic cabins on one lot in Fern Valley. Fully furnished. Sleep three people in each. Serene on seasonal creek. Jacuzzi tub. Great rental history. MLS#5224 **\$215,000**



*Congratulations on the 13th Annual Art Walk & Wine Tasting*



**INVESTMENT**

**INCOME PRODUCING**  
Duplex or Granny Quarters. 1 unit w/2 beds, 2 baths, laundry, hardwood floors and FA. 2nd unit w/1 bedroom, 1 bath w/living room & sun porch. Walk to town. MLS#5297 **\$250,000**

**SHORT SALES**



**LARGE FAMILY HOME**  
3 bedrms. Large family room. Two large sheds. Carport @ street level. Great vacation rental opportunity. MLS#5170 **\$160,000**



**HIGH ABOVE THE VALLEY**  
Large Tudor home. Master suite with 3/4 bath. Second bedroom includes ample storage. Wraparound covered deck. One bedroom apt off garage. Over a full acre. MLS#5197 **\$260,000**



**PERFECT WEEKENDER**  
Close to town w/many upgrades. Move-in ready. Two bedrooms + loft. Mostly furnished. Dog run. MLS#5277 **\$249,000**



**COZY 3 BEDROOM**  
Great 2-story w/main level kitchen, bath, laundry and living area. Every bedroom has private deck. Separate family room. Carport. MLS#5288 **\$249,000**



**PRIDE OF OWNERSHIP**  
One level. A gardener's delight. Large living room. 2 bedrms. Dining. Den. Fenced rear yard. Parking galore w/circular drive. MLS#5298 **\$249,900**



**STUNNING REMODEL**  
Large picture windows. High beam ceilings. New entry & front porch, doors, appliances, counters and paint. 3 bedrms. Oversized 2-car garage. MLS#5108 **\$395,000**



**VIEWS**  
Three bedrooms. .4 acre. Stone fireplace. Separate guest quarters. Attached garage. Fenced. MLS#5069 **\$250,000**

**Over 100 more listings. Visit our Web site: [www.lovethehill.com](http://www.lovethehill.com)**



# Idyllwild man helps the homeless

BY BETH NOTTLEY  
STAFF REPORTER

Every Sunday — a day most people think of as a day of rest — Idyllwild resident Chris Rockwell travels through the desert communities below the Hill to bring needed items to homeless people. On his journey, he delivers more than materials goods to the people that he calls “forgotten by most everyone.” Rockwell said, “I want to show them that someone cares.”

Rockwell said the living conditions faced by the desert area’s homeless population are brutal. “These people are exposed to harsh desert elements every day. In the daytime, it is scorching hot and nights are often bitter cold.”

Worse still, Rockwell said, is the isolation faced by these people, who are shunned by society and even by their own families. “They’re depressed,” Rockwell said. “Their self-esteem is gone.”



**Chris Rockwell**

Each week, Rockwell spends seven hours on his route, visiting with about 50 people, handing out necessities such as shoes and tarps. “I take the time to stay and talk,” he said. “The more I get to know these people, the more I become their friend.”

Rockwell talked about some of the people he has gotten to know in the nine months since he started helping the homeless. He described Sammy, who asked for books to read. “Sammy told me he had been an alcoholic so long that he couldn’t remember

not being one,” Rockwell said. Sammy is now in a rehabilitation facility.

Kim is a young woman who has muscular dystrophy and relies on a wheelchair. Kim lives in a shack with no utilities. “When I first met Kim,” Rockwell said, “I wondered who protects her. I found out that they [the homeless] stick together and watch out for each other.”

Bobby is a veteran who has been homeless for some time. Rockwell said he has found out that Bobby “is a very intelligent and interesting guy.” The message that Rockwell wants to get out is that “homeless people are the same as everybody else. All people have problems.”

When he first started his mission of helping the homeless, Rockwell wondered if he’d be in the way of other people and organizations providing assistance. “I found out that very few people are helping them, and I think these people need and deserve help,” he said.



**Sam, Ed and Robin** are sorting through clothes **Chris Rockwell** brought to their encampment. Sam and Ed are now at a rehabilitation center.

PHOTO BY CHRIS ROCKWELL

Rockwell, who has lived in Idyllwild since 1989 and owns Idyllwild Appliance with his wife, June, has formed an organization called “Helping the Homeless Now.” He said that a growing number of local people donate to his effort

in bringing needed items to the homeless people he visits. Rockwell has a very specific list of what those needs are and are not. “People usually think of food and want to give canned goods, but canned goods are heavy and these people often walk for miles each day. They also usually don’t have cooking facilities,” Rockwell said. He said that individually wrapped food products and fresh fruit work best.

Rockwell said that he uses the monetary donations

he gets to buy food and other things from Costco, Walmart and dollar stores. Items that are particularly needed right now are tents, tarps, flashlights, batteries, sleeping bags, blankets and bungee cords. Bicycles are highly prized items as they provide transportation, Rockwell said. He purchases bikes from the HELP Center and Bud Hunt of The Bike Route fixes them up before giving them away.

The people who have [See Homeless, page 30](#)

## ARF

*Continued from page 1*

has launched a nationwide search for a veterinarian.

Contacting vet schools for avid interns, placing an ad with the California Veterinarian Medicine Association, and writing letters to vets are just some of the actions ARF members are taking to “position [them]selves to meet the needs of this community,” as ARF volunteer Shela Boynton puts it. “This outreach emphasizes that our community is looking, ideally, for a semi-retired vet who would like to relocate to Idyllwild, but would consider any other part-time or mobile doctor.” The search is preferably broad, gravitating from a local to national

scope, so that all possibilities can be addressed.

Once a potential veterinarian expresses interest, ARF will discuss with him or her what this community expects and what it is prepared to offer. “Our vet should be able to give shots and vaccines, test for heartworm, prescribe medication, [perform euthanasia], take care of general pet wellness, perform spay or neuter surgeries [if equipment becomes available], and handle emergencies,” writes Boynton.

At this point, ARF does not know what kind of funds or equipment a potential vet might have, so members are doing as much as possible, including opening an account at BBVACompass Bank for community par-

ticipation and to raise awareness and funding. As of now, a \$2,000 donation has been set aside with a matching donation promised, and guest living accommodations have been offered at a discounted rent.

Part of this undertaking involves the search for a workable location. Concurrent with their endeavor to raise adequate funds, ARF board members will be considering space rental as well as the purchase of a used mobile van for potential vets to utilize; both of these considerations depend on the community’s welcome aid. Ideally and more realistically, ARF would, at a discounted rent, procure a space to be furnished and made into a vaccine clinic.

In recent days, ARF has

already received responses from interested vets in the Orange County area, offering to visit Idyllwild from one to four days a month. The difficulty of attracting a part- or full-time doctor is very much existent and acknowledged by ARF, but any improvement in Idyllwild veterinary services, though perhaps slight, will be positive, supported, and met with gratitude.

This is a “community-wide endeavor,” Boynton says, “and we realize it will take a long-term commitment to fundraising.” ARF urges readers who have any suggestions to share them by contacting Shela Boynton at shelab@greencafe.com, 659-4772 or Maria Lehman at doorman9@verizon.net, 663-6466.

 **Idyllwild**  
Community  
Acupuncture

**Kristin Ethier**  
L.Ac., Dipl. OM  
idyllwildcommunityacupuncture.com

(951) 659-2500  
54445 N. Circle Drive  
P.O. Box 1985  
Idyllwild, CA 92549

Providing affordable care for the health of our community

**Jennifer McEwen**

**लपुवरा**  
**लाइइगडे**

951.659.4705

Heart and Hands Healing

Advertise your business on the  
**BIG SCREEN**  
at the Rustic  
Theatre!

**Pay just**  
**\$50/mo.**  
Three-month minimum.

**Call Shane Fender at the  
Town Crier for more info.**  
**(951) 659-2145**



# Chamber reinvigorated

By MARSHALL SMITH  
STAFF REPORTER

Under Mimi Lamp's presidency, the Idyllwild Chamber of Commerce, is on a roll, continuing the momentum that began to build immediately after the new board took over on July 1.

"Inclusive" is the term most apt to describe this board, with Board Secretary Julie Johnson, the designated networker, showing up at countless meetings of other organizations, most notably the Idyllwild Business

Roundtable (IBRT), to build connections and cooperate on projects.

The Chamber and the IBRT, along with veteran Tree Lighting activist Marge Muir, are lead organizers on the expanded Tree Lighting ceremony, now called Winterfest. The Tree Lighting ceremony on Thanksgiving weekend launches a celebration of holiday spirit that may extend into January to connect with the film festival. Johnson was a key player in the recent Lemon Lily Festival, and continues

that spirit of participation, inclusiveness and outreach.

The Chamber's numbers are rejuvenating. They have grown from a three-person board to an eight-member activist board that includes newest director Mike Lackey, manager of Jo'An's Bar and Restaurant, web designer Shawna Gustin, Lauren Devore, Nick Todd, Steve Moulton, Richmond Blake, Lamp and Johnson. In three months, membership has more than doubled from 38 to 85. Importantly, the previously anemic Chamber

treasury has grown to a relatively stable \$1,700.

Also, the board continues to ramp up its thinking and accomplishments, including introducing a new state-of-the-art, user-friendly website, an ongoing eBay auction, (the first of which netted the Chamber \$500), a board decision to use "green" technology to communicate with members, and an emphasis on using social media to expand the reach and influence of the Chamber.

Recently, Johnson took

a social media workshop in which she learned how to optimize search engine efficacy and how to use keywords and Meta tags to maximize members' marketing effectiveness. "We have 20 [member content] pages under construction," said Johnson.

In another break from the previous administration, Directors Blake and Todd attended the recent State of the County workshop held at the Morongo Casino Convention Hall. County Supervisors, including Third District Supervisor Jeff Stone, were on hand.

Director Moulton underlined that the Chamber website and promotional

materials will feature all local businesses, not just Chamber members. "We're not excluding any business," said Moulton. "We'll focus on our members and highlight them in promotional materials." Moulton and Lamp emphasized that this kind of inclusiveness gets back to nonmembers. "Now nonmembers are contacting us, wanting to join," said Moulton.

And, in a testament to volunteerism, volunteers staff the Chamber Visitors' Center six days a week from 12 to 3 p.m. every day but Sunday.

Marshall Smith can be reached at marshall@towncrier.com.

## Rest area closure

Because there is currently not an enacted State budget, the Department is unable to fund the contract for water testing at rest stops. Consequently, Caltrans District 8 will be forced to close Safety Roadside Rest Areas (SRRA) in Riverside and San Bernardino Counties, effective Friday, Sept. 24. Water testing is necessary to maintain safe drinking water for the public who utilize rest areas.

The rest areas to be closed are: I-10 - White Water SRRA; I-10 - Brookside SRRA; I-10 - Cactus City SRRA; I-15 - Valley Wells SRRA; I-15 - Clyde V. Kane SRRA; I-40 - John Wilkie SRRA; and I-40 - Desert Oasis SRRA.

## Fire Department open house

On Oct. 9 from 10 a.m.-2 p.m., the Idyllwild Fire Department celebrate Fire Prevention Week by having an open house for the whole family to experience. Visitors can tour the department and ask questions of speakers from the Burn Institute while munching on the complimentary hamburgers and hot dogs.

## Golf company to sell new irons

TaylorMade Golf Company has created eight individually engineered irons with exceptional design and playability. Better than their predecessor, the Burner 2.0 irons are easy-to-launch and distance-enhancing.

On Saturday, Nov. 6, at Marriott Shadowridge in Palm Desert, TaylorMade Golf Company will be providing the ultimate consumer experience for golfers looking to try the new irons. There will be skill contests and exclusive prizes, including a set of new Burner 2.0 irons. The event is free.

## New schedule for forest offices

The winter schedule for the Idyllwild Ranger Station, located at 54270 Pine Crest Ave., began on Oct. 1. Monday through Wednesday and weekend hours are 8 a.m. to 4 p.m., (closed noon to 12:30 p.m.). The Ranger Station is closed on Thursdays.

**Reach Over 6 Million Californians**



...in over 200+ community newspapers!  
One Order...One easy payment...they're waiting!

Contact (916) 288-6019; (916) 288-6010  
**www.Cal-SCAN.com**

## Art Walk & Wine Tasting

The 13th Annual Art Walk & Wine Tasting event, taking place from 2 to 5 p.m. on Oct. 9, will be an afternoon filled with exquisite art, special exhibits, delicious appetizers, festive music, and exceptional California wines. The Art Walk & Wine Tasting is the Art Alliance of Idyllwild's (AAI) largest event of the year, raising money for Idyllwild School's smARTS program and for Idyllwild Arts Academy scholarships.

Some examples of the wineries represented are Hart Winery, Stuart Winery, Mega Wines, Middle Ridge Winery, South Coast Winery, Wiens Winery, and Sunshine Mountain Winery.

For more info, call 877-439-5278 or visit artinidyllwild.com. Wine glasses can be reserved ahead of time through the Town Crier website (www.towncrier.com) or purchased at Idyllwild Realty on the day of the event.

## Astronomy lecture meeting

On Oct. 29 at the Portola Community Center in Palm Desert, the Astronomical Society of the Desert present a free lecture by Dr. Bruce Strathdee about the history of Hubble and its contribution to our understanding of the universe in a talk entitled, "A Journey Through Time with the Hubble Space Telescope." Pictures taken with the newly installed wide field camera will be highlighted. Portola Community Center is located at 45-480 Portola Ave, Palm Desert. Doors open at 7 p.m. and the talk begins at 7:30 p.m.

## Idyllwild Vote 2010

The Town Crier has launched a new website dedicated to covering the 2010 California election. This site offers comprehensive coverage and information on issues affecting Idyllwild and the entire state of California.

We will post published stories as well as stories which didn't make it into the Town Crier.

You'll be able to check out all the local and statewide races.

Go to [www.towncrier.com](http://www.towncrier.com)  
and click on **Election 2010 - The Hill**  
in the upper right-hand corner.  
**Idyllwild Vote 2010**

UNITED STATES POSTAL SERVICE® (All Periodicals Publications Except Requester Publications)		
1. Publication Title Idyllwild Town Crier	2. Publication Number 6 3 5 - 2 9 0	3. Filing Date 10/4/10
4. Issue Frequency Weekly	5. Number of Issues Published Annually 52	6. Annual Subscription Price \$29 in-county \$33 out-of-county
7. Complete Mailing Address of Known Office of Publication (Not printer) (Street, city, county, state, and ZIP+4®) 54295 Village Center Dr., P.O. Box 157 Idyllwild, CA 92549 (Riverside Co.)		Contact Person Grace Reed Telephone (include area code) (951) 659-2145
8. Complete Mailing Address of Headquarters or General Business Office of Publisher (Not printer) Same		
9. Full Names and Complete Mailing Addresses of Publisher, Editor, and Managing Editor (Do not leave blank) Publisher (Name and complete mailing address) Grace Reed, P.O. Box 157, Idyllwild, CA 92549 Editor (Name and complete mailing address) Same Managing Editor (Name and complete mailing address) Same		
10. Owner (Do not leave blank. If the publication is owned by a corporation, give the name and address of the corporation immediately followed by the names and addresses of all stockholders owning or holding 1 percent or more of the total amount of stock. If not owned by a corporation, give the names and addresses of the individual owners. If owned by a partnership or other unincorporated firm, give its name and address as well as those of each individual owner. If the publication is published by a nonprofit organization, give its name and address.) Full Name Complete Mailing Address Idyllwild Publications, Inc. P.O. Box 157, Idyllwild, CA 92549 Tindle Newspapers (USA) Inc. Same Sir Ray Tindle (81%) Same Robert Stiby (19%) Same		
11. Known Bondholders, Mortgagees, and Other Security Holders Owning or Holding 1 Percent or More of Total Amount of Bonds, Mortgages, or Other Securities. If none, check box <input checked="" type="checkbox"/> None Full Name Complete Mailing Address		
12. Tax Status (For completion by nonprofit organizations authorized to mail at nonprofit rates) (Check one) The purpose, function, and nonprofit status of this organization and the exempt status for federal income tax purposes: <input type="checkbox"/> Has Not Changed During Preceding 12 Months <input type="checkbox"/> Has Changed During Preceding 12 Months (Publisher must submit explanation of change with this statement) PS Form 3526, September 2007 (Page 1 of 3 (Instructions Page 3)) PSN 7530-01-000-9031 PRIVACY NOTICE: See our privacy policy on www.usps.com		
13. Publication Title Idyllwild Town Crier	14. Issue Date for Circulation Data Below 9. 23.2010	
15. Extent and Nature of Circulation		
a. Total Number of Copies (Net press run)		3,962
b. Paid Circulation (By Mail and Outside the Mail)		715
(1) Mailed Outside-County Paid Subscriptions Stated on PS Form 3541 (include paid distribution above nominal rate, advertiser's proof copies, and exchange copies)		759
(2) Mailed In-County Paid Subscriptions Stated on PS Form 3541 (include paid distribution above nominal rate, advertiser's proof copies, and exchange copies)		909
(3) Paid Distribution Outside the Mails Including Sales Through Dealers and Carriers, Street Vendors, Counter Sales, and Other Paid Distribution Outside USPS®		863
(4) Paid Distribution by Other Classes of Mail Through the USPS (e.g. First-Class Mail®)		0
c. Total Paid Distribution (Sum of 15b (1), (2), (3), and (4))		2531
d. Free or Nominal Rate Distribution (By Mail and Outside the Mail)		0
(1) Free or Nominal Rate Outside-County Copies Included on PS Form 3541		0
(2) Free or Nominal Rate In-County Copies Included on PS Form 3541		0
(3) Free or Nominal Rate Copies Mailed at Other Classes Through the USPS (e.g. First-Class Mail)		0
(4) Free or Nominal Rate Distribution Outside the Mail (Carriers or other means)		362
e. Total Free or Nominal Rate Distribution (Sum of 15d (1), (2), (3) and (4))		362
f. Total Distribution (Sum of 15c and 15e)		2893
g. Copies not Distributed (See Instructions to Publishers #4 (page #3))		1166
h. Total (Sum of 15f and g)		4,059
i. Percent Paid (15c divided by 15f times 100)		87
16. Publication of Statement of Ownership <input checked="" type="checkbox"/> If the publication is a general publication, publication of this statement is required. Will be printed in the <u>Oct. 7, 2010</u> issue of this publication. <input type="checkbox"/> Publication not required.		
17. Signature and Title of Editor, Publisher, Business Manager, or Owner Publisher/Editor <i>Grace Reed</i> Date <u>10/4/10</u>		
I certify that all information furnished on this form is true and complete. I understand that anyone who furnishes false or misleading information on this form or who omits material or information requested on the form may be subject to criminal sanctions (including fines and imprisonment) and/or civil sanctions (including civil penalties).		
PS Form 3526, September 2007 (Page 2 of 3)		







**Services**



**Josh & Noah Whitney**  
**(951) 659-2596**  
**Complete Tree Care**  
 Trimming & Removal  
 Fire Abatement  
 Brush Removal  
 Dump Truck Service & Hauling  
 Tractor Service & Grading  
 Custom Milled Wood Products  
 Firewood • Wood Chips  
 Snow Plowing  
 Lic. # 637668 • Fully insured

**Services**



**Pearson Wood Service**  
 California Contractor's  
 State Lic. 576531 • LTO# A167  
**Hazard Abatement**  
*Ask us about programs to help save on all of your abatement needs.*  
 Cell: (951) 206-9671  
**659-3676**  
 Completely Bonded & Insured  
 VISA, Discover, Novus, MasterCard, American Express

**Services**

**Spa service & new covers.**  
 Call Kent 951-659-3174.

**Psychic reading everyday.**  
 Appointment recommended.  
 Walk-ins OK. Lady of the Lake. 659-5115.

**Wood splitter rental** includes operator. Fair rates, 951-213-9035.

**For Sale**

**FIREWOOD**

**FREE DELIVERY**  
**PINE**  
**AVOCADO**  
**CITRUS**  
**EUCALYPTUS**  
**OAK**

MARIO HERRERA  
**951-927-2714**

**Espinoza Firewood**

**Orange**  
**Eucalyptus**  
**Avocado**  
**(951)**  
**487-8508**

**When you place** your classified line ad in the **Town Crier**, it also appears on our Web site at no additional charge. Call 659-2145 to get your ad in front of thousands of people! [www.towncrier.com](http://www.towncrier.com)

**FREE: Steel business desk,** 45" x 30". 951-659-3076.

**Unfinished louvre door,** 81" long x 37" wide, \$25. 951-392-7532.

**We've got more!** 400 great 8' railroad ties just arrived at Community Lumber. 659-4239.

**Fireplace** 42" wide, 10" flue, 12' high, \$300 OBO. **Glass table,** 42" wide, 66" long, 4 wicker chairs, \$300. **Louvre doors** 27-1/2" wide, 28" wide, \$20 each. 951-659-5105.

**Over 300 sq. ft.** of Armstrong Century Farm antique cashew maple 5" plank hardwood flooring. Installed it, color wrong, removed it. Paid \$5/sq. ft., sell for \$3. In Pine Cove. (714) 393-9990.

**Futon bed,** mattress: good condition, frame: fair shape, \$10. **Writing desk,** small, has short legs, \$20. Call 659-3141.

**For Sale**

**Weight set with bench,** bars, arm & leg lifts, etc. \$50. 951-659-3076.

42" wood **lathe,** \$35. **Wet saw** (MK370), \$100. **Air compressor** w/2 guns, \$150. **Maple dining room table** w/4 chairs/leaf, \$65. **Telescope,** \$25. 951-260-8996.

4 **ping pong paddles** and 1 dozen ping pong balls. \$8 for all. Call 659-0103.

**SUPER EASY & SECURE!** Place Your Town Crier Classified Ad online. Just go to [www.towncrier.com](http://www.towncrier.com) and click on Place a Classified Ad under Advertising in the menu bar. If you have any questions, please call the Town Crier at (951) 659-2145 or toll free at 1-888-535-6663. Ask for Sandy.

**FREE: Old style 5-gallon propane tank.** Can be exchanged for new ones. **Jacuzzi 100 GPM pump,** \$50. 951-659-2035.

**Clay art molds.** 5 molds for \$50. Call 951-663-9044 for more info. Ask for Ken.

**FREE CLASSIFIED**

Place a Marketplace ad for item(s) totaling \$50 or less. 5 lines, 3 consecutive weeks, private party, for sale items. One ad per household at a time. Town Crier, 659-2145.

**Antique, painted chest** of drawers, \$50. 951-659-5919.

**Lost wax casting equipment,** metal, wax & furnace. Complete package deal. 951-659-9078.

**COUNTRY WOOD STOVE**  
 T-top model, excellent. Brass legs, face and trim. Circulating fan, 13 ft. interior black pipe, roof chimney and transition box. \$700. Idyllwild. Cell: 760-310-2510.

**WANTED: OLD COINS,** SILVER Dollars, Proof Sets, Gold & Silver Coins. "COIN SHACK," 207 East Florida Ave., 951-925-5767. Next to Hungry Heart.

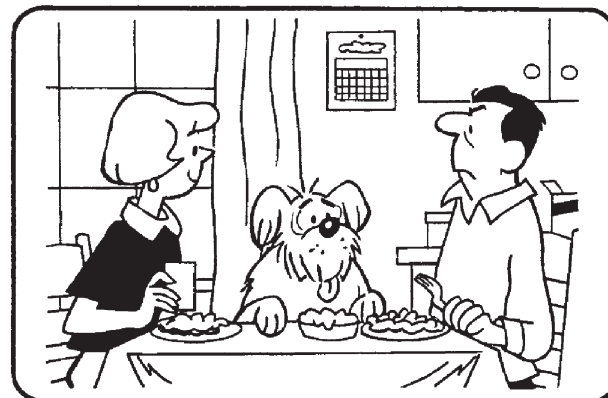
**Double recliners,** light tan/brown. Good condition. \$150 OBO. 951-392-7532.

**Wood shutters,** 63" long x 33.5" wide, brown, \$50. **Wood shutters** 59.5" long x 14" wide, white, \$50. Call 951-392-7532.

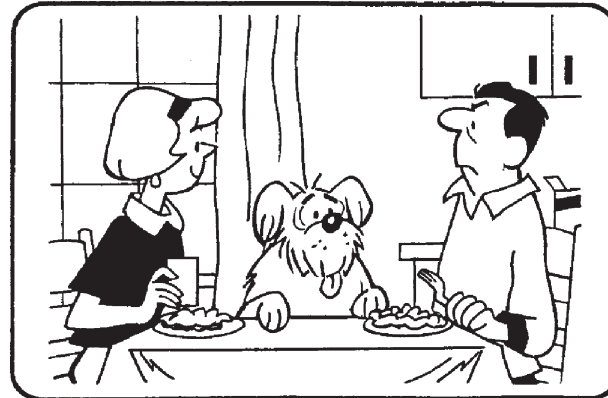
**Education**

**HIGH SCHOOL DIPLOMA!** Graduate in 4 weeks! **FREE Brochure.** Call Now! 1-866-562-3650 ext. 60 [www.SouthEasternHS.com](http://www.SouthEasternHS.com) (Cal-SCAN)

**IT'S DIFFERENT**



Find at least six differences in details between panels.



Differences: 1. Cabinet knobs are different. 2. Calendar is gone. 3. Woman has a headband. 4. Man's cuff is black. 5. Dog's food is missing. 6. Box on counter is gone.

**Equipment**

**NEW Norwood SAWMILLS-** LumberMate-Pro handles logs 34" diameter, mills boards 28" wide. Automated quick-cycle-sawing increases efficiency up to 40%! [www.NorwoodSawmills.com/300N](http://www.NorwoodSawmills.com/300N) 1-800-661-7746 ext. 300N. (Cal-SCAN)

**Health**

**IF YOU USED TYPE 2 DIABETES DRUG AVANDIA** between 1999- present and suffered a stroke, heart attack or congestive heart failure you may be entitled to compensation. Attorney Charles Johnson 1-800-535-5727. (Cal-SCAN)

**Schools**

**ATTEND COLLEGE ONLINE** from Home. \*Medical, \*Business, \*Paralegal, \*Criminal Justice. Job placement assistance. Computer available. Financial Aid if qualified. SCHEV certified. Call 888-210-5162 [www.Centura.us.com](http://www.Centura.us.com) (Cal-SCAN)

**Autos Wanted**

**DONATE YOUR CAR:** Children's Cancer Fund! Help Save A Child's Life Through Research & Support! Free Vacation Package. Fast, Easy & Tax Deductible. Call 1-800-252-0615. (Cal-SCAN)

**DONATE YOUR VEHICLE!** Receive Free Vacation Voucher. United Breast Cancer Foundation. Free Mammograms, Breast Cancer Info [www.ubcf.info](http://www.ubcf.info) Free Towing, Tax Deductible, Non-Runners Accepted, 1-888-468-5964. (Cal-SCAN)

**Yard Sales**

**Garner Valley HUGE moving sale,** Oct. 9 & 10. 35700 Penrod Canyon Road. Lawn & garden equip., furn. & kitchen items, Kubota tractor, lawn tractor, round pen, newer spreader, 1968 GMC flatbed pickup truck. 951-659-5278.

Continued →

**Idyllwild Landscape Company**  
*For all your landscaping needs.*  
**951-961-4428**

**Your Computer Helper** for PC/Windows, tutoring, upgrade, troubleshooting, virus removal, data recovery. **Francoise Frigola.** Over 40 yrs. exp. **659-4146.** [yourcomputerhelperonthehill.com](http://yourcomputerhelperonthehill.com)

**LOVING HEART SENIOR CARE.** In-home personal care, meds., shopping, meals, housecleaning. CPR certified. Alzheimer exp. Robyn 951-537-0508.

**Petsitting, visits** to your home. Walk your dogs, cuddle your cats. Exp. giving meds, also exp. caring for livestock. Local refs. Barb, (951) 663-2480.

**Gary Drywall. Tape,** texture and repair. Don Gary, 30 years' experience. (951) 659-2536.

Local gal looking to "Lighten Your Load." Yard/house work, run errands, chauffeur, light cooking, walk & feed pets, stack/haul firewood & shovel snow! I also organize/declutter, help set-up for parties/holidays and wash/wax/detail your car. M-Th., 8-5 p.m. 951-216-5866.

**JT's Property Maintenance,** home repair & caretaking. Abatement upkeep, hauling. Wood cutting & splitting. 37 years on the Hill. Call Jim 951-659-3400 or 951-316-2500 (c).

**Yardbirds are back!** Rake, haul, we do it all. Just give us a call. 951-867-2938.

**BEAUTIFUL**

**Shop the Town Crier Store!**  
 Come in or shop online at [www.towncrier.com](http://www.towncrier.com).

- Idyllwild Calendars
- Idyllwild License Plate Frames
- Topo & Relief Maps
- Yard Sale Kits
- Subscriptions

**And more!**

**IDYLLWILD CA**

9	8	4	6	3	5	7	2	1
1	3	7	8	9	2	6	5	4
5	6	2	4	7	1	9	3	8
6	5	3	7	4	9	8	1	2
2	4	9	5	1	8	3	7	6
7	1	8	2	6	3	5	4	9
3	9	5	1	2	6	4	8	7
8	7	1	9	5	4	2	6	3
4	2	6	3	8	7	1	9	5

**Answers to Sudoku**  
 (Puzzle on next page)

I	D	S		P	R	O	W		B	A	S	H	
T	O	Y		E	I	R	E		O	G	E	E	
O	H	M	Y	W	O	R	D		L	O	R	E	
				P	O	E	T		L	E	G	A	L
S	P	O	K	E		G	R	A	Y				
M	U	S	E		G	O	O	D	N	E	S		
U	R	I		B	L	O	W	S		N	E	E	
G	R	A	C	I	O	U	S		S	T	A	G	
				D	E	B	T		C	A	I	R	O
S	H	I	R	R		B	U	R	R				
T	A	C	O		D	E	A	R	I	E	M	E	
I	T	E	M		O	A	K	S		L	O	L	
R	E	D	S		T	R	E	E		Y	A	M	

**Answers to Crossword**  
 (Puzzle on next page)



# Classifieds

Continued from previous page

## Yard Sales

**Estate Sale: 25078** Franklin (end of Franklin, cul-de-sac) Sat. & Sun., 10 a.m.-6 p.m. Everything must go! Antiques, tables, new kitchen gadgets, art & lots of misc.

## Rentals Wanted

**Couple needs home** by Oct. 17. \$850, if includes some furniture and/or utilities. Good references. Call (630) 632-2732 or (951) 659-3093.

## For Rent or Lease

**2BR, 2BA+ office.** UPGRADED HOME IN SECLUDED SETTING. Complete remodel in 2007 w/ new paint, flooring, counters, bathrooms, blinds and decks. W/D, gas heat, inset FP, DW, fridge, NS, pet w/ approval. \$900/mo. + utilities. 602-441-4162.

**When you place** your classified line ad in the **Town Crier**, it also appears on our Web site at no additional charge. Call 951-659-2145 to get your ad in front of thousands of people! [www.towncrier.com](http://www.towncrier.com)

**3 BR, 1.75 BA** in Pine Cove. Call 951-544-3815 or 951-926-9515 for details, leave msg. w/ name and phone #.

**2 great options:** 2 BR, 1 BA mobile, all ages, new paint, FP, pool, great loc. near Idy Arts, \$750/mo. or cozy cabin, furn. on Scenic, \$650/mo. Pet OK. 951-659-5795.

## For Rent or Lease

**\$750/mo., 1 BR, 1 BA.** Large enclosed yard, walk to town, plowed road, nice setting. No smoking. Will consider pets. Call 310-663-1905.

**Studio cabin w/covered** front entrance and private rear deck, quiet 2 acres, easy access/parking, new appliances, full bath, no smoking. 1 yr. lease w/good refs. \$650/mo. utilities included, \$650 sec. 951-966-1094, 966-4618 or 659-8710.

**Gorgeous Fern Valley 3** BR, 3 BA. Private, quiet double lot, huge deck w/view, den w/FP, large kitchen w/ appliances, breakfast bar, formal dining room, office, mudroom & laundry w/washer & dryer. No smoking/pets. 24735 Forest Dr. \$1,099/mo. Call 818-416-1514.

**Creekside Fern Valley, 2 BR,** 1 BA, secluded, screened porch, spa, F/A, FP, W/D, furn. or unfurn. \$1000/mo. + dep. 951-313-1813.

**Attractive Fern Valley 2** BR, 1 BA home. Remodeled & furnished, deck, large FP, F/A heat, W/D, \$800/mo. + sec. dep. No smoking. (602) 441-4162.

**\$975/mo., 3 BR, 1 BA.** Huge rock FP w/insert, large deck. 53280 Meadow Dr. Owner/agent 760-414-1441.

**3 BR, 1-1/2 BA,** 54395 Mari-on View, \$1350/mo. 951-314-0984.

## For Rent or Lease

**2 BR, 1 BA,** Idyllwild/Pine Cove house, 1200 sq. ft., built in 2004, Jacuzzi tub, airtight stone FP, deck, \$975/mo., pet upon approval. Call (951) 751-1901 or (951) 699-5837.

**2 BR, 1.5 BA** house with office, laundry, fireplace, furnace, beautiful views, quiet, comfortable, roomy. Outdoor dining patio with fireplace, large deck on West Ridge Rd. \$950/mo. Erica 562-686-5897 or [ericagc@charter.net](mailto:ericagc@charter.net)

**Private, quiet & secluded,** unique 2 BR home w/view near Idy Arts. Large FP w/ wood inc., 2nd floor MBR w/deck, view deck off kitchen. 1st and last mo. rent. \$1100/mo. + 1 yr. lease. 760-580-2619.

**Very nice, 2 BR,** 1-3/4 BA, rock FP, gas heat, DW, dryer, washer hookup, new floors & windows, lovely setting, large enclosed yard. Plowed road. Walk to town. \$935/mo. + utilities. NS. Pet w/approval. 310-663-1905.

## For Rent or Lease

**BEAUTIFUL 3 BR, 2 BA** FAMILY HOME close to town and easy walk to Arts Academy. Near Strawberry Creek, backs up to forest. Can sleep 8. Two relaxing decks. Quiet, serene. Year lease negotiable. Nicely furnished \$1225/mo. Call now 562-972-6000.

**PINE COVE HOUSE** for lease, 2 BR, 1 BA, \$800/mo. Cute, comfy, good neighbors. Call for details. 619-889-8166.

**No Screening Fee**  
1 RV space \$420/mo.  
2 / 1 mobile home,  
\$540/mo.  
Rent to own.  
Serial # S1915  
Dealer # DL115294  
Details: Rent.FocusMan.Biz  
or (951) 487-1966

**1 BR cabin,** fully furnished, full kitchen, W/D, satellite TV, Internet, gated. Magnificent view w/outside Jacuzzi tub. Pet friendly. Vac. rental. Call 310-722-6464.

**1 unit avail.** Oct. 1 or sooner. Studio cabin, \$485/mo + dep. Call 760-469-5905.

## For Rent or Lease

**Idyllwild Property Management**  
**Long Term Leases**  
Pick up a flyer at our office or check out our Web site for up-to-date listings 54710 N. Circle Dr. #4 P.O. Box 3411 Idyllwild, CA 92549  
Office: 951-659-4200  
Fax: 951-659-4206  
Toll free: 866-669-4200  
[www.myipmoffice.com](http://www.myipmoffice.com)

**Bright & cheery,** 1 BR + loft apt., 1-1/2 BA, skylights, cathedral ceiling, 2 covered decks, 1/2 garage for storage, W/D. No smoking/pets. \$795/mo. Pete at 951-659-2320 or 951-452-5552.

**Desperate for a rental?**  
Place your classified ad in the best read "bulletin board" in town  
The Town Crier.  
Call Sandy 659-2145.

## For Rent or Lease

**Private, 2 BR, 1 BA,** 1100 sq. ft., fully furn., FP, util. & dish TV incl. \$795/mo. No smoking. 951-659-5919 or email [angeofmk@gmail.com](mailto:angeofmk@gmail.com).

**Large 5th wheel,** 1 BR queen. Space 43. \$600/mo. plus utilities. Please call manager, Mary 951-659-2691.

## Commercial Rentals

**Strawberry Creek Square** space for rent. Lower level, 1148 square ft. Available immediately. Call 951-306-2120.

**FOR LEASE**  
**RETAIL/GALLERY**  
**PLUS LIVING SPACE**  
With 1 bedroom, full bath, full kitchen.  
**NEXT TO CAFE AROMA**  
54790 N. Circle Drive  
Approx. 1200 sq. ft.  
\$1,200/mo.  
Call 310-390-9451

Continued →

# HOROSCOPE

**ARIES** (March 21 to April 19) Some flashes of Aries ire might erupt as you confront an unusually bewildering situation. But you should be able to keep your temper under control as you work through it.

**TAURUS** (April 20 to May 20) That marriage 'twixt the arts and practicality at which Taureans excel once again highlights your enjoyment of much of the week. However, you need to watch any sudden urge to splurge.

**GEMINI** (May 21 to June 20) Even with all the plusses apparently outweighing the minuses, you still might want to defer an important decision to make sure you have all the facts you need.

**CANCER** (June 21 to July 22) One or two problems might threaten to derail otherwise smoothly running situations at work or at home. But a few well-placed words should help get things back on track quickly.

**LEO** (July 23 to August 22) This could be a good time for all you Leos and Leonas in the spotlight to open your generous lions' hearts and share the glory with those who helped you accomplish so much along the way.

**VIRGO** (August 23 to September 22) You might want to get advice from someone who's been there and knows these situations better than you do, before investing time or money (or both) in a questionable matter.

**LIBRA** (September 23 to October 22) Be careful how you

handle a workplace matter that seems out of place in the schedule you've prepared. Before you act, one way or another, find out who set it up and why.

**SCORPIO** (October 23 to November 21) Your entertainment aspect is strong this week. Besides providing a wonderful break from everyday obligations, sharing fun times brings you closer to those you care for.

**SAGITTARIUS** (November 22 to December 21) Having a weekend fun fest? Your friend or relative who's down in the emotional dumps could perk up if you find a way to include him or her in your plans.

**CAPRICORN** (December 22 to January 19) If you're in one of those "the Goat knows best" periods, you might want to ease up and try listening to what others have to say. You could learn something.

**AQUARIUS** (January 20 to February 18) That new challenge is getting closer, and you should be out there showing facts and figures to potential allies to help persuade them to rally to your support. Good luck.

**PISCES** (February 19 to March 20) Getting a head start on holiday plans could help free up some time later to spend on other projects. Meanwhile, a colleague has some ideas that you might find worth discussing.

**BORN THIS WEEK:** You are always there for others, and sometimes you need to be reminded that you need to be there for yourself as well.

# CROSSWORD

(Answers on previous page)

1	2	3	4	5	6	7	8	9	10	11
12			13					14		
15			16					17		
		18					19			
20	21				22	23				
24				25				26	27	28
29			30					31		
32			33					34		
			35				36			
37	38	39				40				
41					42	43			44	45
46					47				48	
49					50				51	

## ACROSS

- 1 Picks out of a lineup
- 4 Ship's front
- 8 Wild party
- 12 Plaything
- 13 Green land
- 14 Curved molding
- 15 "Wow!"
- 17 Traditional tales
- 18 Versifier
- 19 Constitutional
- 20 Orated
- 22 Overcast
- 24 Ponder
- 25 "Wow!"
- 29 Swiss canton
- 30 Huffs and puffs
- 31 Born
- 32 "Wow!"
- 34 Unescorted
- 35 Unpaid bill
- 36 Illinois city
- 40 Perry Mason portrayer
- 41 Mexican entree
- 42 "Wow!"
- 46 Detail
- 47 Squirrels' hangouts
- 48 "That's funny!"
- to a texter
- 49 Cincinnati team
- 50 Genealogy chart
- 51 Sweet potato

## DOWN

- 1 Judge Lance
- 2 Homer's interjection
- 3 Formal discussions
- 4 Small flycatcher
- 5 Laugh-a-minute
- 6 Bobby of hockey
- 7 Become one
- 8 Anne who married Henry VIII
- 9 More than enthusiastic
- 10 Antitoxins
- 11 Command to Fido
- 16 Oxen's binder
- 19 Young blokes
- 20 Too confident
- 21 Engine noise
- 22 Leave
- 23 Tiers
- 25 Amorphous mass
- 26 In toto
- 27 Burn somewhat
- 28 Lily variety
- 30 Coffin support
- 33 File holders
- 34 Ganges wrap
- 36 Talk a blue streak?
- 37 Use a teaspoon
- 38 Loathe
- 39 On the rocks
- 40 Prepare a casserole
- 42 Braille component
- 43 Anvil's site
- 44 Extinct New Zealander
- 45 Shade provider

# SUDOKU

(Answers on previous page)

		4			5			1
1			8			6		
	6			7				3
6					9			1
	4		5			3		
7		8		6				9
3				2				8
	7				4	2		
		6	3					5

Place a number in the empty boxes in such a way that each row across, each column down and each small 9-box square contains all of the numbers from one to nine.







## Letters

*Continued from page 6*

### Vote No on Proposition 22

EDITOR:

The following is in response to Marshall Smith's article on Proposition 22.

According to the state's nonpartisan Legislative Analyst's Office, Proposition 22 is a constitutional amendment that allocates \$1 billion more for transportation projects from the general fund and locks in funding for redevelopment agencies.

Proposition 22 does not protect local funding. It protects redevelopment agen-

cies that are, in fact, state agencies.

As the L.A. Times describes, Proposition 22 is a bait and switch. It focuses on transportation, but its real purpose is to preserve redevelopment agencies' ability to capture property taxes from the counties throughout California, in order to subsidize real estate development and reduce the revenue available for funding such things as police and fire departments and water districts.

As stated in a L.A. Times editorial, "It's hard to see why redevelopment agencies' ever-growing share of local property taxes — 12 percent statewide by one estimate — is more worthy

of protection than school budgets, worker training programs or any of the other public services coming under the knife."

In terms of transportation, it makes no sense to force the Legislature to use the general fund instead of fuel tax revenue to pay off existing transportation bonds, as Proposition 22 would do.

Diverting the money out of the general fund cuts the guaranteed funding for schools by an estimated \$400 million a year. It also creates a \$1 billion loss in revenue each year, and perhaps up to a several billion dollar loss, that would've gone to health, welfare, the environment, schools, universities and other crucial programs.

BOB FERGUSON  
IDYLLWILD  
AND CLAREMONT

### Let's get some discussion on the BID

EDITOR:

One of the reasons I joined in signing a Letter to the Editor ("Consider the BID," Sept. 30, 2010) was the thought that doing so might prompt a dialogue between full-time residents and vacation homeowners. [I hoped this exchange would] result in a better understanding of the proposed Idyllwild Business Improvement District (IBID).

Corresponding might also correct an impression that vacation homeowners are not all that interested in a strong Idyllwild business community or are insensitive to "supporting the local economy."

Some of the rhetorical questions raised in the letter were:

- Are there flaws in the IBID proposal?

- How will a "tax" affect everyone (business owners — large and small — and private homeowners)?

- Could our sense of "peace" be affected?

- Are only licensed businesses going to have a vote?

- Does the community as a whole have similar questions?

Perhaps some additional "what if" topics should be explored.

- Could everyone who might benefit from this increase in business and tourism be brought on board?

- Should "peace" be sacrificed? Or could increased tourism fit within, or even be centered on, our historical natural beauty?

- What about the votes of "non-business" property owners (whose county taxes or fees might also increase) on the IBID proposal?

- Could a local fund be created and, with adequate publicity (by the Chamber of Commerce), be administered and grown within the confines — and under the control — of the Idyllwild

community?

- If everyone were participating, might not most of us support a grassroots "plan," either by paying increased prices or even weathering an "assessment" paid into a local fund (much like the Community Chest of old)?

But let's get some discussion going. This could include on-the-ground meetings as well as some additional in-depth coverage in the Town Crier! (We cannot all be here in Idyllwild 24/7 — as much as we would like to!)

DONALD GIGER  
OMAHA/IDYLLWILD

### Consider the BID

EDITOR:

I am writing to express my gratitude to the authors of the letter entitled "Consider the BID" which appeared in the Sept. 30 edition of the Town Crier. This letter was a gem and I agree with it wholeheartedly.

Thank you, dear writers, for pointing out that the business district is not the only group that has an interest in our "bit of paradise." If you have not read it, I encourage everyone with an interest in our community to go back and read it.

Business Improvement District? The name clearly indicates the group's main objective is to improve business.

[Assuming] that is the

main focus, maybe it should be called "Business/Money maker Improvement District," or something.

Anyway, how about some balance here? A little opposition to keep the BID in check because I don't think the residents of Idyllwild are being represented.

In fact, the final paragraph of this letter offers a most ingenious solution. I'm surprised the BID didn't come up with this idea themselves. "If they need to charge more to stay profitable, let them simply do that and then the customers will decide whether or not the new price is still fair and competitive." That sounds fair to me. Increased tourism? More people, more trash, more noise.

Really. And, the whole tax thing just doesn't sit well with a lot of residents. So, the businesses will decide if all of us should be taxed? Sounds very one-sided to me.

By whose authority is the BID allowed to go about changing the face of Idyllwild?

The mountain is a gift of peace, nature and beauty. Idyllwild doesn't need improving. More isn't always better, especially when what we stand to lose is great. We don't want to wait "until the town of Idyllwild has no charm or natural resources" to act; it needs preservation and our protection, now.

KARIN SINCLAIR  
PINE COVE

## Public Notices

*Continued from previous page*

Shank Lane, Anza, California 92539.

This business is conducted by a general partnership.

Registrant has not yet begun to transact business under the fictitious name listed above.

Signed:

LISA JUNE DAILEY

Statement filed with the County Clerk of Riverside County on Sept. 23, 2010.

FILE NO.:

R-2010-10336

NOTICE — THIS FICTITIOUS NAME STATEMENT EXPIRES ON SEPT. 23, 2015. A NEW FICTITIOUS BUSINESS NAME STATEMENT MUST BE FILED PRIOR TO SEPT. 23, 2015. THE FILING OF THIS STATEMENT DOES NOT ITSELF AUTHORIZE THE USE IN THIS STATE OF A FICTITIOUS BUSINESS NAME IN VIOLATION OF THE RIGHTS OF ANOTHER UNDER FEDERAL, STATE, OR COMMON LAW (SEE SECTION 14411 ET SEQ., BUSINESS AND PROFESSIONS CODE).

CERTIFICATION

I hereby certify that this copy is a correct copy of the original statement on file in my office.

LARRY W. WARD,

County Clerk

By: M. Llaneras, Deputy

Pub. TC: Oct. 7, 14, 21, 28, 2010.

Acorn Lane, Idyllwild, CA 92549.

This business is conducted by an individual.

Registrant has not yet begun to transact business under the fictitious name listed above.

Signed:

MARTHA ALICIA SANCHEZ

Statement filed with the County Clerk of Riverside County on Sept. 30, 2010.

FILE NO.:

R-2010-10550

NOTICE — THIS FICTITIOUS NAME STATEMENT EXPIRES ON SEPT. 30, 2015. A NEW FICTITIOUS BUSINESS NAME STATEMENT MUST BE FILED PRIOR TO SEPT. 30, 2015. THE FILING OF THIS STATEMENT DOES NOT ITSELF AUTHORIZE THE USE IN THIS STATE OF A FICTITIOUS BUSINESS NAME IN VIOLATION OF THE RIGHTS OF ANOTHER UNDER FEDERAL, STATE, OR COMMON LAW (SEE SECTION 14411 ET SEQ., BUSINESS AND PROFESSIONS CODE).

CERTIFICATION

I hereby certify that this copy is a correct copy of the original statement on file in my office.

LARRY W. WARD,

County Clerk

By: L. Sibley, Deputy

Pub. TC: Oct. 7, 14, 21, 28, 2010.

#### FICTITIOUS BUSINESS NAME STATEMENT

The following person is doing business as PIETRA STONE DESIGN, 46645 Washington Street, La Quinta, CA 92253, Riverside County. Impacto Internacional, Inc., 69533 Encanto Court, Rancho Mirage, CA 92270, a California corporation.

This business is conducted by a corporation.

Registrant has not yet begun to transact business under the fictitious name listed above.

Signed:

ADOLFO NORIEGA

President

Statement filed with the County Clerk of Riverside County on Sept. 27, 2010.

FILE NO.:

I-2010-02581

NOTICE — THIS FICTITIOUS NAME STATEMENT EXPIRES ON SEPT. 27, 2015. A NEW FICTITIOUS BUSINESS NAME STATEMENT MUST BE FILED PRIOR TO SEPT. 27, 2015. THE FILING OF THIS STATEMENT DOES NOT ITSELF AUTHORIZE THE USE IN THIS STATE OF A FICTITIOUS BUSINESS NAME IN VIOLATION OF THE RIGHTS OF ANOTHER UNDER FEDERAL, STATE, OR COMMON LAW (SEE SECTION 14411 ET SEQ., BUSINESS AND PROFESSIONS CODE).

CERTIFICATION

I hereby certify that this copy is a correct copy of the original statement on file in my office.

LARRY W. WARD,

County Clerk

By: R. Cardenas, Deputy

Pub. TC: Oct. 7, 14, 21, 28, 2010.

#### FICTITIOUS BUSINESS NAME STATEMENT

The following person is doing business as FERN VALLEY VACATION CABINS, 25240 Fern Valley Road, Idyllwild, CA 92549, Riverside County. Mailing address: P.O. Box 415, Idyllwild, CA 92549. MARTHA ALICIA SANCHEZ, 52220

#### FICTITIOUS BUSINESS NAME STATEMENT

The following person is doing business as PALM DESERT GLASS, 73760 Spyder Cir., Palm Desert, CA 92211, Riverside County. LJR VENTURES, INC., 37785 Hollister Dr., Palm Desert, CA 92211, a Wyoming/California corporation.

This business is conducted by a corporation.

Registrant has not yet begun to transact business under the fictitious name listed above.

Signed:

LISA J. BERKELEY

President

Statement filed with the County Clerk of Riverside County on Sept. 29, 2010.

FILE NO.:

I-2010-02603

NOTICE — THIS FICTITIOUS NAME STATEMENT EXPIRES ON SEPT. 29, 2015. A NEW FICTITIOUS BUSINESS NAME STATEMENT MUST BE FILED PRIOR TO SEPT. 29, 2015. THE FILING OF THIS STATEMENT DOES NOT ITSELF AUTHORIZE THE USE IN THIS STATE OF A FICTITIOUS BUSINESS NAME IN VIOLATION OF THE RIGHTS OF ANOTHER UNDER FEDERAL, STATE, OR COMMON LAW (SEE SECTION 14411 ET SEQ., BUSINESS AND PROFESSIONS CODE).

CERTIFICATION

I hereby certify that this copy is a correct copy of the original statement on file in my office.

LARRY W. WARD,

County Clerk

By: S. Perez, Deputy

Pub. TC: Oct. 7, 14, 21, 28, 2010.

#### LIEN SALE

CIVIL CODE 3071 & 3072

On 10-19-10 at 2429 S. San Jacinto Ave., San Jacinto, CA 92583 a Lien Sale will be held on a INFI vehicle, VIN: JNKCA21A1WT632878, CA Lic.: 6JLA441 at 10:00 a.m.

Pub. TC: Oct. 7, 2010.

## Our time

*Continued from page 7*

in 1980, became Camp Ronald McDonald.

Not all camps had to be built from scratch. Until its closure in 1990, the Desert Sun School (a.k.a. Elliot-Pope School) operated summers on its Saunders Meadow campus. Now occupied by Astrocamp, the property was originally the Mount San Jacinto Golf Club, Strong and Dickinson's short-lived attempt to compete with Emerson's golf course on Tollgate Road.

An elaborate retreat near the county park called "4 Chimneys," built by Hollywood film director Al Santell in the 1930s, housed

Ann Lay's leadership camp for Junior ROTC girls — "Idyllwild Institute-Fiesta" — from 1965 to the 1990s.

The fire-ravaged remains of Tahquitz Lodge resort was reborn as Tahquitz Meadows, a YWCA camp lasting from 1944 to 1980. (Living Free now occupies the site near Mountain Center.)

All told, there have been at least 23 camps in our mountain area, a dozen of which persist today, still predominantly supporting scouting and religious groups. With such a wealth of opportunity, it's not surprising that a remarkable proportion of our residents and visitors first came here as children, accumulating memories that would inevitably draw them back years later.

## Propane

*Continued from page 9*

If available through Hill propane companies, there are three ways to negotiate propane prices: by locking in a price an estimated amount of gas for the entire year, usually in late spring or early summer; by participating in a group or association buy; or by buying a bulk amount of gas at one time.

Regardless of these references and guidelines, Hill propane companies have historically charged what they could, as recounted in stories by those in attendance at Nestand's meeting.

Recently, the attorney general of Minnesota sued Ferrellgas over pricing structures and failure to disclose they were not completely filling tanks even

though they were charging for filled tanks. One consumer in Minnesota was being billed \$5.27 per gallon for one delivery when the state listed the market price at \$1.77 per gallon. Some 20-gallon tanks were being filled at 15 to 18 gallons and charged as 20.

Attorney General Lori Swanson also noted that customers were being surprised with additional fees when they cut back on propane use or tried to get their tanks removed.

The easiest way to check spot pricing is to call St. George Spirit in Hemet and see what their propane price per gallon is and compare that to what Hill companies are charging.

St. George Spirit's number is (951) 929-7000.

*Marshall Smith can be reached at marshall@towncrier.com.*



# Idyllwild Service Directory

- New ads placed at beginning of month only
- Deadline for new ads: 5 p.m. last Thursday of month
- Unless the heading is currently running, your ad must be 2 col. x 2" or larger.
- Minimum insertion: 1 month
- One copy change permitted monthly
- Deadline for copy change: noon Friday

- 1 COL. x 2" = \$13.40 PER WEEK
- 1 COL. x 2-1/2" = \$16.75 PER WEEK
- 2 COL. x 2" = \$26.80 PER WEEK
- 2 COL. x 2-1/2" = \$33.50 PER WEEK
- 2 COL. x 3" = \$40.20 PER WEEK
- 2 COL. x 3-1/2" = \$46.90 PER WEEK

Questions? Call Sandy at (951) 659-2145 or E-mail: [sandy@towncrier.com](mailto:sandy@towncrier.com)

## Abatement

**IDYLLWILD YARD SERVICE**  
Abatement, Property Maintenance, Raking, Light Hauling  
951-659-9748  
Cell: 951-326-5796

SUBSCRIBE TODAY!  
659-2145

## Harding Construction

NEW & REMODEL

SNOWPLOWING

BACKHOE TRACTOR WORK

FIREWOOD

CHIMNEY SWEEPING

ABATEMENT

951-303-7887

## Chimney Sweep

### Top Hat Chimney Sweeping

Serving Idyllwild and surrounding areas

GUARANTEED NO MESS!

An Idyllwild Tradition

Call Today to Beat the Winter Rush

Evening/Weekend Appts.

Free inspections

951-659-4800



## Cleaning Services



### Forest Cleaning & Maintenance Service

Residential • Vacation Homes • Commercial

Residential Cleaning Service • Carpet & Upholstery  
Window Cleaning • Floor Care • Wood Floor Refinishing  
Power Washing • Deck Staining • Vacation Rentals

IDYLLWILD'S LOCAL CLEANING & MAINTENANCE SPECIALISTS

FULLY INSURED & BONDED FERNANDO ALVAREZ

659-1012 www.idyllwildcleaning.com

## Appliances

### IDYLLWILD APPLIANCE & Repair Co.

- Sales on new & used appliances
- Quality service on appliances & heating systems

Chris & June Rockwell  
659-9845  
[idyllwild.appliances@verizon.net](mailto:idyllwild.appliances@verizon.net)  
Lic#A42153

## Auto Repair

### Idyllwild Garage

AUTO REPAIR

25015 HWY. 243 • ARB # AB 130423

• ROAD SERVICE •

Day or Nite/Call Us!

Days ~ 659-2613

Eves ~ 659-2748

✓ Smog Check CLOSED SUNDAYS

Auto Care Center  
We Install Quality NAPA Parts

## Carpet & Upholstery Cleaning

### ServiceMaster Professionals

(951) 659-2986

- Carpet Cleaning
- Tile & Grout Cleaning/Sealing
- Upholstery & Drapery Cleaning
- Oriental Rug Cleaning
- Pet Spot/Odor Treatment
- Mold Abatement
- Total Home Cleaning
- Fire, Smoke, & Water Damage Restoration
- Contractor's Lic# 721285
- Bonded & Insured

ServiceMASTER Clean

### Flooring & Furniture Cleaning Specialists

CALL FOR A FREE ESTIMATE



www.theyellowvan.com

To find out if a contractor's license is valid and current, call the California Contractors State License Board at 1-800-321-2752 or visit the Web site at [www.cslb.ca.gov](http://www.cslb.ca.gov)

## Cleaning Services



### Cottage Caretakers

Cleaning & Handyman Service

#### House Cleaning

Window Washing  
Carpet Cleaning  
Chimney Sweeping  
Home Repairs

"FALL PACKAGE"  
Rain Gutter, Roof & Chimney Sweep

Jim Brannan • Since 1985

Idyllwild (951) 659-2688

[cottage.caretakers@yahoo.com](mailto:cottage.caretakers@yahoo.com)

You can get full-color 4x6, 5x7, or 8x10 glossy prints of almost any photo that appears in the Town Crier.  
Call 659-2145

## Four Seasons Cleaning & Janitorial Service

Commercial  
Residential  
Vacation Homes  
Homes for Sale



Windows  
Hauling  
General Clean Up  
Snow Plowing  
Free Estimates

Martha Lopez, Owner  
Since 1997

P.O. Box 1259  
Idyllwild, CA 92549

(951) 313-1929  
Riv. Lic. 026215

## Computers

### Omni Web

- Website Design, Hosting, Marketing and Analytics
- Computer Repairs
- Computer Support for Hardware, Software, Malicious Software
- Networking



Don Raridon, BSc CS  
[support@idyllwildcomputers.com](mailto:support@idyllwildcomputers.com)  
951-514-7545

## IDYLLWILD PROFESSIONAL CLEANING SERVICE

### Patty & Aurelio Perez



General Cleaning  
Commercial, Residential, Vacation Home  
Window Cleaning, Carpet & Upholstery  
Fully Insured/Bonded

FREE ESTIMATES • Serving Idyllwild Since 1995  
P.O. Box 110, Idyllwild, CA 92549 • (951) 659-6451



## Pérez Cleaning Services

Professional Window Cleaning

Residential & Commercial Cleaning,  
Vacation Home Maintenance Service Plus:

#### Handyman Service:

Painting, Carpet, Upholstery,  
Floor Care, Wood Floor Refinishing,  
Deck Staining, Yard Cleaning.  
Serving Idyllwild Since 2000



Gloria Pérez  
Lupe Chavez  
951-659-2633

Free Estimates  
Fully Insured, Bonded  
Riverside Lic.#: 021728

The Town Crier offers a wide variety of

## Business Cards!

From basic black-and-white to full-color cards on special paper. Wide variety of samples to choose from. 659-2145

## Town Crier Contacts

(951) 659-2145

Publisher  
Grace Reed  
[grace@towncrier.com](mailto:grace@towncrier.com)

Editor  
J.P. Crumrine  
[jp@towncrier.com](mailto:jp@towncrier.com)

Advertising Sales  
Shane Fender  
[shane@towncrier.com](mailto:shane@towncrier.com)

Classifieds,  
Service Directory,  
Public Notices  
Sandy Burns  
[sandy@towncrier.com](mailto:sandy@towncrier.com)

Subscriptions,  
Newsstands  
James Larkin  
[james@towncrier.com](mailto:james@towncrier.com)



**Construction**

**eric townsend construction co.**

**659-5152**

- REMODELS
- ADDITIONS
- DECKS
- CARPORTS
- GARAGES
- KITCHENS
- BATHS



state license # 361734

[www.erictownsendconstruction.com](http://www.erictownsendconstruction.com)

**PADGETT DESIGN & CONSTRUCTION**



*Engaging Designs For Every Budget  
Additions, Remodels & Decks*

**35 Years in Idyllwild • (951) 659-4278**

[www.padgettdesign.com](http://www.padgettdesign.com) • St. Lic. # 369591

**Johnny's Handyman Services**

Riv. Co. Lic. #: 026747

- Plumbing
- Roofing
- Decks
- Yardwork
- Demolition
- Painting
- Fences
- Sprinklers
- Flooring
- Drywall
- Masonry
- Concrete

Cell: (951) 334-6215

**CBC CONTRACTORS**

New Homes  
Decks • Garages  
Additions

*"Big Or Small,  
We Do It All!"*

Chris Beagle  
951.659.6170

Lic.# 882412

**FRIEMOTH CONSTRUCTION**

OVER 25 YRS.  
EXPERIENCE



HOME IMPROVEMENT  
CONTRACTOR

Jeff Friemoth  
Cell: 951-961-1662  
Office: 951-659-3624  
Fax: 951-927-6168  
[friemothconstruction@yahoo.com](mailto:friemothconstruction@yahoo.com)

GENERAL BUILDING  
CONTRACTOR

Lic. # 537816  
P.O. Box 384  
Idyllwild, CA 92549

**Design and Decorating**

*Artscaping*  
Art for interior and exterior landscapes  
Floor to ceiling design services  
by Chris Maxson

artscaping@msn.com  
www.artscaping.biz  
951 526 4025  
PO Box 3432  
Idyllwild, CA 92549

an affiliate of  
**IDYLLWILD GALLERY OF FINE ART**  
[www.idyllwildgallery.com](http://www.idyllwildgallery.com)

**Electrical Contractors**

**CALL BOB**

35 yrs. exp.  
for quick, reliable solutions to  
all your electrical problems.

**Haviland Electric**

Ca. Lic. #628824

**659-5732**

**JOB Electric of Idyllwild**

Lic. #: 931474  
Jevon O. Browning  
**(951) 492-8798**

**Equipment Rental**

**SANDLIN & SON RENTS**

25600 FERN VALLEY ROAD

Please call to check availability of equipment.



**659-3528**

- Air Compressors
- Small Tools
- Ladders
- Sand Blasters
- Paint Sprayers
- Trenchers • Tillers
- Electric Jack Hammers
- Mini Excavator
- Pressure Washers
- Carpet Cleaners

**Glass**

**IDYLLWILD GLASS CO.**

est. 1976



Specializing in Energy Saving Dual-Glazed Windows  
Sales & Installations  
Replacement Glass ♦ Mirrors  
Skylights ♦ Shower Enclosures  
Wardrobe Mirror Doors  
Screens ♦ Sliding Patio Doors  
Windows  
Unlicensed

♦ 54821 N. Circle Dr. ♦  
659-5132 / 659-3741

**Mayers Glass Corp.**

Serving Idy. Since 1958

~ CUSTOM WORK ~

Rescreening • New Screens  
Screen Doors  
Repair Windows  
Custom Shower Doors  
Mirrors • Parts

Replacement Windows

125 N. Yale St., Hemet  
M-F, 8-5 • Sat., 8-Noon  
**(951) 658-7144**  
Lic. 800995

**Insurance**

**LIKE A GOOD NEIGHBOR,  
STATE FARM IS THERE.®**

**Valerie Tichy-Drummer, Agent**

Insurance Lic. #: 0697117

951-658-2288 or 1-800-966-2288  
valerie@valerietichy.com

LIKE A GOOD NEIGHBOR STATE FARM IS THERE.®  
Providing Insurance and Financial Services

**Landscaping**

*Mountain's Edge Landscape  
Design and Construction*

Water-Wise Irrigation Installation    General Property Maintenance  
Landscape Design    Slope Erosion Control  
Irrigation Repair    Landscape Lighting  
Railroad Tie Construction    Ponds and Waterfalls  
Decks, Concrete, Flagstone, Rock    Water Tank Sales and Installation

*John & Denise Chicarelli*

Idyllwild's Husband-and-Wife Design-and-Build Landscape Team  
CA Contractor B & C-27 License #832195

**659-6300**

**Land Surveyor**

**Lee Arson Land Surveying**

PLS 8389

54585 N. Circle Dr.  
Suite C  
PO Box 539  
Idyllwild, CA 92549  
lee@idylarn.com  
www.idylarn.com



**951.659.4458**  
Phone/Fax

**Notary**

**Notary 24/7**

Full Service Notary Will Travel To You

Glen Ashcraft  
P.O. Box 1502  
25575 Fern Valley Rd.  
Idyllwild, CA 92549  
1-951-659-8981  
1-951-265-4139 cell

Need typesetting,  
photo scanning,  
e-mailing services,  
fax services, copying,  
menus, letterhead,  
envelopes, business  
cards and  
WHATNOT?  
Come to the Town  
Crier and talk to  
Sandy. 659-2145

**Painting**

Interior/Exterior/Residential  
Commercial/Sandblasting  
Pressure Washing/Trim  
Lacquer/Cabinets  
Stain/Decks  
and the rest  
**Painting**  
Owner, Jacob Teel  
Lic# 873664    **951.659.4001**

**Is Business Slow?**  
Speed it up with an ad in the  
Town Crier's Service Directory.  
Call Sandy (951) 659-2145

Get an online subscription to the Town Crier!  
You get to read the entire paper, lock, stock and  
barrel, in a very handy virtual version.  
(You know you want to.) \$29/yr.  
Call (951) 659-2145 for information.



**Painting**

**TOM BLOOM PAINTING**

License # 924896

- Residential
  - Commercial
- Free Estimates  
**951.492.8986**

Advertise in the Service Directory! 659-2145

**GREG'S QUALITY PAINTING**



- Sandblasting
- Painting • Staining
- Refinishing

SERVICING IDYLLWILD SINCE 1971

A Quality Job for a Reasonable Price  
**(951) 659-2549**

Lic. # 499346 Free Estimates

**Rain Gutters**



**Seamless Aluminum Rain Gutters**

1-800-395-7599  
**(951) 925-6615**

Brian Marshall  
Lic. # 733817



**Relief Maps**

**Relief Maps** of the Santa Ana Quadrangle



Available at the  
**Town Crier**  
54295 Village Center Dr.



A Coachella Valley homeless encampment, to which Chris Rockwell delivers food and other necessities weekly.

PHOTO BY CHRIS ROCKWELL

**Painting & Restoration**

**Forest Custom Painting**

- Durable Exteriors
- Custom Interiors
- Fine Wood Finishes
- Faux Finishes
- Cabinet Refinishing
- Wood Floor Refinishing
- Deck & Siding Restoration
- Log Home Exteriors

License # 813416 • HIC • Fully Insured

**Fernando Alvarez**  
fernando@desertpaint.com

FREE ESTIMATES



Off: **951-659-1012**  
Cell: **760-285-7651**  
Fax: **951-659-2270**

**Roofing**

**Idyllwild's Premier Roofing Company**

Residential • Re-Roof • Repair • Skylights

Serving Idyllwild Since 1984 • 25 Years Experience

**BC's Roofing Company**

Brian Citrowski, Owner **(951) 306-8888**

Worker's Comp & General Liability Insured • Lic. # 645462

**Septic Services**

**INLAND BACKHOE**

**(951) 659-5329**

Septic Systems —  
Installations & Repairs  
Backhoe & Dump Truck Services  
Serving Idyllwild 34 Years

Liability Insured  
Lic. # B C42-332570

DAVID A. JONES  
JUSTIN JONES

P.O. Box 551  
Idyllwild, CA 92549

**Pest Control**



**BUGS TO BEARS**  
WILDLIFE CONTROL OPERATOR & PEST CONTROL

Only Local Pest Control On The Hill With Full Service

4 Licenses, 2 Bonds, 3 Insurance Policies

Wildlife Operator #7897  
State Licensed Pest Control Company.

Cell: **(951) 795-6093**  
betterwildlifecontrol.info

To find out if a contractor's license is valid and current, call the California Contractors State License Board at **1-800-321-2752** or visit the Web site at [www.cslb.ca.gov](http://www.cslb.ca.gov)

**Plumbing**

**Chaney's Plumbing**

24 HOUR EMERGENCY SERVICE

**DRAIN SERVICE ~ LEAKS ~ REPIPES**  
**TANKLESS WATER HEATERS ~ REMODELS**  
**NEW CONSTRUCTION ~ VIDEO INSPECTIONS**  
DEPENDABLE & RELIABLE! ~ BONDED, LICENSED, INSURED

Credit Cards Accepted

OWNER: RICK CHANEY Lic. # 862139

Cell: **(951) 534-1006** ~ Home: **(951) 659-8111**



**Herk's Plumbing & Handyman Service**

34 years experience

- Plumbing repairs
- Water heaters
- Garbage disposals
- Remodels

— DEPENDABLE —  
**(951) 659-1151**  
(unlicensed)

**Get More Business!**

**ADVERTISE** in the **Town Crier's Service Directory.** Call **(951) 659-2145**

**Performance Pumping**



**Septic Tank Pumping**  
**1-866-860-6532**

Septic Certifications  
New Construction  
Leach Systems, Repair & Replacements  
Backhoe & Dumptruck  
Video Pipe Inspection & Repair

Fully Licensed and Bonded • C-42 License # 799834

Brad Hamby, Owner  
Cell (951) 830-3529  
bradhamby@gmail.com



**Kent Busher Excavating**

- Septic Systems
- Leach Line Repair
- Dump Truck & Backhoe Service
- Grading & Asphalt Paving

Lic. #432851

**659-3448**

Have a beautiful Idyllwild day!

**R U Online?**

Now more than ever, people look for goods and services on the internet. To get on the Town Crier's Web site, call Shane at **(951) 659-2145**

**Homeless**

Continued from page 21

received items donated by Rockwell have expressed their gratitude by writing letters for Rockwell to post on his organization's website, [www.helpingthehomelessnow.com](http://www.helpingthehomelessnow.com). Kim's letter, addressed to "Kind donors," reads: "Thanks to Chris and your kindness it's easier to get thru the day and tomorrow looks promising. Knowing someone cares makes all the difference."

Rockwell said he'd like to do more for the homeless. He said he'd like to see land donated so that a permanent encampment could be established for people without homes of their own. He envisions the people of the encampment providing their own security

and taking responsibility for the daily operations of the camp. He'd like to see transportation provided to get people to work, school, and medical or other appointments. He thinks such a place would provide a needed home base for the homeless to operate from and it would also help the surrounding community because homeless people wouldn't be living and sleeping in public places. He's attempting to gain support for his idea, and has a meeting scheduled with a member of County Supervisor John Benoit's office to discuss it.

For more information about Helping the Homeless Now, Rockwell can be reached via his website or by calling (760) 954-6131.

Beth Nottley can be reached at [beth@towncrier.com](mailto:beth@towncrier.com).

**Soboba**

Continued from page 16

basketball coach Jim Valvano. The foundation has raised more than \$90 million for cancer research teams in 38 states. Sunday was marked as Cancer Awareness Day at the Soboba Classic.

The Soboba Classic also features its Tickets For Charity program, which last year set a record for a new tournament on the Nationwide Tour when it raised more than \$77,000 for nearly 100 local charities. Soboba Classic tournament director Ed Winiecki expected that to increase this year. Local charities from Riverside and San Bernardino counties include youth soccer leagues, high school sports, and arts and music programs. These participating charities receive 100 percent of the ticket proceeds from weekly grounds tickets they encour-

age people to purchase. Thursday, the first round of the Soboba Classic, was designated U.S. Armed Forces Day. All members with military IDs got free entry tickets every day of the tournament. Friday was Health and Wellness Day, with a special center devoted to that important activity. Saturday was named College Day, and the tournament maintained a special stadium at the 15th tee for college students throughout the tournament. Students with college IDs got free entry tickets every day.

Start planning now to support local charities and enjoy a great week at next year's Soboba Classic. "Giving back to the community is a top priority for the Soboba Band of Luiseño Indians," Winiecki is quoted in this year's spectator guide. "It is the tribe's goal to truly help make a difference in the lives of others."



# CREATURE CORNER

BY MIMI AND HOOTCH

October is "Adopt a Shelter Dog" month.



**Nellie**, a young, female pit bull, was found wandering in Idyllwild when an angel rescued her. She has all the promise of being a loyal, protective and playful



addition to the right home. Nellie is looking for a home that will not be frightened by the fact she is a pit bull and that will be patient with her puppy curiosity. One throw of the tennis ball, and her smile will touch your heart.

**Maddie May** is our mastiff/golden mix looking for an energetic owner. Although very obedient, she will require a strong hand for the walk, as she is big and strong. A gentle heart and attention is all that is required in return for the lifetime of love this big, cuddly teddy bear is willing to give.



**Cole Trickle, Trophy and Leonardo** are the youngest of the ARF cattery. All young, male kittens, these guys will bring a lifetime of laughter and love to your home.



**Kitty** is our oldest ARF resident still searching for just the right home. Just back from the beauty parlor, she is ready for her favorite pillow and a few gentle pets.

**Rosi** is still in need of medical surgeries for injuries to her back legs. Her big smile, loving brown eyes, and Rosi dance will melt your heart. Please assist us in returning health to Rosi.



ARF has several cats and dogs available for adoption or fostering. Go to [www.idyllwildarf.org](http://www.idyllwildarf.org) and click on pet-finders. All pets are current on shots and are spayed or neutered.

ARF is open on Saturdays from 11 a.m. to 4 p.m. Call for appointment on any other day at (951) 659-1122. E-mail and donation opportunities are at [www.idyllwildarf.org](http://www.idyllwildarf.org) or e-mail [arf@greencafe.com](mailto:arf@greencafe.com).

*Creature corner is sponsored this week by Anonymous. To sponsor the column, call Shane Fender at the Town Crier, 659-2145.*

**ARF**  
Animal Rescue  
Friends of  
Idyllwild, CA

**ARF Vet Clinic**  
October 21, 2010  
Dr. Susan Eyer-Anderson  
Call Arf for Appointment  
**659-1122**

# PAST TENSE

## 60 years ago - 1950

The Fern Valley Lodge was selling "fine dinners" for only \$1 per meal.

## 55 years ago - 1955

Hemet Unified School District (HUSD) provided a bus to take Idyllwild students to football games in Hemet.

## 50 years ago - 1960

Although the Forest Service had not declared the Keen Camp guard station as excess, the possibility arose that the site might be used for a junior and senior high school.

## 45 years ago - 1965

At the conclusion of an 11-day training program conducted by the Spiritual Regeneration Movement Foundation held on the USC-Arts Foundation campus, teacher Lora Steere sculpted in clay a bust of spiritual leader Maharishi Mahesh Yogi.

## 40 years ago - 1970

Because of high fire danger, the U.S. Forest Service closed all national forests south of Lake Tahoe.



In this photo published Oct. 1987, Paramedic **Mike Mulhall** (now captain) outfits two youngsters with firefighting equipment as part of a hands-on demonstration during National Fire Prevention Week.

FILE PHOTO

## 35 years ago - 1975

The three local water boards — Fern Valley, Idyllwild, and Pine Cove — were on the verge of signing a joint-powers agreement. The formation of the authority would tackle problems common to all districts, such as the need for more water.

## 30 years ago - 1980

It was announced that no formal charges would be brought against the three boys who started the 28,655-acre Dry Falls Fire.

## 25 years ago - 1985

Lottery fever was high when news spread that Dee Ladd of Idyllwild had won

\$5,000 on a ticket she purchased at Village Market.

## 20 years ago - 1990

The Alandale Property Owner's Association (APOA) purchase the Alandale Water Company and formed the Alandale Mutual Water Company.

## 15 years ago - 1995

A Lake Hemet Dam Centennial Celebration was held at the Lake Hemet campground.

## 10 years ago - 2000


Some Village Lane stores were smeared with graffiti, along with other targets on North Circle Drive.

## 5 years ago - 2005

The fire danger level in the San Bernardino National Forest was raised from "High" to "Very High" because of Santa Ana winds.

## 1 year ago - 2009

The Riverside County Planning Commission stamped its approval on the proposed construction of a new cell tower in Mountain Center.




## IDYLLWILD DENTAL BUILDING

Serving the community's dental needs with gentle professionalism for over 20 years.

### 659-5011

After Hours  
Call 652-2744



Heber G. Dunn, D.D.S.

54805 North Circle Dr.

Bryan L. Dunn, D.D.S.

## FREE CALENDAR FOR NEW SUBSCRIBERS

**YES!** Sign me up for a subscription to the Town Crier today, and send me my **FREE 2011 IDYLLWILD SCENIC CALENDAR!**

### IN RIVERSIDE COUNTY

\$29 for 1 year — 25% off the newsstand price!

\$47 for 2 years — 39% off the newsstand price!

**\$63 for 3 years — 46% off the newsstand price!**

### OUT-OF-COUNTY

\$33 for 1 year — 15% off the newsstand price!

\$54 for 2 years — 30% off the newsstand price!

**\$73 for 3 years — 37% off the newsstand price!**

My Name \_\_\_\_\_

Phone \_\_\_\_\_

Address \_\_\_\_\_

City \_\_\_\_\_

State & Zip \_\_\_\_\_

Amount: \_\_\_\_\_  Check enclosed, *OR*

Charge My:  VISA  MasterCard  Discover

Expires \_\_\_\_\_

Card Number \_\_\_\_\_

Credit Card Security Code \_\_\_\_\_

Clip and mail to the Town Crier, P.O. Box 157, Idyllwild, CA 92549.  
Or call toll-free 1-888-535-6663 • Local (951) 659-2145





*Come One. Come All!*  
*Join our community as we celebrate the*  
**50th Anniversary of the  
Tree Lighting Ceremony!**  
**Sat., Nov. 27, 4:30 p.m.**

*Visits with Santa Claus and Mrs. Claus.*  
*Cookies to decorate ... and hot beverages to keep you warm!*

FREE booths are available for non-profit organizations to hawk your wares and sell your goods. Call Mimi Lamp at the Chamber of Commerce for more information: 659-3259.

**Best of all, a Sing-A-Long with the fabulous Idyllwild Christmas Choir and special guest performances. Plus, a reading of Clement Clark Moore's "The Night Before Christmas." And Much More!**

Our tree was planted 70 years ago by a youngster at the request of his mother, Eleanor Johnson. Yes, Jimmy Johnson planted this tree. And it has grown ... so much that we need to add many new lights. This year we plan to purchase 2,000 new LED lights. **WE NEED YOUR HELP.** A donation, no matter how large or small, will let you point to a light on the tree and say, "That's my light!" Checks can be made out to Greater Idyllwild Tree Lighting Committee, P.O. Box 1176, Idyllwild, CA 92549. Or donations can be made at BBVA Compass Bank.



**RAFFLE!**

This beautiful quilt will be raffled off to raise money to buy new lights for the old tree. You can see the quilt in the lobby of the BBVA Compass bank. Raffle tickets are available \$1 each or 6 for \$5.

## Liberal Steve Pougnet's record as Mayor of Palm Springs is appalling.



Paid for by the Mary Bono Mack Committee

Pougnet had the audacity to give himself a 65% pay raise, then slash the police department budget.

(Source: Palm Springs City Council minutes, 9/5/07; *Desert Sun*, 9/6/07)

**Things have gotten so bad, that the police department sent a letter stating that "public safety is in jeopardy."**

The letter also says:

**"our ability to aggressively go after the bad guys has been diminished** as a direct result of staffing cuts at the Police Department."

"The City does this while at the same time, spending millions on non-priority projects such as purchasing real estate and compensating City Hall administrators..."

(Source: Letter from the Palm Springs Police Officers Association, 9/20/10)

## Steve Pougnet failed as Mayor. We can't afford him in Washington.